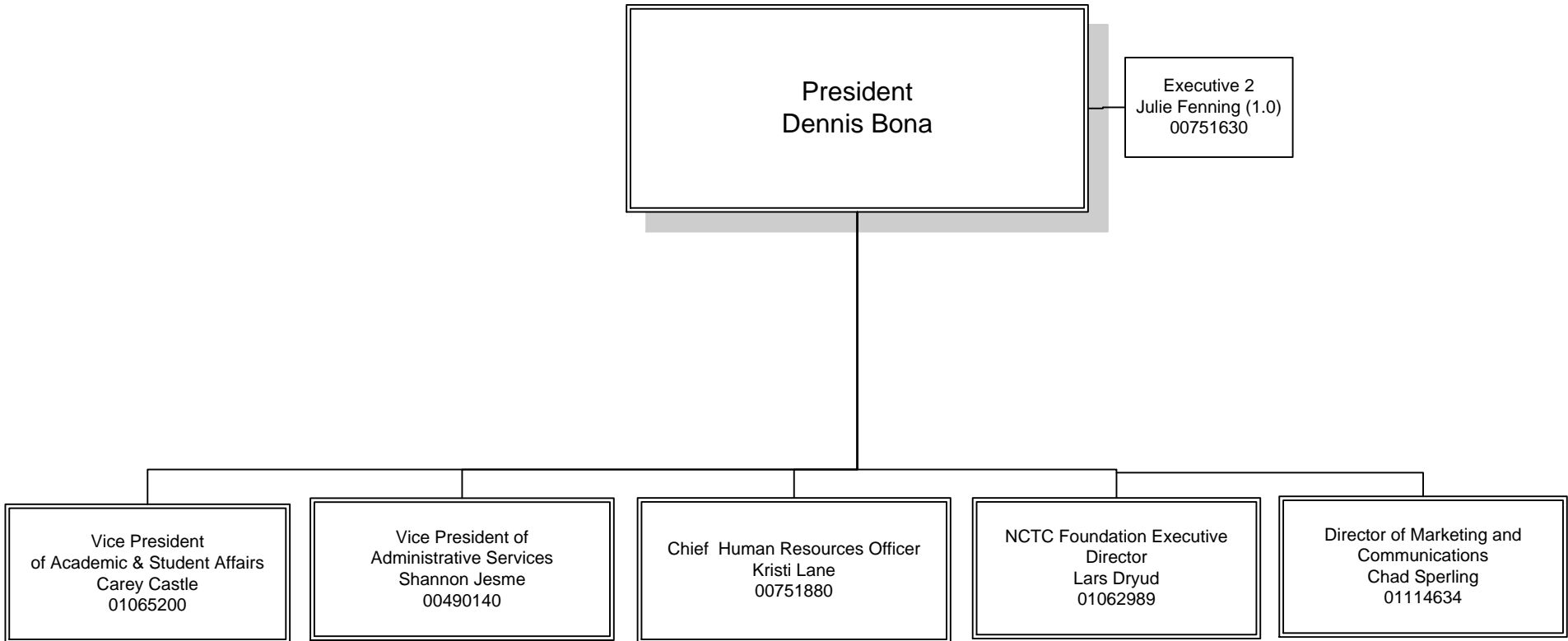


**Northland Community & Technical College  
Organizational Chart  
October 18, 2017**

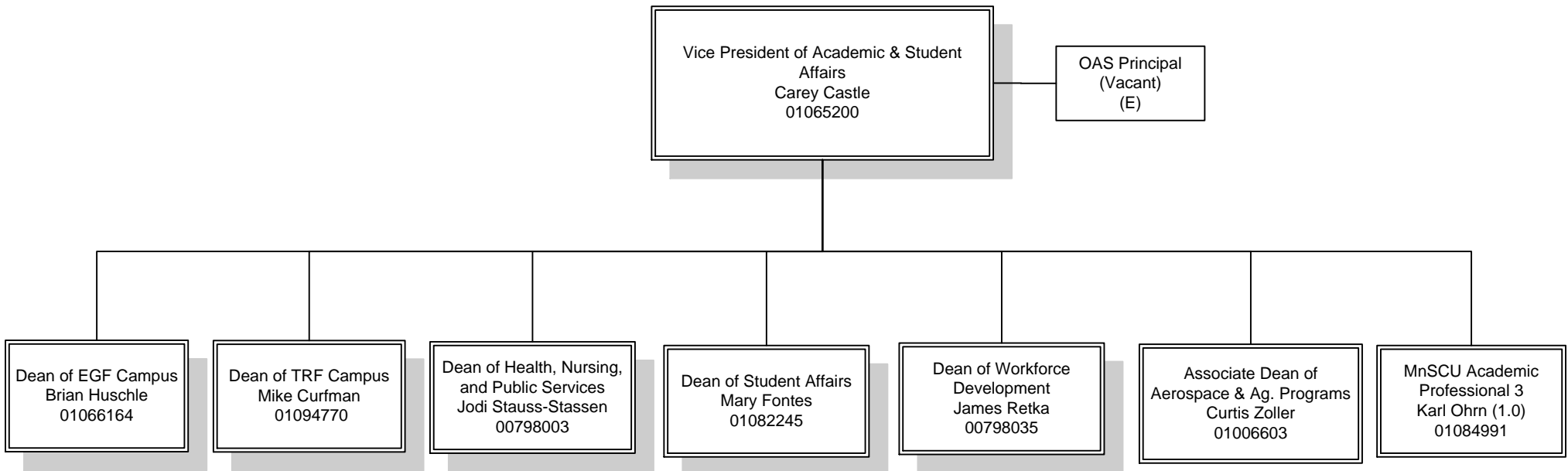


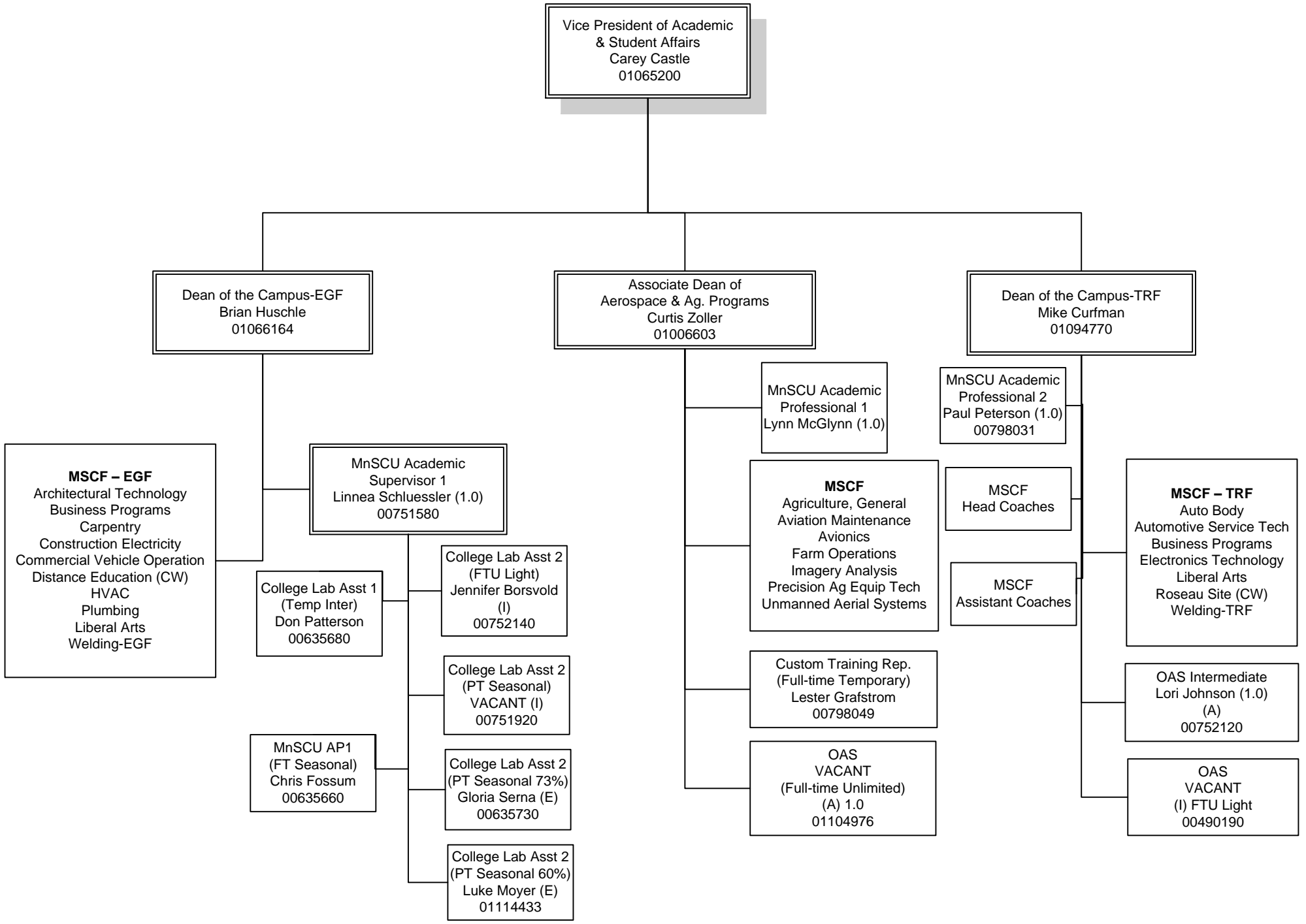
**College-Wide Chain of Command**

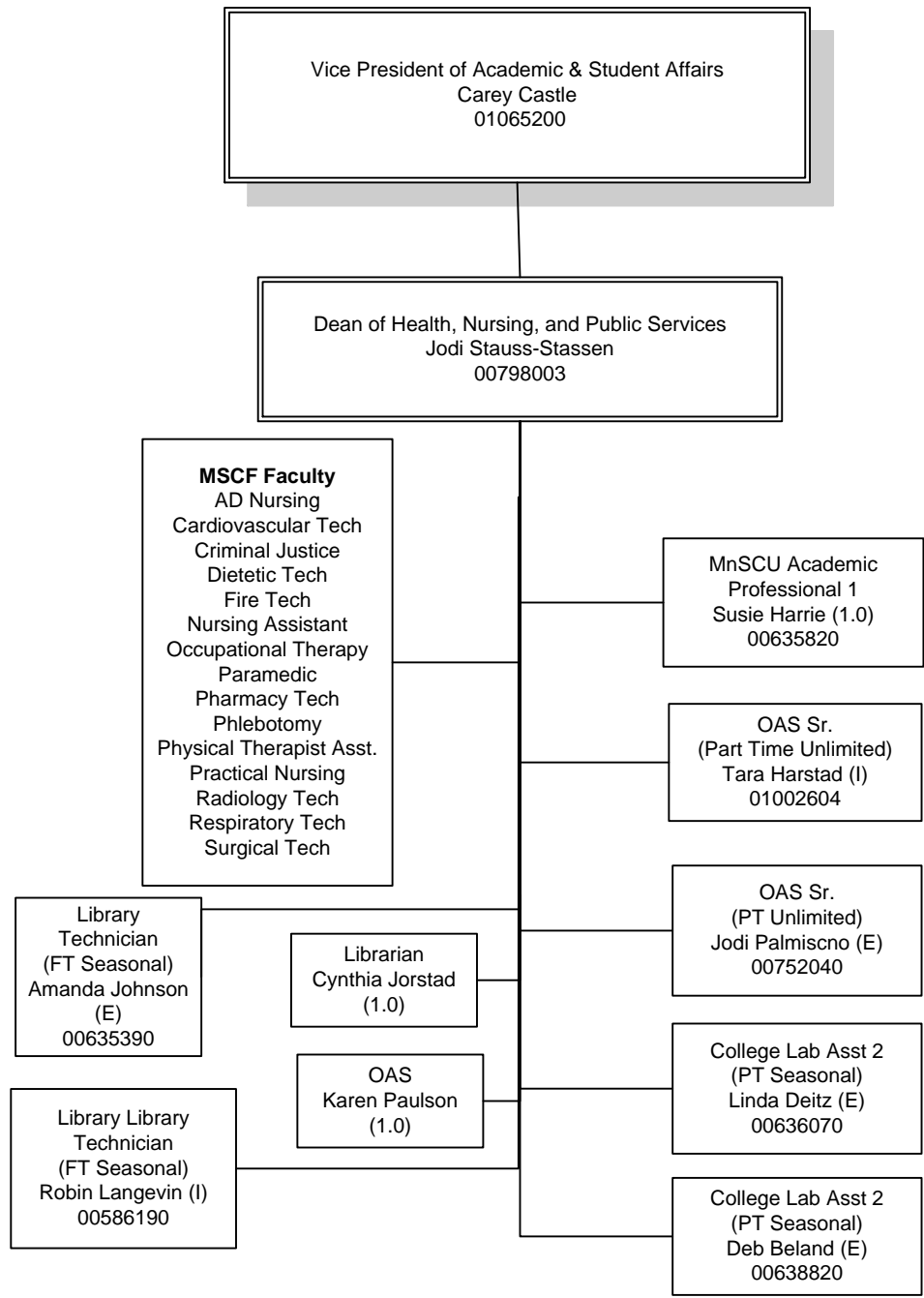
1. President
2. Vice President of Academic & Student Services
3. Vice President of Administrative Services
4. Director of Human Resources

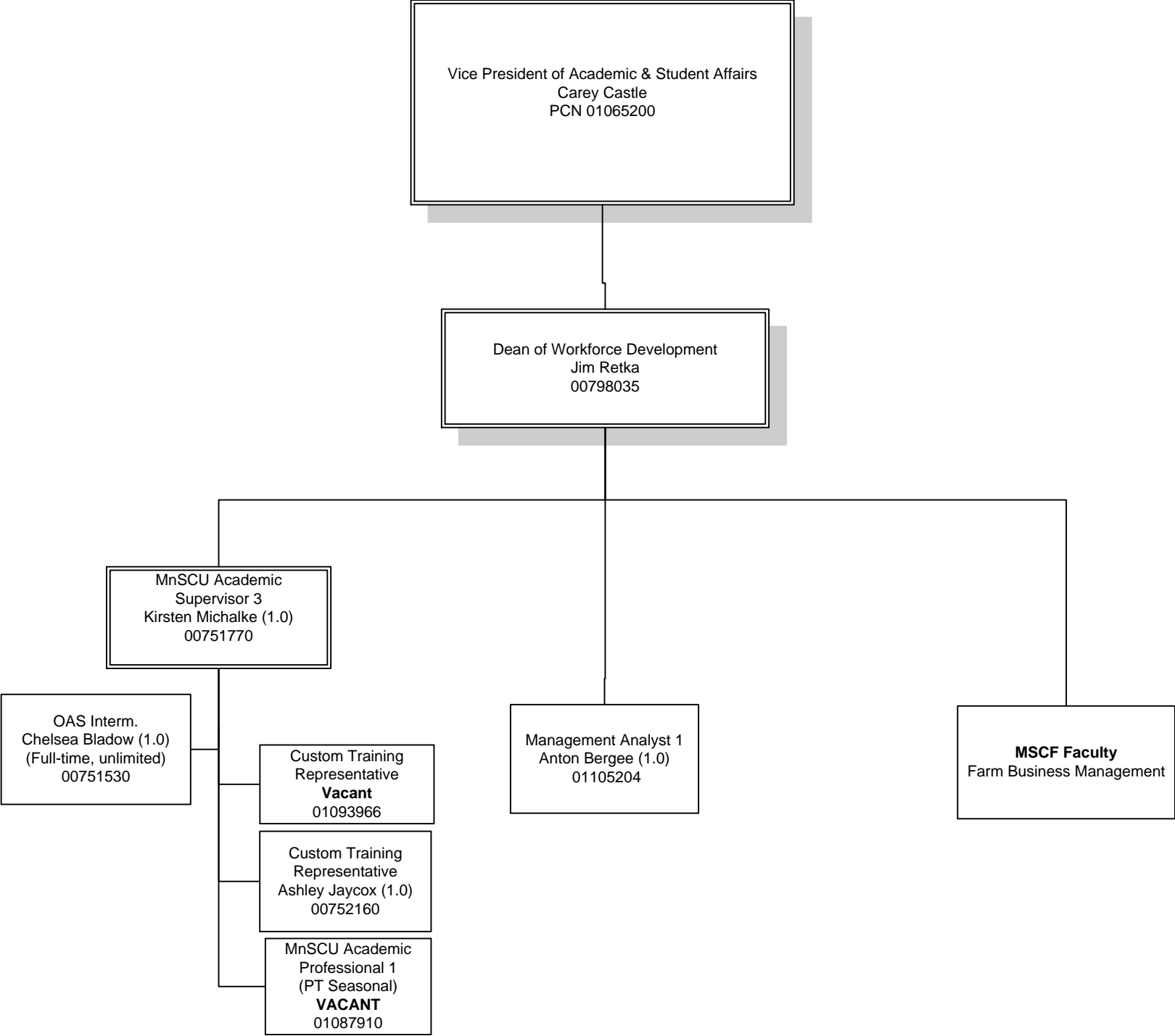
**AFSCME Work Areas**

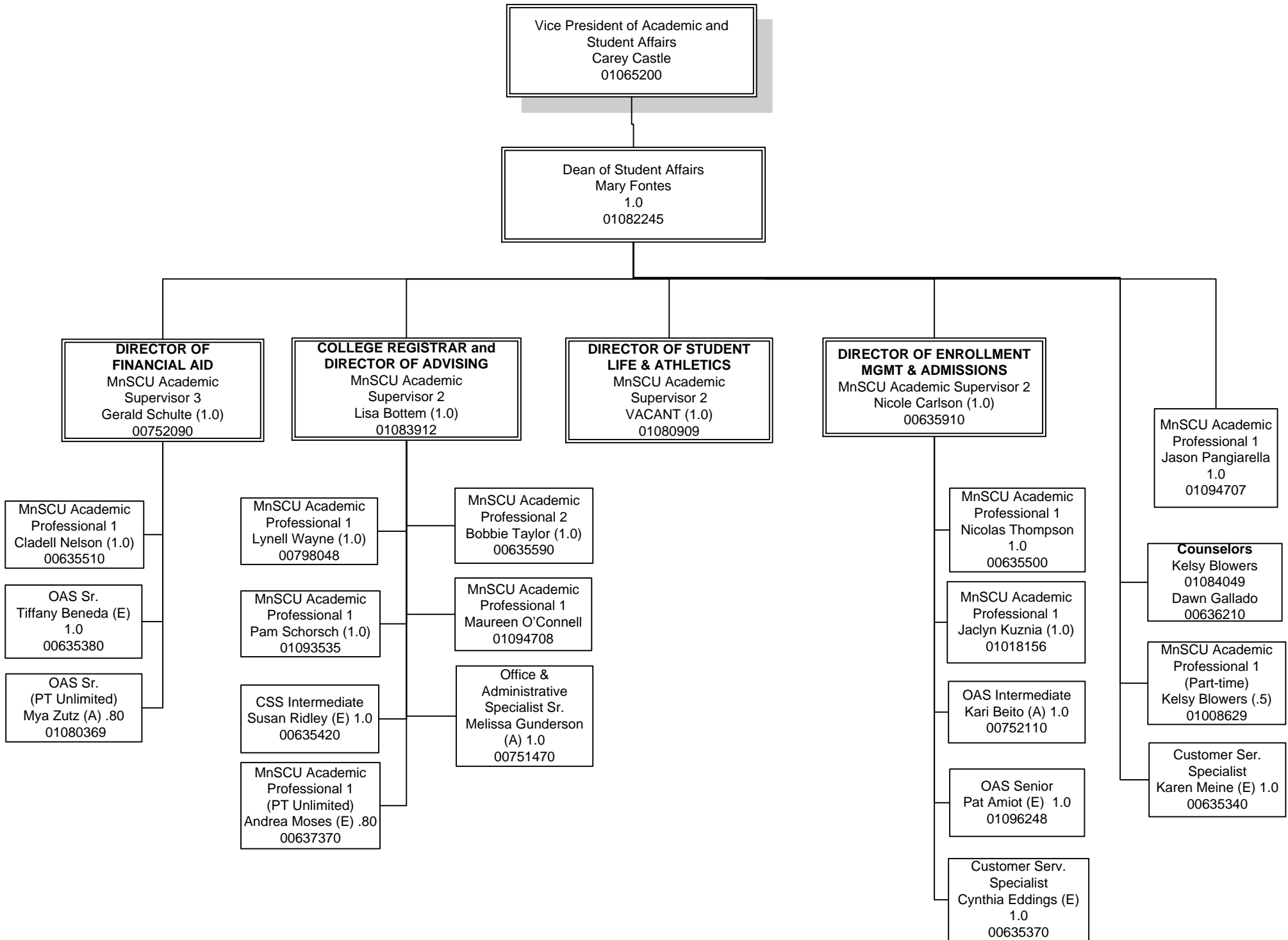
- E - East Grand Forks
- A - Administrative Support-TRF
- I - Instructional Support-TRF
- M - Maintenance-TRF











Vice President of Administrative Services  
Shannon Jesme  
00490140

