

**Northland Community & Technical College
Organizational Chart
July 21, 2021**

MinnState
Board of Trustees

Chancellor
Devinder Malhotra

President
Sandy Kiddoo
00751850

Executive 2 (217)
Julie Fenning
FT Unlimited
00751630

Interim Dean of Student
Affairs
Lisa Bottem
01128787

Vice President of
Administrative Services
Shannon Jesme
00490140

Director of Human
Resources
Mike Curfman
00751880

Provost
Brian Huschle
01066164

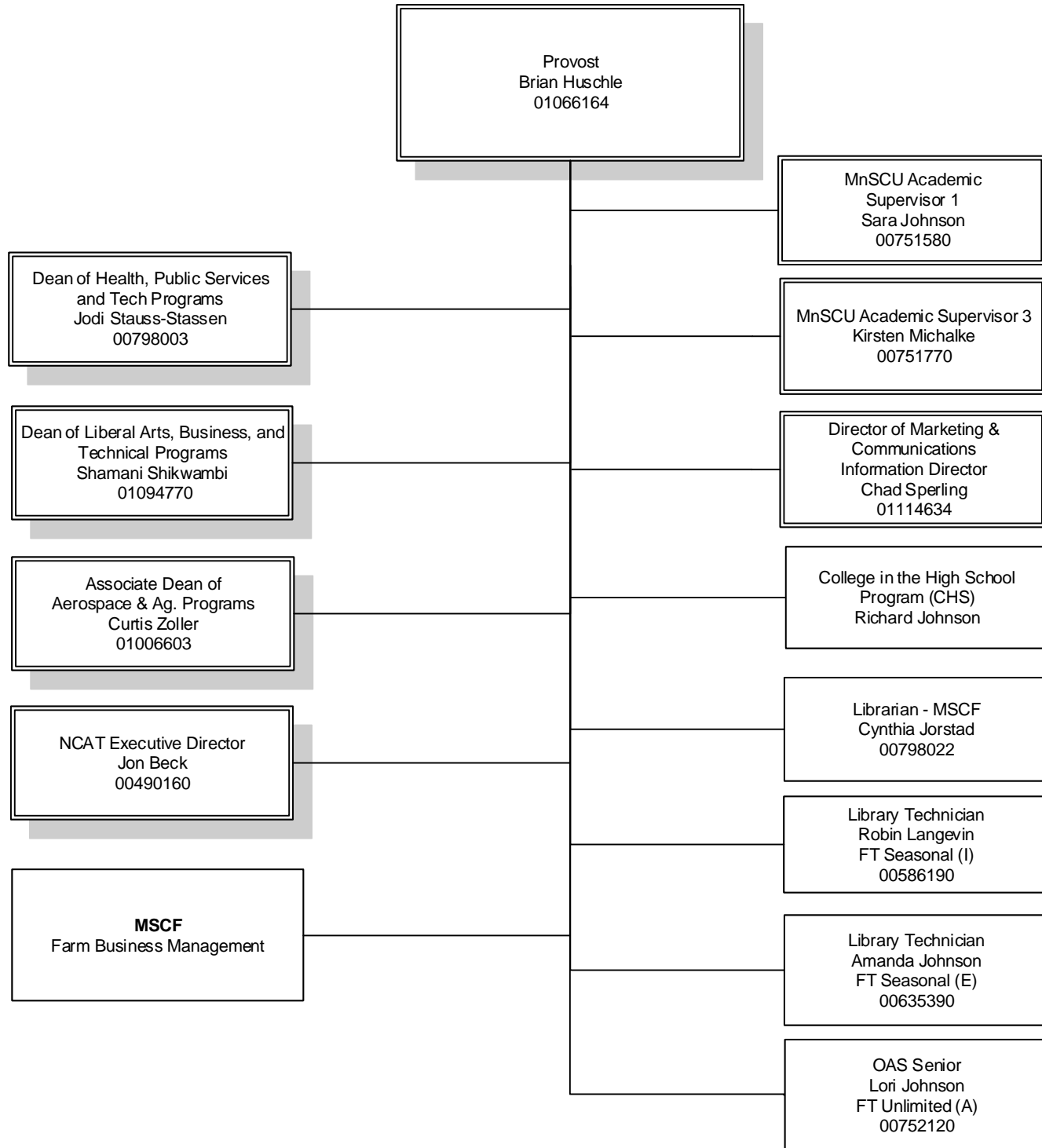
NCTC Foundation
Executive Director
Lars Dyrud
01062989

College-Wide Chain of Command

1. President
2. Vice President of Administrative Services
3. Provost

AFSCME Work Areas

E - East Grand Forks
A - Administrative Support-TRF
I - Instructional Support-TRF
M - Maintenance-TRF



Provost
Brian Huschle
01066164

NCAT Executive Director
Jon Beck
00490160

MnSCU Academic
Supervisor 1
Sara Johnson
00751580

Associate Dean of
Aerospace & Ag. Programs
Curtis Zoller
01006603

MnSCU Academic Professional 3
Anton Bergee
FT Unlimited
01104512

MnSCU Academic Professional 1
Chelsea Bladow
FT Unlimited
00798045

NCAT Co-PI
Zackary Nicklin (faculty)

OAS
Vacant
FT Unlimited (A)
01104976

MnSCU AP1
Chris Fossum
FT Seasonal
00635660

MnSCU AP1
Chris Fossum
Int. Unlimited
01084315

College Lab Asst 1
Diane Dahle
Int. Unlimited (E)
00635720

College Lab Asst 2
Jennifer Borsvold
FT Unlimited (I)
00752140

College Lab Asst 2
Ethan Peterson
PT Seasonal (I)
00751920

College Lab Asst 2
Cory Floden
PT Seasonal (E)
00635730

College Lab Asst 2
Vacant
PT Seasonal (E)
01114433

MSCF
Auto Body
Automotive Service Tech
Aviation Maintenance
Avionics
Imagery Analysis
Electronics Technology
Manufacturing
Unmanned Aerial Systems
Welding Technology (TRF)

MnSCU Academic
Professional 1
Lynn McGlynn
FT Unlimited
00751520

Provost
Brian Huschle
01066164

Dean of Liberal Arts,
Business, and Technical
Programs
Shamani Shikwambi
01094770

MSCF
Liberal Arts (collegewide)
Agriculture, General
Accounting
Administrative Asst.
Business
Computer Network Tech.
Early Childhood/EDUC
Farm Operations
HPER
Marketing & Management.

Provost
Brian Huschle
01066164

Dean of Health, Public Services and
Tech Programs
Jodi Stauss-Stassen
00798003

MSCF
Architectural Technology
Carpentry
Construction Electricity
Construction Plumbing
Criminal Justice
Dietetic Technician
Emergency Med Tech Basics
Fire Technology
Firefighter Paramedic
Health
HVAC
Medical Admin. Support
Nursing – AD (collegewide)
Nursing Assistant (collegewide)
Occupational Therapy Asst.
Paramedic
Pharmacy Technology
Phlebotomy
Physical Therapist Asst.
Practical Nursing (collegewide)
Radiology Technology
Respiratory Therapy
Surgical Technology
Welding Technology (EGF)

MnSCU Academic Exam Monitors
Int. Temporary

College Lab Asst 2
Christina Fontaine
PT Seasonal (E)
00638820

OAS Sr.
Jodi Palmiscno
PT Unlimited (E)
00752040

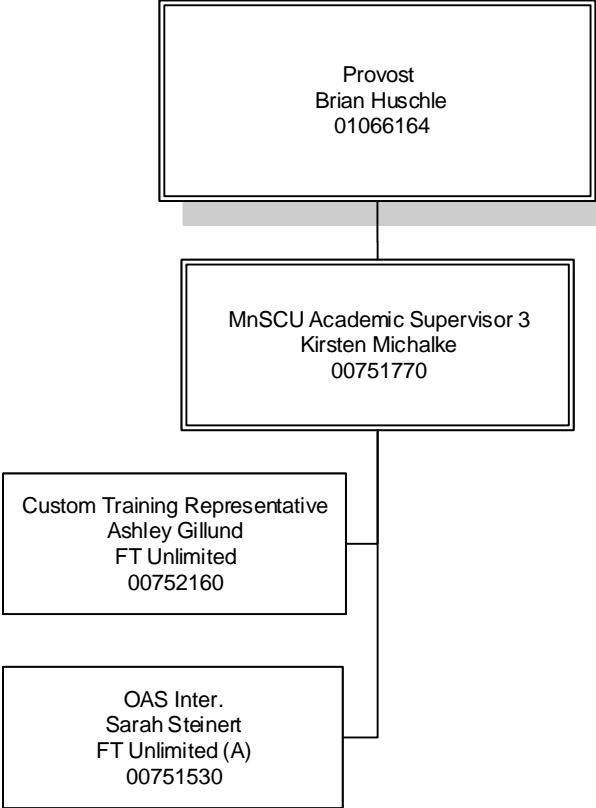
College Lab Asst 2
Linda Deitz
PT Seasonal (E)
00636070

Provost
Brian Huschle
01066164

MnSCU Academic Supervisor 3
Kirsten Michalke
00751770

Custom Training Representative
Ashley Gillund
FT Unlimited
00752160

OAS Inter.
Sarah Steinert
FT Unlimited (A)
00751530



Interim Dean of Student Affairs
Lisa Bottem
01128787

Director of
Financial Aid
Lisa Bottem
01128787
LOA 00752090

College Registrar and
Director of Advising
MnSCU Academic
Supervisor 2
Benjamin Hoffman
01083912

Director of Enrollment Mgmt &
Admissions
MnSCU Academic Supervisor 2
Nicole Carlson
00635910

MnSCU Academic
Professional 1
Jason Pangiarella
FT Unlimited
01094707

MnSCU Academic
Professional 1
Cladell Nelson
FT Unlimited
00635510

MnSCU Academic
Professional 2
Lynell Wayne
FT Unlimited
00798048

MnSCU Academic
Professional 1
Lindsay Kuntz
FT Unlimited
01094708

MnSCU Academic
Professional 1
Nicolas Thompson
FT Unlimited
00635500

MnSCU Academic
Professional 1
Maura Nelson
FT Unlimited
01018156

MSCF Counselors
Kelsy Blowers
01084049
Shelley Cervantes
00636210

MnSCU Academic
Professional 1
Heather Nelson
FT Unlimited
00635380

MnSCU Academic
Professional 1
Tiffany Beneda
FT Unlimited
01093535

MnSCU Academic
Professional 1
Lisa Gunderson
FT Unlimited
01124135

OAS Senior
Sarah Glimsdahl
FT Unlimited (E)
01096248

OAS Intermediate
Kari Beito
FT Unlimited (A)
00752110

MnSCU Academic
Professional 1
Kelsy Blowers
PT Seasonal
01008629

OAS Sr.
Tiffanie Bieganeck
PT Unlimited (A)
01080369
LOA

CSS Intermediate
Susan Ridley
FT Unlimited (E)
00635420

MnSCU Academic
Professional 1
Andrea Moses
PT Unlimited
01081585

Customer Serv.
Specialist
Amanda Stebleton
FT Unlimited (E)
00635370

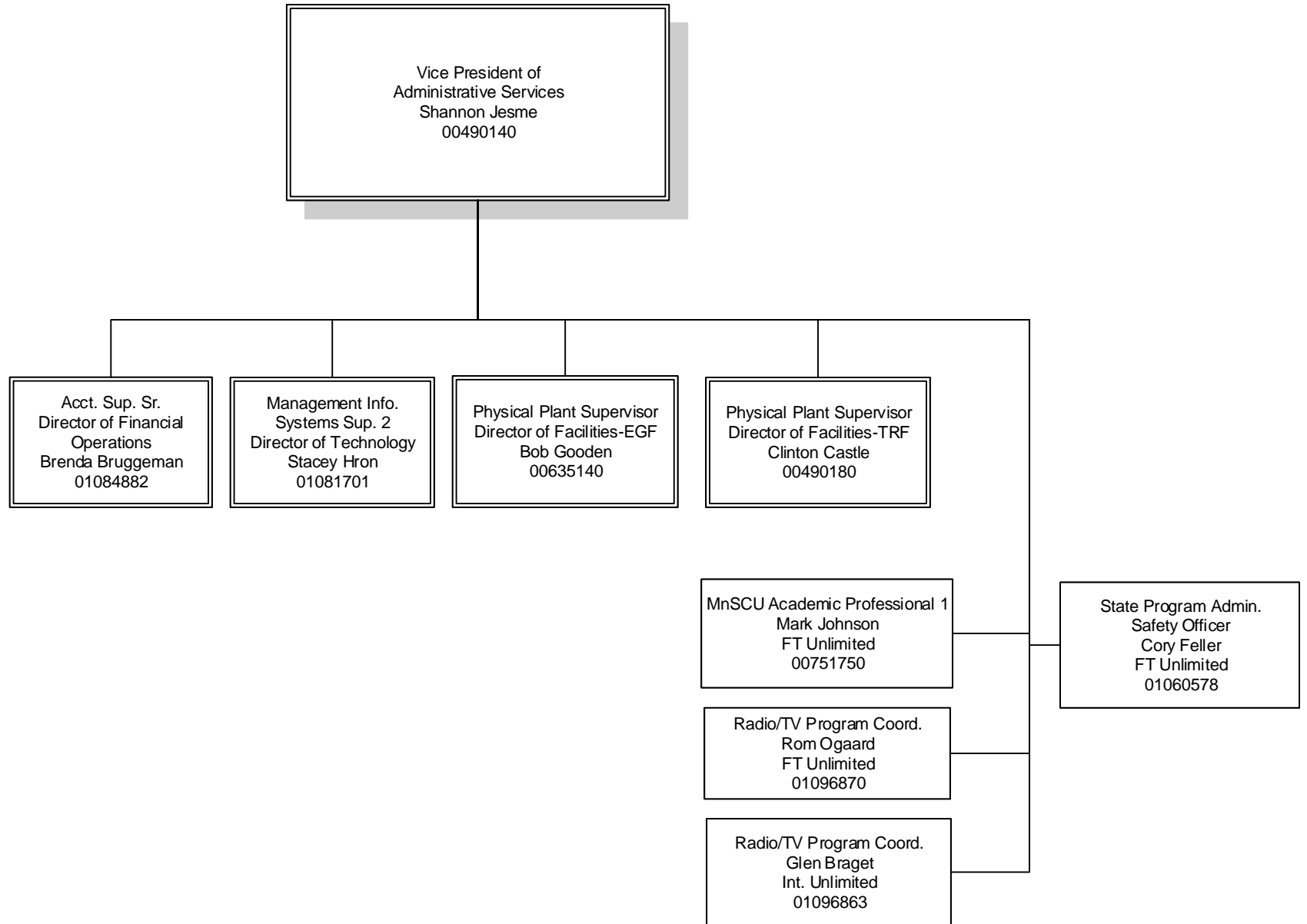
Customer Ser.
Specialist
Karen Meine
FT Unlimited (E)
00635340

MSCF
Head & Assistant
Coaches
Athletic Coordinator

MnSCU Academic
Professional 1
Tiffanie Bieganeck
FT Limited
01128797

OAS Sr.
Tara Harstad
PT Unlimited (I)
01002604

MnSCU Academic
Professional 1
Susie Harrie
FT Unlimited
00635820



Vice President of
Administrative Services
Shannon Jesme
00490140

Director of Financial
Operations
Acct. Sup. Sr.
Brenda Bruggeman
01084882

Account Clerk Sr.
Sierra Anderson
FT Unlimited (A)
00751410

Account Clerk
Colleen Kukowski
FT Unlimited (E)
00635360

Cook Coordinator
Ladora Dahlen
FT Seasonal (A)
01121560

Account Clerk Sr.
Yvette Schneider
FT Unlimited (E)
00636080

Food Service Worker
Raelene Berg
Int. Unlimited (A)
00635180

Buyer 1
Angela Menge
FT Unlimited
00636040

Food Service Worker
Beth Lundeen
Int. Unlimited (A)
00636130

Accounting Officer Int.
Vacant
FT Unlimited
00490150

OAS
Alicia Dick
PT Unlimited (A)
01104382

Accounting Officer Int.
Trisha Kalvoda
FT Temp
01127634

Vice President of
Administrative Services
Shannon Jesme
00490140

Director of Technology
MIS Supervisor 2
Stacey Hron
01081701

ITS 1
Holly Deschene
FT Unlimited TRF
01061921

ITS 2
Zach Bladow
FT Unlimited TRF
01062352

ITS 1
Brad "Bubba" Rockstad
FT Unlimited EGF
01083462

ITS 2
Karleen Delome
FT Unlimited EGF
00635320

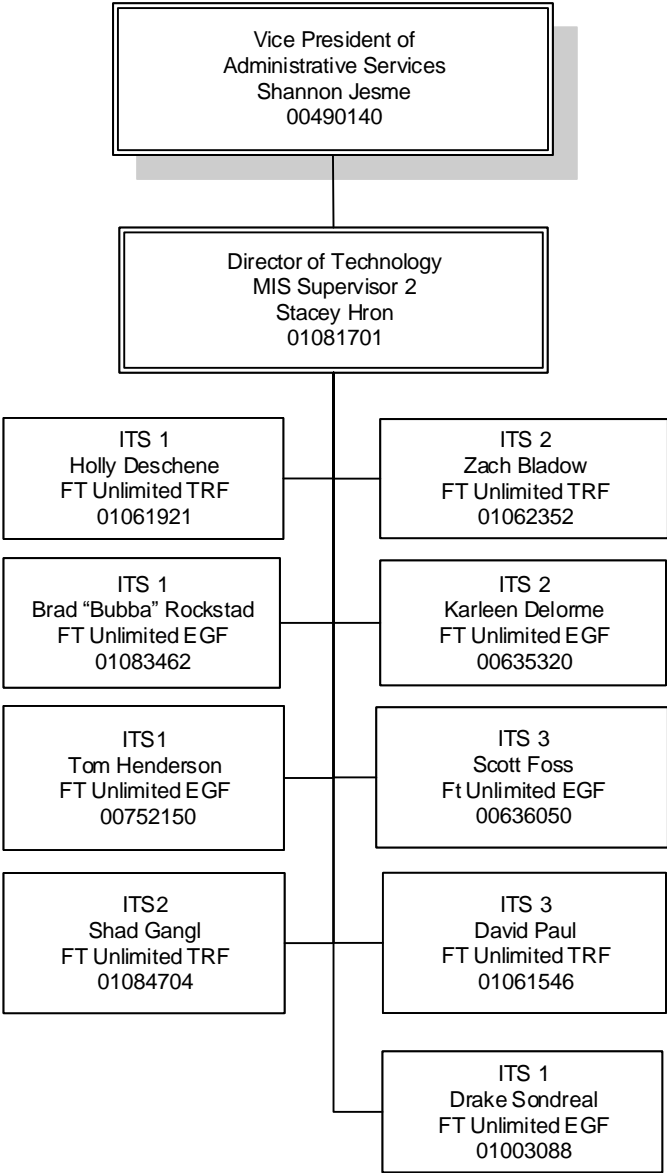
ITS1
Tom Henderson
FT Unlimited EGF
00752150

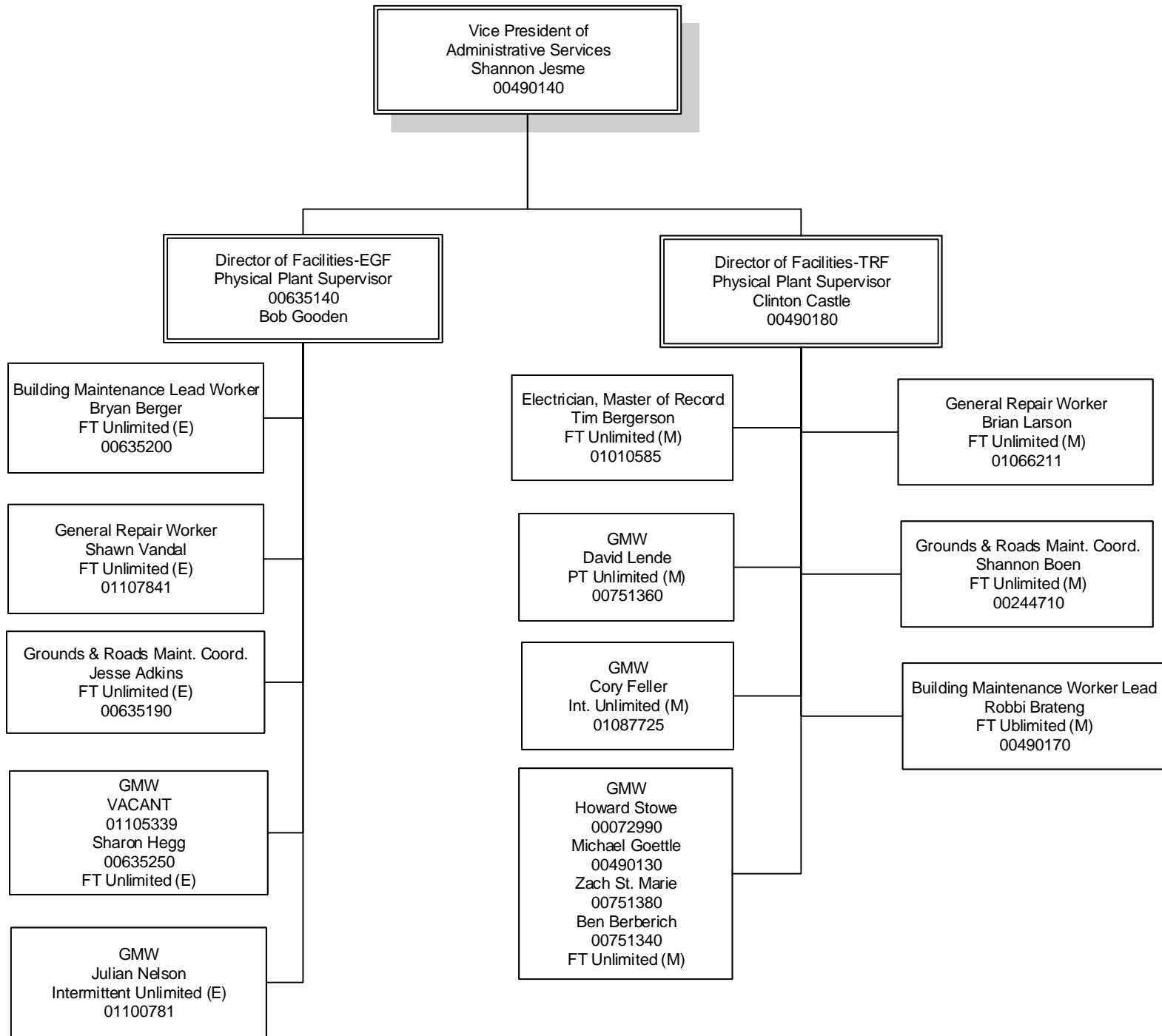
ITS 3
Scott Foss
Ft Unlimited EGF
00636050

ITS2
Shad Gangl
FT Unlimited TRF
01084704

ITS 3
David Paul
FT Unlimited TRF
01061546

ITS 1
Drake Sondreal
FT Unlimited EGF
01003088

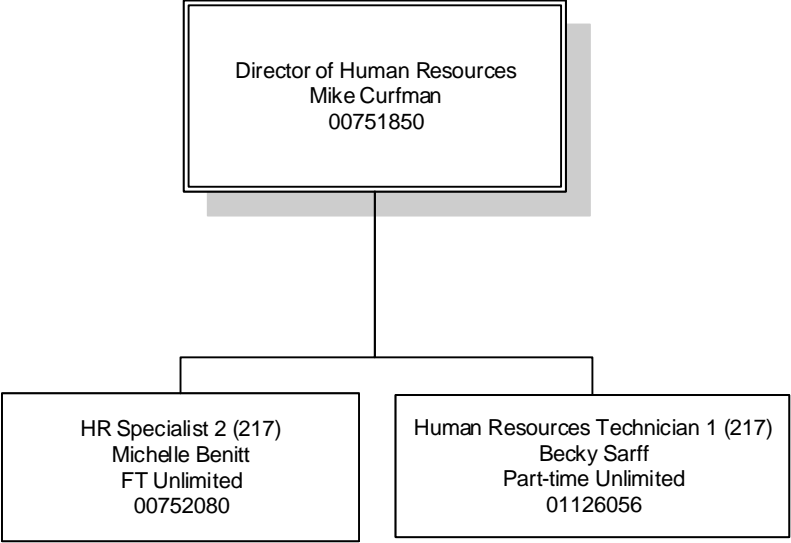




Director of Human Resources
Mike Curfman
00751850

HR Specialist 2 (217)
Michelle Benitt
FT Unlimited
00752080

Human Resources Technician 1 (217)
Becky Sarff
Part-time Unlimited
01126056

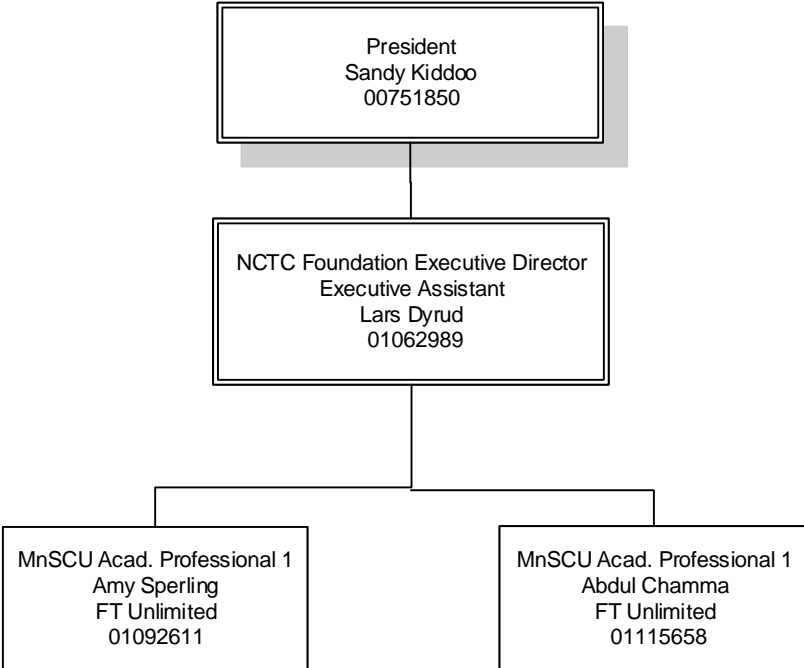


President
Sandy Kiddoo
00751850

NCTC Foundation Executive Director
Executive Assistant
Lars Dyrud
01062989

MnSCU Acad. Professional 1
Amy Sperling
FT Unlimited
01092611

MnSCU Acad. Professional 1
Abdul Chamma
FT Unlimited
01115658



Provost
Brian Huschle
01066164

Director of Marketing &
Communications
Information Director
Chad Sperling
01114634

Information Officer 1
Kelly Jordet
FT Unlimited
01104204

