



NORTHLAND
COMMUNITY & TECHNICAL COLLEGE

Fact Book

Thief River Falls ♦ East Grand Forks

Compiled: April 2014

**Prepared by: Northeast Higher Education District
Office of Institutional Research**

Tracey Roy, Director
1851 East Highway 169
Grand Rapids, MN 55744
(218) 322-2408
tracey.roy@itascacc.edu

and

Billie Sikkila
1001 West Chestnut Street
Virginia, MN 55792
(218) 471-0011
b.sikkila@mesabirange.edu



NORTHLAND

COMMUNITY & TECHNICAL COLLEGE

East Grand Forks Campus
2022 Central Avenue NE
East Grand Forks, MN 56721
Phone: 1.800.451.3441

Thief River Falls Campus
1101 Highway One East
Thief River Falls, MN 56701
Phone: 1.800.959.6282

www.northlandcollege.edu

Fact Book

The Northland Community & Technical College Fact Book provides general statistical and descriptive information about the college which may be useful to those engaged in planning, assessment, preparing reports, writing grant proposals or other endeavors within the college. The Fact Book is a reference tool that provides a picture of Northland for fiscal year 2014 by using fall 2013 data, along with historical trend data. While not all available data has been gathered, the data accurately represents the major areas of the college.

Data may differ from other college and state reports. Such variances result from source of information used, the date on which the report was generated or the reporting period included in the data. Trends should be tracked using identical data sources over time.

Data reflects student enrollment by either full-year equivalent (FYE), full-time equivalent (FTE), or headcount:

Student Full-Year Equivalent

A full-time enrollment equivalent for a year – total credits taken by all students over the academic year divided by 30 (the number of credits considered to be a full-time course load over the duration of the year).

Student Full-Time Equivalent

Student full-time equivalent for a semester – total credits taken during the semester for all students divided by 15.

Headcount

For this purpose, the headcount is the actual number of students enrolled at the 30th day of Fall Semester.

Northland Community & Technical College Mission and Vision

MISSION

Northland Community & Technical College is dedicated to creating a quality learning environment for all learners through partnership with students, communities, businesses, and other educational institutions.

VISION

Northland Community & Technical College will be widely recognized as a progressive leader in community and technical college education, responsive to the needs of our learners through the use of partnerships, innovation, and technology.

INSTITUTIONAL LEARNER OUTCOMES

1. **Communication Skills.** Students will be able to **communicate** effectively with a variety of audiences using verbal, non-verbal, listening, writing, interpersonal, and team skills.
2. **Critical Thinking Skills.** Students will be able to **separate** fact and opinion, recognize distinct points of view, and **analyze** and evaluate information, including mathematical information. Students will be able to **acknowledge** diverse values, and **employ** creativity and effective problem-solving skills in a variety of situations. Students will be able to **understand** implications and consequences of decision-making.
3. **Global and Civic Responsibility.** Students will be able to **interact** in ways that exhibit a sense of community and be sensitive to issues of cultural and global diversity, and understand the importance of exercising civic responsibility on local, regional, and national levels. Students will **understand** and **respect** the need to give service to others. Students will **respect** and **care** for our natural environment.
4. **Information and Applied Technology.** Students will be able to **access** and **analyze** appropriate information and/or resources using technology to solve problems.
5. **Personal Development.** Students will **develop** professional attitudes and habits of punctuality, honesty, respect, accountability, leadership, professional and personal integrity, and self-directedness while contributing to personal and group goals.

Accreditation

Northland Community and Technical College has maintained accreditation by the Higher Learning Commission of the North Central Association (www.ncahlc.org) since 1976.

Source: http://www.ncahlc.org/component/com_directory/Action,ShowBasic/Itemid,/instid,1794

Northland Community and Technical College Fact Book

TABLE OF CONTENTS

At-A-Glance Summary.....	1
Enrollment Trends.....	2-4
Fiscal Year Headcounts (Table 1)	2
Historic & Projected Enrollment Trends (Table 2)	2
Headcount and FTE - 10 th Day - Fall Terms (Table 3)	3
Headcount and FTE - 30 th Day - Fall Terms (Table 4)	3
Full-time/Part-time - 30 th Day - Fall Terms (Table 5)	3
Average Credit Load by Term (Table 6)	4
Enrollment Trends (Chart 5)	4
Student Demographic and Academic Profile	5-12
Gender Distribution (Table 7)	5
Age Groups (Table 8)	5
Gender by Age Group – Fall 2013 (Table 9)	5
Traditional vs. Non-Traditional Age Students (Table 10)	6
Average Age (Table 11)	6
Race/Ethnicity (Table 12)	7
Ethnicity of New Students (Table 13)	7
Student Level (Table 14)	8
New Students (Table 15).....	8
New Students by Admission Status (Table 16)	9
New/Return Students by Full-/Part-time Status - Fall 2013 (Table 17)	9
County of Residence (Table 18)	10
High School Attended of New Students (Table 19)	11
Financial Aid Comparison (Table 20)	12
Students Receiving Financial Aid (Table 21)	12
Academic Progress and Degrees Earned	13-24
Discipline Summary by FYE – 5 Year Comparison (Table 22).....	13
Fall Majors Headcount by CIP Code – 5 Year Comparison (Table 23)	16
Fall Majors FYE by CIP Code – 5 Year Comparison (Table 24)	18
On-line Enrollment (Table 25)	19
Fall to Following Fall Retention – New, Full-time Students (Chart 14).....	20
Fall to Spring Retention – New, Full-time Students (Chart 15).....	20
Enrollment by Program (Table 26).....	21
Degrees Awarded by Fiscal Year (Table 27).....	21
Persistence and Completion Rates for Fall 2009 Cohort (Table 28)	22
Persistence and Completion Rates for Fall 2010 Cohort (Table 29)	23
IPEDS 3-Year Graduation & Transfer-out Rates (Table 30).....	24

Faculty and Staff	25
FY 2013 Employee Characteristics (Table 31)	25
Ethnic Status (Table 32)	25
Full-time/Part-time Status by Employee Unit (Table 33).....	25
Regional Population and Employment	26-29
Population Estimates for Region 1 2008-2013 (Table 34)	26
Projected 30-Year Population Change (Table 35).....	27
Polk County Population Projections by Age Group (Chart 20)	27
Pennington County Population Projections by Age Group (Chart 21).....	27
High School Enrollment for Area Districts (Table 36)	28
2012-2013 Enrollment for Area School Districts (K-12) (Table 37).....	28
Average Unemployment Rate (Table 38).....	29
CCSSE/SENSE Benchmark Summary for NCTC	30

At a Glance

Northland Community & Technical College

5-Year Comparison - Fall 30th Day Enrollment

	Fall 09	Fall 13
Headcount	4,145	3,754
FTE	2,719.8	2,452.5
New Students	39%	38%
Gender		
Female	57%	56%
Male	43%	43%
Student Load		
Full-time	51%	46%
Part-time	49%	54%
Average Credit Load		
Full-time	14.3	14.4
Part-time	5.5	5.9
All Students	9.8	9.8
Admission Category		
High School	8%	12%
Undergraduate Regular	44%	37%
Undergraduate Transfer	37%	38%
Undergraduate Other	12%	13%
Average Age		
Full-time	23.4	23.1
Part-time	28.9	28.0
All Students	26.2	25.8
Underrepresented	55%	51%
Students of Color	14%	15%
Pell Eligible	40%	39%
First Generation Minnesota	24%	20%
First Generation Federal (TRIO)	64%	60%

Source: MnSCU ISRS Operational Data; Fall 30th Day Enrollment, unknowns are included in the denominator
 Definitions: FTE - full time equivalent per semester (total credits/15); full time student = 12 or more credits; Pell Eligible - receipt of or eligibility for federal need-based grant; First Generation Minnesota - neither parent received postsecondary education; First Generation Federal - neither parent has bachelor's degree, Student of Color - all racial-ethnic categories excluding White, Nonresident Alien and unknown status; Underrepresented Students - ONE or more attributes: student of color, Pell eligible, or first generation Minnesota.

This page intentionally left blank.

Enrollment Trends

Table 1
Fiscal Year Headcounts 2004 to 2013

	FY 2004	FY 2005	FY 2006	FY 2007	FY 2008	FY 2009	FY 2010	FY2011	FY2012	FY2013
Summer I	400	1,069	1,037	1,097	1,055	1,120	1,204	1,182	1,025	882
Fall	2,235	3,767	3,956	4,373	5,156	5,380	5,752	5,668	5,360	5,497
Spring	2,136	4,056	4,430	4,466	5,219	5,352	5,703	5,429	5,187	5,268
FY Duplicated HC	4,771	8,892	9,423	9,936	11,430	11,852	12,659	12,279	11,572	11,647
FY Unduplicated HC	2,717	4,709	5,011	5,572	5,540	5,601	5,822	5,485	5,328	5,411

Source: MnSCU ISRS Operational Data/ITS Management Reports/Enrollment/FYE by Campus

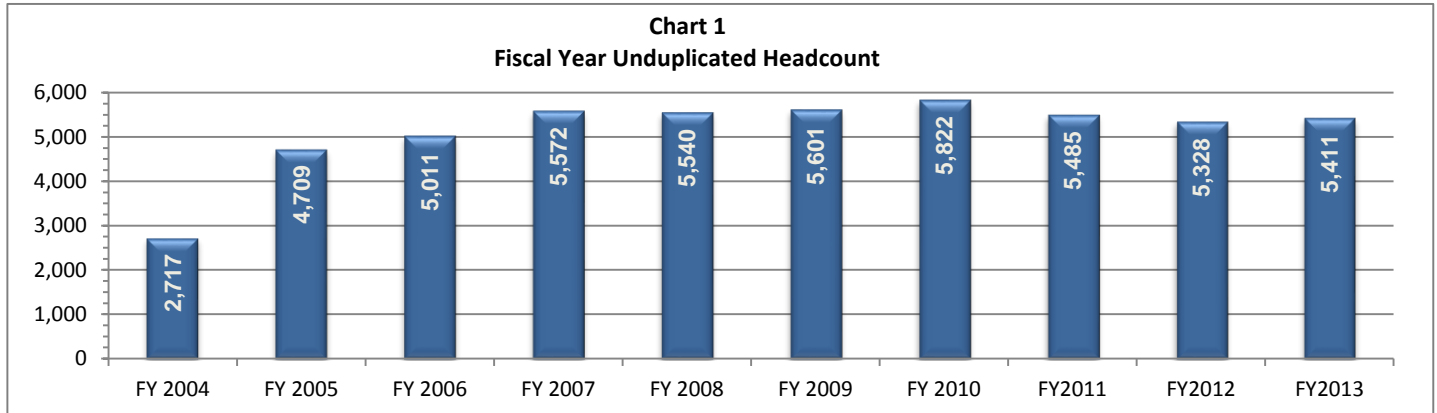


Table 2
Historic & Projected Enrollment Trends

	Actual FY2006	Actual FY2007	Actual FY2008	Actual FY2009	Actual FY2010	Actual FY2011	Actual FY2012	Actual FY2013	Projected FY2014	Projected FY2015	Projected FY2016
Northland	2,744	2,850	2,814	2,788	2,938	2,828	2,659	2,717	2,550	2,500	2,500

Source: MnSCU Finance Division as of October 2013

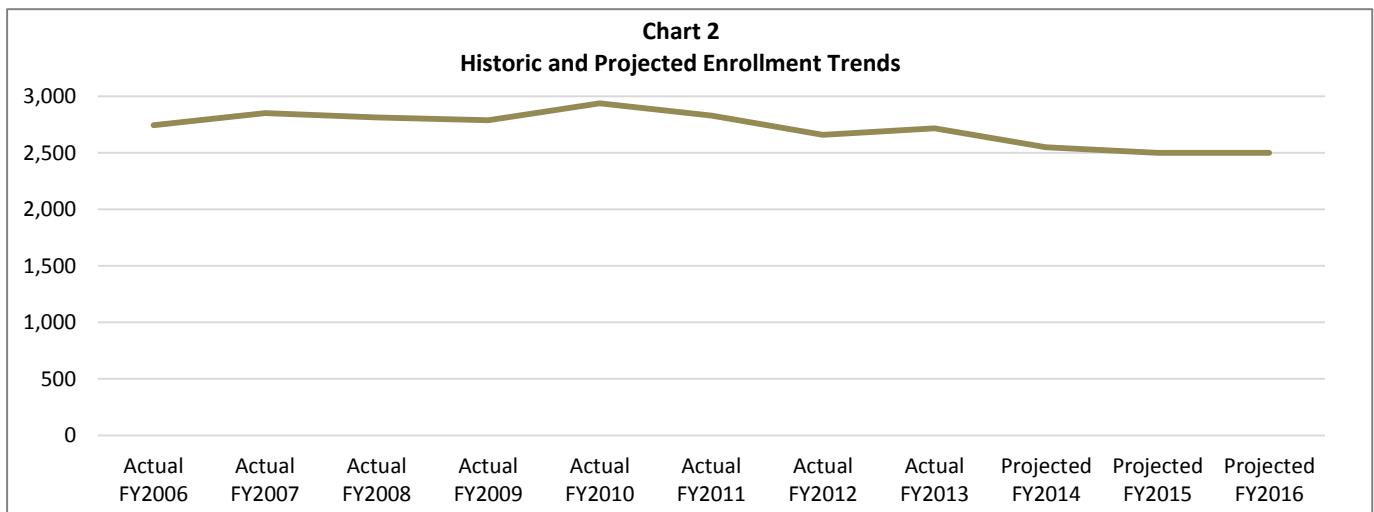


Table 3
Headcount and FTE - 10th Day - Fall Terms

	Fall 09	Fall 10	Fall 11	Fall 12	Fall 13
Headcount	3915	3860	3761	3835	3619
FTE	2639	2600	2463	2546	2416

Source: 10th Day Enrollment Tables, ST_03/MnSCU ISRS Operational Data

Table 4
Headcount and FTE - 30th Day - Fall Terms

	Fall 09	Fall 10	Fall 11	Fall 12	Fall 13
Headcount	4145	4023	3912	3999	3754
FTE	2720	2644	2505	2593	2453

Source: 30th Day Enrollment Tables, ST_03/MnSCU ISRS Operational Data

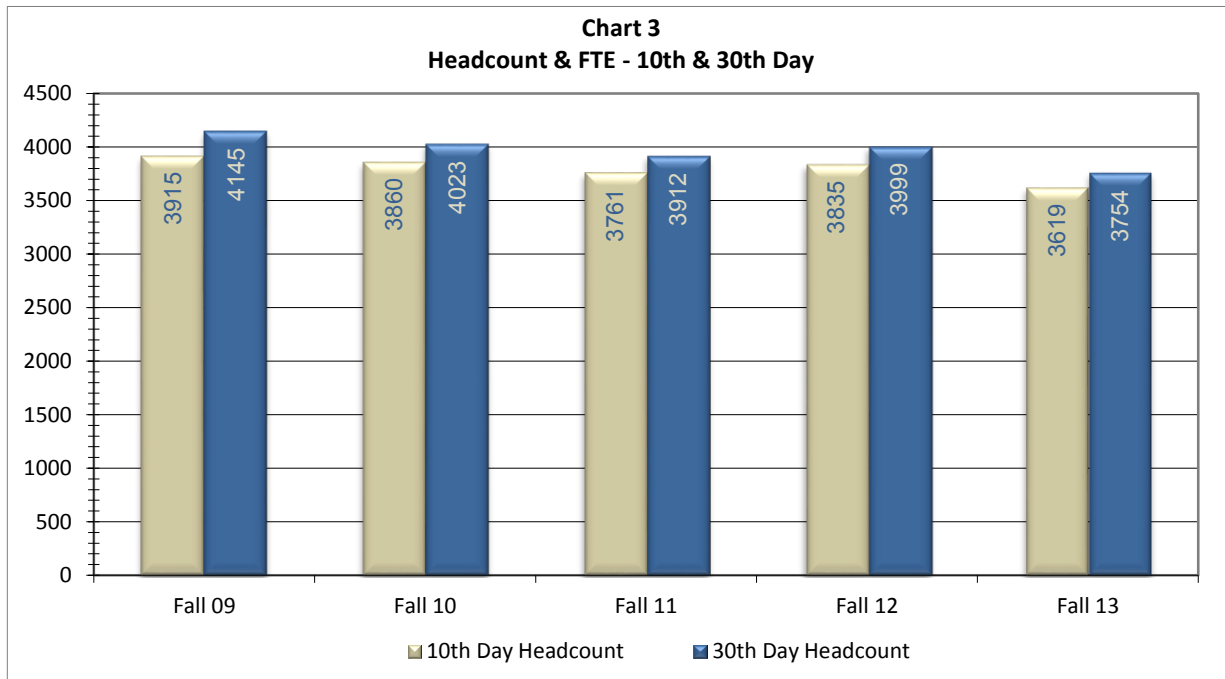


Table 5
Full-time/Part-time - 30th Day - Fall Terms

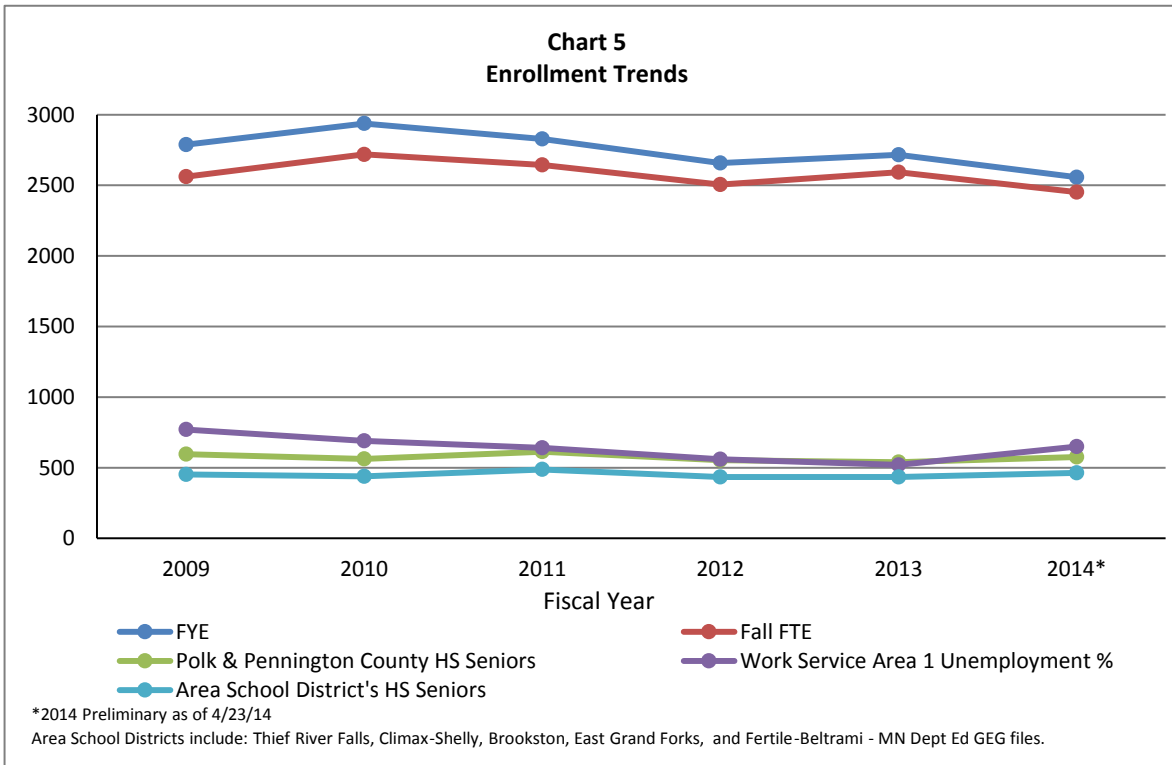
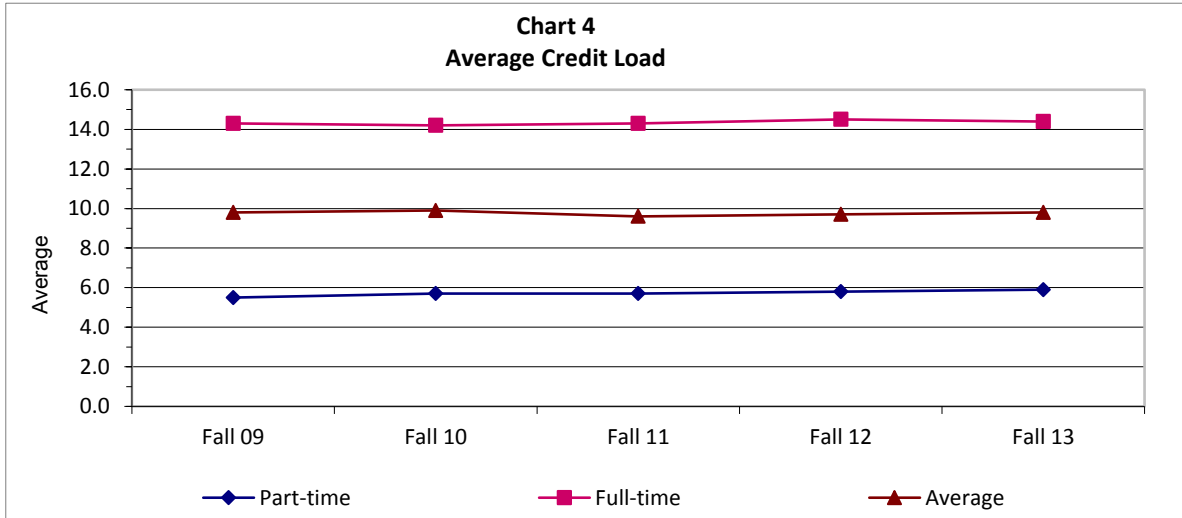
	Fall 09		Fall 10		Fall 11		Fall 12		Fall 13	
	Count	Percent	Count	Percent	Count	Percent	Count	Percent	Count	Percent
Part-time	2042	49%	2064	51%	2139	55%	2183	55%	2035	54%
Full-time	2103	51%	1959	49%	1773	45%	1816	45%	1719	46%
Total	4145		4023		3912		3999		3754	

Source: 30th Day Enrollment Tables, ST_03/MnSCU ISRS Operational Data

Table 6
Average Credit Load by Term

	Fall 09 Mean	Fall 10 Mean	Fall 11 Mean	Fall 12 Mean	Fall 13 Mean
Part-time	5.5	5.7	5.7	5.8	5.9
Full-time	14.3	14.2	14.3	14.5	14.4
Average	9.8	9.9	9.6	9.7	9.8

Source: 30th Day Enrollment Tables, ST_03/MnSCU ISRS Operational Data



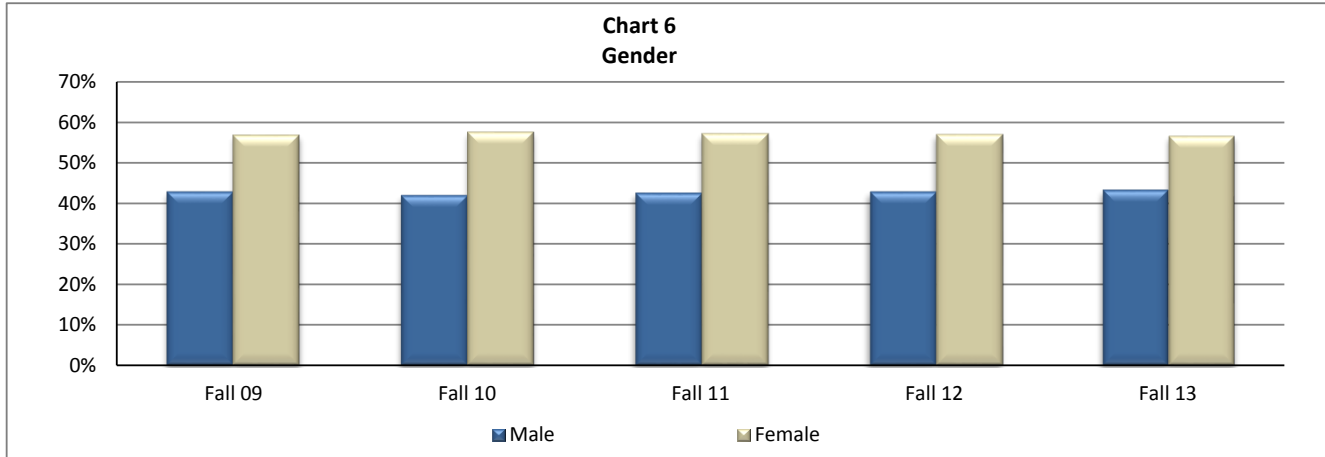
This page intentionally left blank.

Student Demographic and Academic Profile

**Table 7
Gender Distribution**

	Fall 09		Fall 10		Fall 11		Fall 12		Fall 13	
	Count	Percent	Count	Percent	Count	Percent	Count	Percent	Count	Percent
Male	1771	43%	1685	42%	1662	42%	1710	43%	1621	43%
Female	2354	57%	2313	57%	2236	57%	2275	57%	2120	56%
Unknown	20	0%	25	1%	14	0%	14	0%	13	0%
Total	4145		4023		3912		3999		3754	

Source: 30th Day Enrollment Tables, ST_03/MnSCU ISRS Operational Data



**Table 8
Age Groups**

	Fall 09		Fall 10		Fall 11		Fall 12		Fall 13	
	Count	Percent	Count	Percent	Count	Percent	Count	Percent	Count	Percent
Under 18	342	8%	357	9%	388	10%	482	12%	451	12%
18-20	1223	30%	1149	29%	1053	27%	1182	30%	1128	30%
21-24	904	22%	864	21%	832	21%	801	20%	758	20%
25-29	568	14%	558	14%	541	14%	534	13%	471	13%
30-39	497	12%	497	12%	503	13%	482	12%	463	12%
40 and older	556	13%	560	14%	551	14%	500	12%	453	12%
No response	55	1%	38	1%	44	1%	20	0%	30	1%
Total	4145		4023		3912		4001		3754	

Source: 30th Day Enrollment Tables, ST_03/MnSCU ISRS Operational Data

**Table 9
Gender by Age Group - Fall 2013**

	Female		Male		Unknown		Total	
	Count	Percent	Count	Percent	Count	Percent	Count	Percent
Under 18	300	14%	147	9%	4	31%	451	12%
18-20	570	27%	556	34%	2	15%	1128	30%
21-24	451	21%	307	19%	3	23%	761	20%
25-29	303	14%	165	10%	1	8%	469	12%
30-39	280	13%	182	11%	1	8%	463	12%
40 and older	209	10%	243	15%	2	15%	454	12%
No response	7	0%	21	1%		0%	28	1%
Total	2120		1621		13		3754	

Source: 30th Day Enrollment Tables, ST_03/MnSCU ISRS Operational Data

Table 10
Traditional Age (24 or less) vs. Non-Traditional Age Students

	Fall 09		Fall 10		Fall 11		Fall 12		Fall 13	
	Count	Percent	Count	Percent	Count	Percent	Count	Percent	Count	Percent
Traditional	2469	60%	2370	59%	2273	58%	2463	62%	2337	62%
Non-traditional	1621	39%	1615	40%	1595	41%	1516	38%	1387	37%
No response	55	1%	38	1%	44	1%	20	1%	30	1%
Total	4145		4023		3912		3999		3754	

Source: 30th Day Enrollment Tables, ST_03/MnSCU ISRS Operational Data

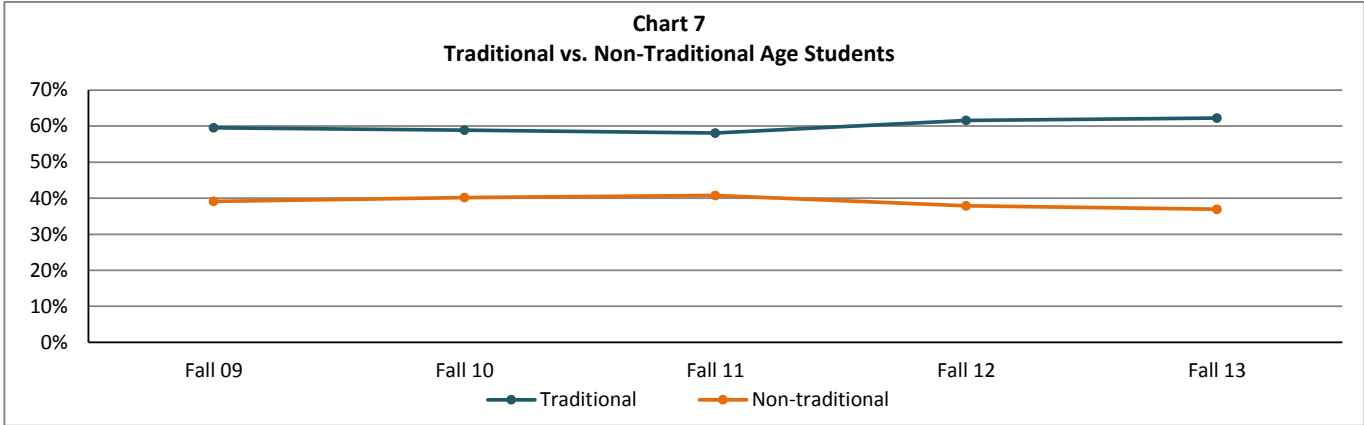


Table 11
Average Age

	All Students Mean	Full-Time Mean	Part-Time Mean
Fall 2008	26.1	22.8	29.2
Fall 2009	26.2	23.4	28.9
Fall 2010	26.5	23.8	29.0
Fall 2011	26.5	24.2	28.4
Fall 2012	25.9	23.5	27.9
Fall 2013	25.8	23.1	28.0

Source: 30th Day Enrollment Tables, ST_03/MnSCU ISRS Operational Data

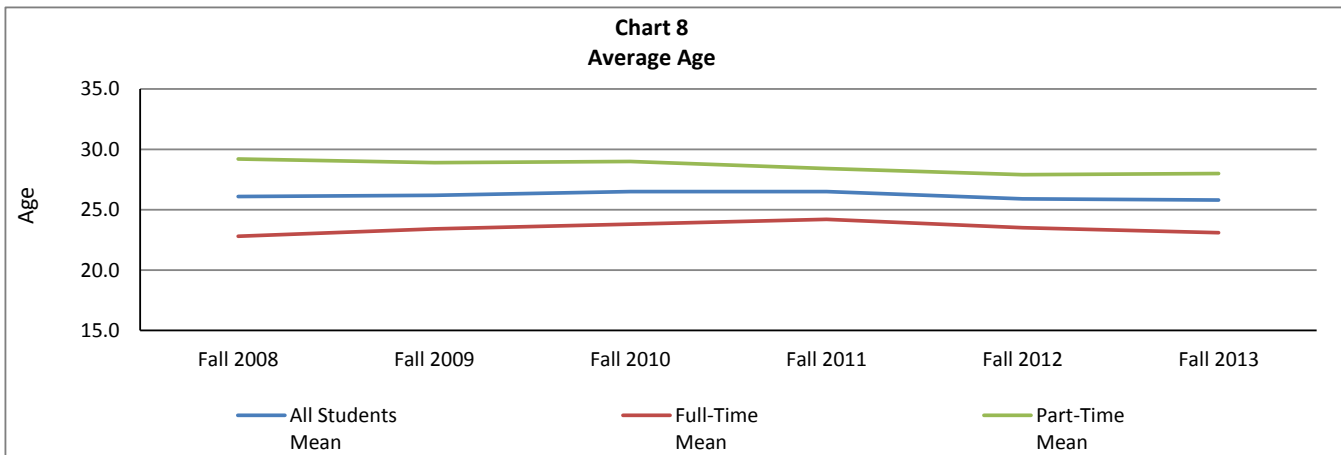


Table 12
Race/Ethnicity

	Fall 09		Fall 10		Fall 11		Fall 12		Fall 13	
	Count	Percent	Count	Percent	Count	Percent	Count	Percent	Count	Percent
African American	233	6%	253	6%	230	6%	222	6%	199	5%
Native American / Alaskan Native	133	3%	131	3%	136	3%	142	4%	120	3%
Asian/ Hawaiian/ Pacific Islander	52	1%	44	1%	52	1%	47	1%	64	2%
Hispanic	101	2%	83	2%	106	3%	103	3%	103	3%
White	3536	85%	3413	85%	3327	85%	3407	85%	3182	85%
Unknown	90	2%	99	2%	61	2%	78	2%	86	2%
Total	4145		4023		3912		3999		3754	

Source: 30th Day Enrollment Tables, ST_03/MnSCU ISRS Operational Data

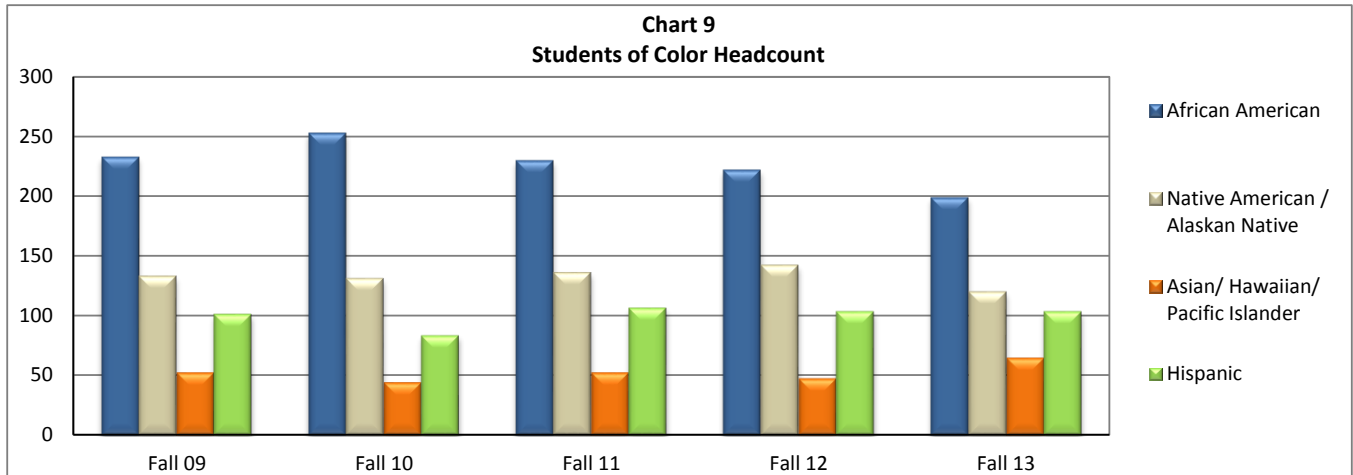


Table 13
Ethnicity of New* Students

	Fall 09		Fall 10		Fall 11		Fall 12		Fall 13	
	Count	Percent	Count	Percent	Count	Percent	Count	Percent	Count	Percent
African American	129	8%	94	6%	101	7%	95	6%	95	7%
Native American / Alaskan Native	66	4%	55	4%	64	4%	60	4%	52	4%
Hispanic/Asian/Hawaiian/ Pacific Islander	66	4%	47	3%	64	4%	65	4%	63	4%
White	1326	81%	1258	83%	1204	82%	1379	84%	1173	82%
Unknown	48	3%	55	4%	43	3%	50	3%	42	3%
Total	1635		1509		1476		1649		1425	

Source: 30th Day Enrollment Tables, ST_03/MnSCU ISRS Operational Data

*New student in the summer or fall.

Table 14
Student Level

	Fall 09		Fall 10		Fall 11		Fall 12		Fall 13	
	Count	Percent	Count	Percent	Count	Percent	Count	Percent	Count	Percent
Freshman	2269	55%	2085	52%	2018	52%	2148	54%	1980	53%
Sophomore	1876	45%	1938	48%	1894	48%	1851	46%	1774	47%
Total	4145		4023		3912		3999		3754	

Source: 30th Day Enrollment Tables, ST_03/MnSCU ISRS Operational Data

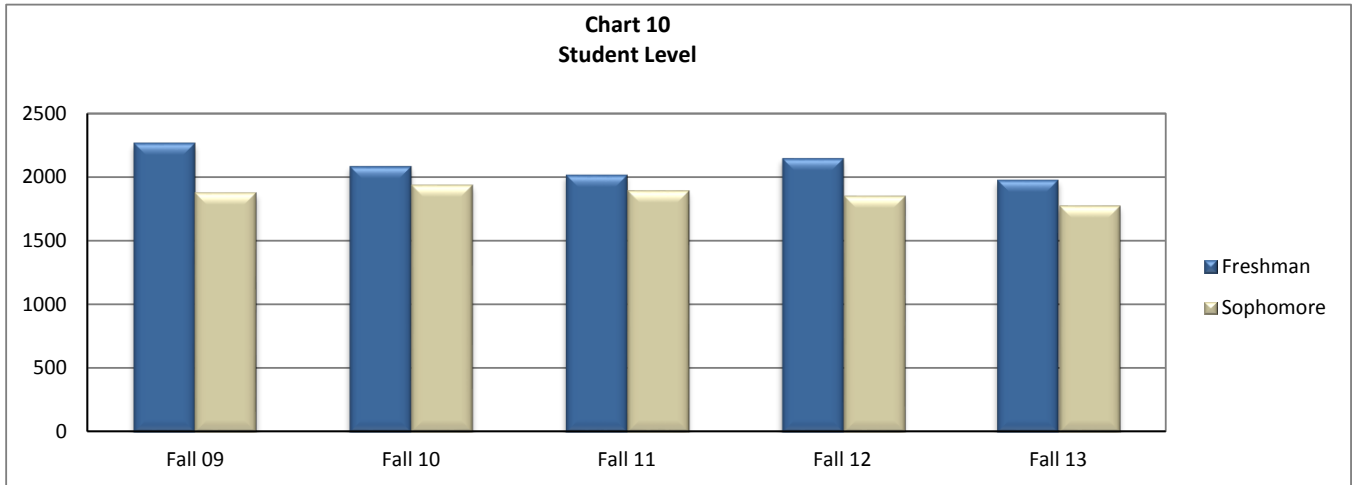


Table 15
New Students

	Fall 09		Fall 10		Fall 11		Fall 12		Fall 13	
	Count	Percent	Count	Percent	Count	Percent	Count	Percent	Count	Percent
New*	1635	39%	1509	38%	1476	38%	1649	41%	1425	38%
Return	2510	61%	2514	62%	2436	62%	2350	59%	2329	62%
Total	4145		4023		3912		3999		3754	

Source: 30th Day Enrollment Tables, ST_03/MnSCU ISRS Operational Data

*New student in the summer or fall.

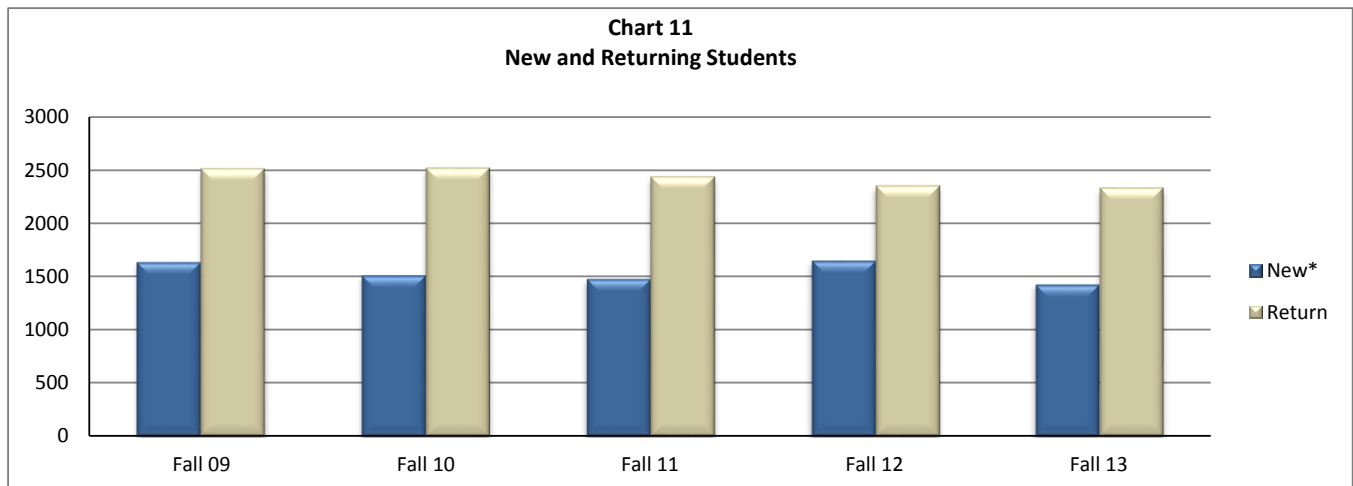


Table 16
New* Students by Admission Status

	Fall 09		Fall 10		Fall 11		Fall 12		Fall 13	
	Count	Percent	Count	Percent	Count	Percent	Count	Percent	Count	Percent
Undergrad Regular	658	40%	597	40%	533	36%	607	37%	539	38%
Undergrad Transfer	405	25%	360	24%	334	23%	392	24%	350	25%
PSEO Regular	228	14%	238	16%	261	18%	331	20%	257	18%
Undergrad Unclassified	344	21%	314	21%	348	24%	319	19%	279	20%
Total	1635		1509		1476		1649		1425	

Source: 30th Day Enrollment Tables, ST_03/MnSCU ISRS Operational Data

*New student in the summer or fall.

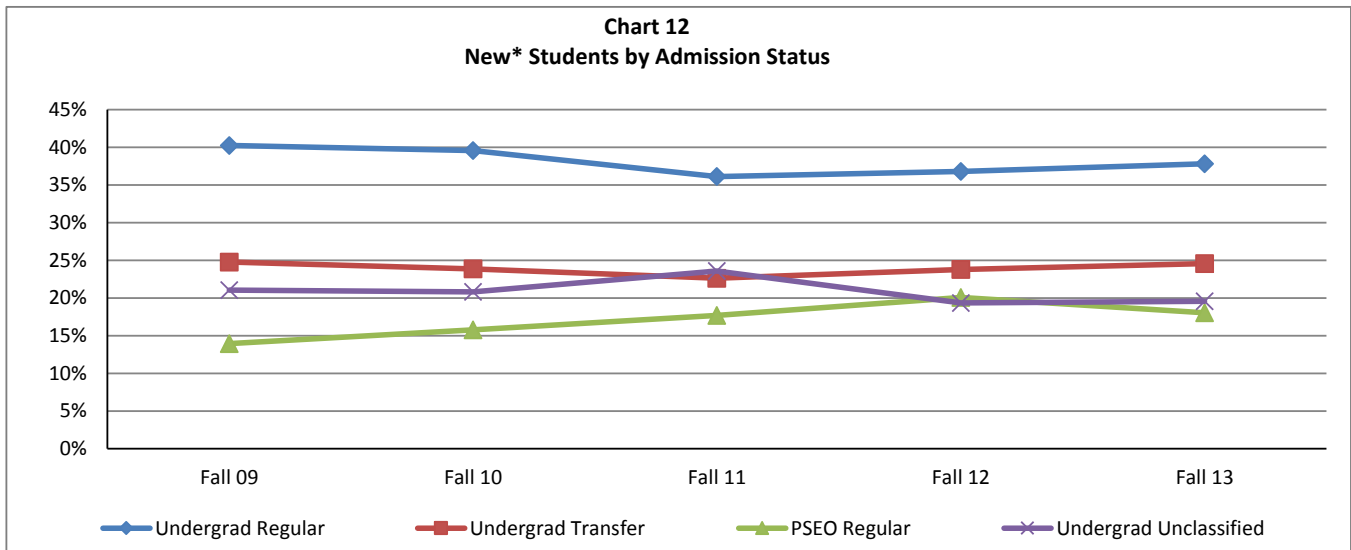


Table 17
New/Return Students by Full/Part-time Status - Fall 2013

	Part-time		Full-time		Total	
	Count	Percent	Count	Percent	Count	Percent
New*	687	34%	738	43%	1425	38%
Returning	1348	66%	981	57%	2329	62%
Total	2035		1719		3754	

Source: 30th Day Enrollment Tables, ST_03/MnSCU ISRS Operational Data

*New student in the summer or fall.

Table 18
County of Residence

	Fall 09		Fall 10		Fall 11		Fall 12		Fall 13	
	Count	Percent	Count	Percent	Count	Percent	Count	Percent	Count	Percent
Polk	409	10%	396	10%	465	12%	521	13%	509	14%
Pennington	369	9%	339	8%	283	7%	263	7%	295	8%
Roseau	179	4%	178	4%	166	4%	157	4%	147	4%
Marshall	164	4%	179	4%	144	4%	144	4%	144	4%
Red Lake	80	2%	74	2%	71	2%	64	2%	76	2%
Kittson	84	2%	59	1%	55	1%	52	1%	65	2%
Norman	60	1%	43	1%	54	1%	61	2%	63	2%
Clearwater	49	1%	60	1%	57	1%	52	1%	59	2%
Clay	83	2%	73	2%	72	2%	69	2%	58	2%
Mahnomen	45	1%	32	1%	24	1%	40	1%	51	1%
Hennepin	56	1%	59	1%	53	1%	53	1%	36	1%
Beltrami	41	1%	39	1%	39	1%	33	1%	31	1%
Otter Tail	61	1%	51	1%	46	1%	31	1%	29	1%
Becker	39	1%	23	1%	23	1%	20	1%	28	1%
Hubbard	31	1%	30	1%	25	1%	18	0%	27	1%
Dakota	10	0%	10	0%	18	0%	19	0%	14	0%
St. Louis	5	0%	7	0%	12	0%	11	0%	14	0%
Lake of the Woods	10	0%	12	0%	13	0%	18	0%	13	0%
Stearns	5	0%	7	0%	9	0%	7	0%	13	0%
Washington	2	0%	3	0%	5	0%	4	0%	12	0%
Crow Wing	7	0%	11	0%	10	0%	12	0%	11	0%
Anoka	18	0%	22	1%	16	0%	11	0%	9	0%
Ramsey	11	0%	8	0%	4	0%	8	0%	9	0%
Douglas	9	0%	6	0%	6	0%	7	0%	8	0%
Itasca	7	0%	4	0%	6	0%	11	0%	7	0%
Cass	4	0%	4	0%	3	0%	6	0%	6	0%
Wadena	10	0%	9	0%	9	0%	8	0%	6	0%
Koochiching	13	0%	6	0%	7	0%	6	0%	4	0%
Wilkin	4	0%	4	0%	5	0%	4	0%	4	0%
Other MN*	69	2%	76	2%	75	2%	67	2%	59	2%
North Dakota	1045	25%	987	25%	1013	26%	1169	29%	1137	30%
Out of State	156	4%	171	4%	158	4%	155	4%	168	4%
Unknown (MN)	312	8%	231	6%	181	5%	141	4%	118	3%
Unknown	698	17%	810	20%	785	20%	757	19%	524	14%
Total	4145		4023		3912		3999		3754	

Source: 30th Day Enrollment Tables, ST_03/MnSCU ISRS Operational Data

2009 "Other" includes 35 counties

2011 "Other" includes 32 counties

2013 "Other" includes 32 counties

2010 "Other" includes 38 counties

2012 "Other" includes 28 counties

Table 19
High School Attended of New* Students

	Fall 2009		Fall 2010		Fall 2011		Fall 2012		Fall 2013	
	Count	Percent	Count	Percent	Count	Percent	Count	Percent	Count	Percent
Lincoln Sr. High School	114	7%	105	7%	110	7%	133	8%	126	9%
EGF Senior High School	52	3%	84	6%	93	6%	94	6%	94	7%
Greenbush Middle River	25	2%	21	1%	21	1%	35	2%	24	2%
Roseau High School	19	1%	25	2%	18	1%	20	1%	24	2%
Fertile-Beltrami High School	21	1%	8	1%	14	1%	24	1%	23	2%
Winn-E-Mac High School	16	1%	23	2%	17	1%	16	1%	22	2%
Bagley High School	31	2%	24	2%	36	2%	25	2%	21	1%
Park Rapids Area HS	28	2%	31	2%	22	1%	20	1%	21	1%
Fosston High School	44	3%	18	1%	27	2%	50	3%	20	1%
Crookston High School	25	2%	14	1%	29	2%	30	2%	18	1%
Tri-County High School	22	1%	18	1%	17	1%	19	1%	16	1%
Lafayette High School	21	1%	14	1%	24	2%	10	1%	15	1%
Sacred Heart High School	21	1%	20	1%	24	2%	21	1%	15	1%
Stephen-Argyle Central	14	1%	41	3%	10	1%	45	3%	15	1%
Warroad High School	28	2%	20	1%	24	2%	18	1%	15	1%
Mahnomen High School	8	0%	3	0%	1	0%	16	1%	14	1%
Marshall County Central	21	1%	11	1%	11	1%	10	1%	14	1%
Warren-Alvarado-Oslo	12	1%	13	1%	4	0%	5	0%	14	1%
Badger High School	8	0%	6	0%	5	0%	6	0%	12	1%
Jefferson Sr. High School	9	1%	18	1%	10	1%	15	1%	12	1%
Waubun High School	3	0%	2	0%	6	0%	1	0%	12	1%
Clearbrook-Gonvick HS	5	0%	10	1%	4	0%	2	0%	11	1%
Grygla School	7	0%	3	0%	8	1%	11	1%	9	1%
Red Lake County Central	8	0%	10	1%	7	0%	9	1%	9	1%
Ada-Borup High School	4	0%	2	0%	2	0%	3	0%	7	0%
Bemidji High School	14	1%	12	1%	13	1%	15	1%	6	0%
Lancaster High School	10	1%	8	1%	2	0%	6	0%	6	0%
Norman County East HS	7	0%	5	0%	9	1%	12	1%	6	0%
Kittson Central High School	10	1%	7	0%	3	0%	4	0%	5	0%
Climax-Shelly School	6	0%		0%	5	0%	3	0%	4	0%
Fisher High School	9	1%	10	1%	9	1%	6	0%	4	0%
Norman County West HS	6	0%	7	0%	8	1%	6	0%	4	0%
Ortonville High School	2				17	1%	2	0%	4	0%
Brainerd Sr. High School	2		6	0%	2	0%	10	1%	3	0%
Grand Rapids High School	1	0%			1	0%	6	0%	3	0%
Lake of the Woods HS	4	0%	3	0%	6	0%	7	0%	3	0%
Burnsville Sr. High School	1				3	0%	6	0%	2	0%
Detroit Lakes High School	12	1%	1	0%	2	0%	2	0%	2	0%
Frazee High School	11	1%	1	0%			1	0%	2	0%
Goodridge High School	16	1%	6	0%	8	1%	7	0%	2	0%
Hawley High School	8	0%	8	1%	1	0%	2	0%	2	0%
Little Falls Community	5	0%	4	0%	1	0%	2	0%	2	0%
Moorhead High School	10	1%	5	0%	5	0%	2	0%	2	0%
Underwood School	1	0%	5	0%	1	0%	7	0%	2	0%
Blackduck Secondary	4	0%	2	0%	6	0%	2	0%	1	0%
John F Kennedy Sr. HS	2	0%			2	0%	1	0%	1	0%
Minnewaska Area HS	1	0%	5	0%	12	1%	5	0%	1	0%
Cass Lake-Bena HS	6	0%	3	0%	1	0%	2	0%		
Rosemount High School	1	0%			2	0%				
Other MN	211	13%	201	13%	200	14%	244	15%	208	15%
Unknown	34	2%	32	2%	38	3%	11	1%	13	1%
Other - GED	126	8%	134	9%	108	7%	126	8%	91	6%
Other-Home School	24	1%	17	1%	21	1%	13	1%	17	1%
Other States	182	11%	150	10%	158	11%	152	9%	161	11%
North Dakota	343	21%	333	22%	288	20%	349	21%	285	20%
Total	1635		1509		1476		1649		1425	

Source: 30th Day Enrollment Tables, ST_03/MnSCU ISRS Operational Data

2009 "Other MN" includes 123 schools

2010 "Other MN" includes 132 schools

2011 "Other MN" includes 128 schools

2012 "Other MN" includes 146 schools

*New summer or fall.

2013 "Other MN" includes 140 schools

Table 20
Financial Aid Comparison

		Gift Aid	Loans	Work Study
	Northland CTC (FY13)	32%	66%	2%
	Northland CTC (FY12)	32%	66%	2%
	Northland CTC (FY11)	35%	64%	2%
Fiscal Year 11	MNSCU 2 yr	38%	60%	1%
	MNSCU 4 yr	29%	69%	1%
	University of MN	46%	53%	1%
	Private 4 yr (Not for Profit)	61%	37%	2%
	Private For-Profit Schools	30%	69%	0%
	All MN Institutions	44%	54%	1%

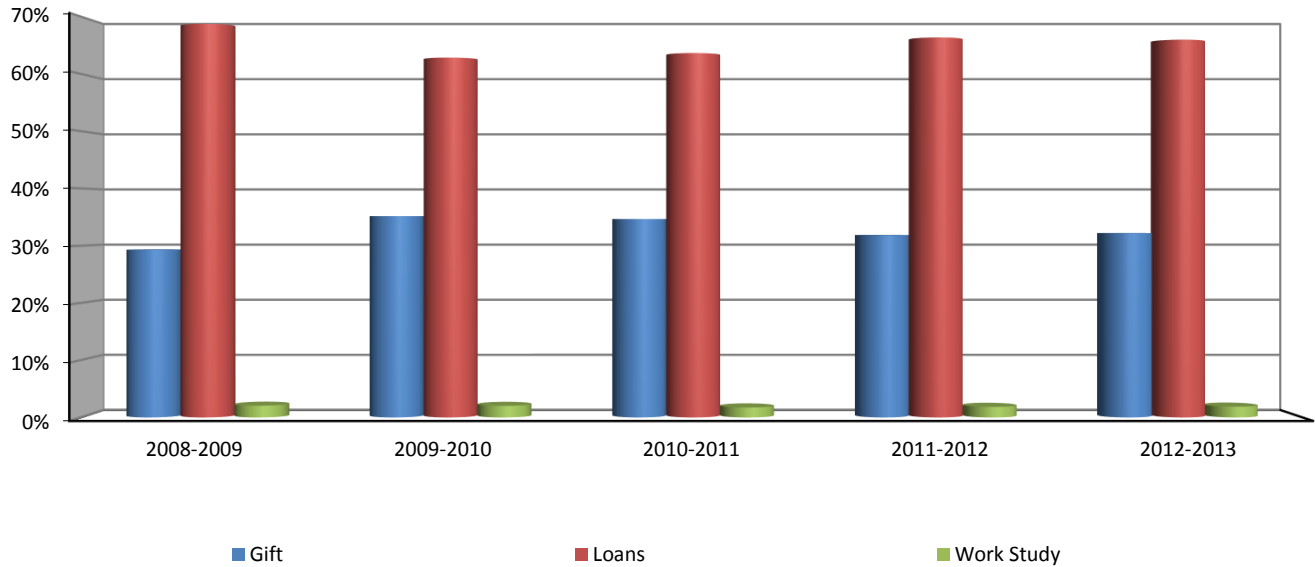
Source: MN Office of Higher Ed/Research, Data & Reports/Financial Aid at a Glance
<http://www.ohe.state.mn.us/sPages/FAA.cfm>

Table 21
Students Receiving Financial Aid

	2008-2009		2009-2010		2010-2011		2011-2012		2012-2013	
	Amount	Percent	Amount	Percent	Amount	Percent	Amount	Percent	Amount	Percent
Gift	5,825,041	29%	8,090,784	35%	8,152,562	35%	7,319,963	32%	7,407,968	32%
Loans	13,677,156	69%	14,455,254	63%	14,963,547	64%	15,255,613	66%	15,185,388	66%
Work Study	408,381	2%	464,678	2%	409,027	2%	424,020	2%	433,391	2%
Total \$	19,910,578		23,010,716		23,525,136		22,999,596		23,026,747	

Source: College Financial Aid Data

Chart 13
Financial Aid Trends



Academic Progress and Degrees Earned

Table 22
Discipline Summary by FYE - 5 Year Comparison

Subject	Discipline Description	FY 2009	FY 2010	FY 2011	FY 2012	FY 2013	FY 2013 FYE %	5 Yr Difference	5 Yr Difference %
ACCT	Accounting	33.4	32.9	36.2	41.4	39.1	1%	5.7	17%
ADMM	Administrative - Medical	2.8	0.5				0%	-2.8	-100%
ADMM	Medical Admin Secretary	14.6	19.5	26.9	26.8	25.2	1%	10.7	73%
ADMM	Medical Secretary	3.2	0.5	3.2	3.5		0%	-3.2	-100%
ADMS	Administrative	5.3	6.1	7.2	7.3	4.0	0%	-1.3	-25%
ADMS	Administrative Secretary	31.6	32.3	27.9	24.4	23.7	1%	-7.9	-25%
AGRI	Farm Operations Management	25.8	29.1	26.2	27.1	28.3	1%	2.4	16%
ANTH	Anthropology	15.0	15.9	17.0	17.5	18.8	1%	3.8	13%
ARCH	Architectural Technology	29.5	20.5	19.6	27.2	30.9	1%	1.5	5%
ART/ARTS	Art	24.2	27.9	27.8	25.7	27.9	1%	3.7	15%
ASC		0.1	0.1				0%	-0.1	-100%
AUBO	Auto Body Collision Technology	15.6	20.8	19.6	18.8	17.5	1%	1.8	12%
AUMO	Automotive Service Tech	38.8	46.9	56.6	42.6	31.4	1%	-7.4	-19%
AVIA	Aviation Maintenance Tech	33.6	51.0	75.8	85.6	88.8	3%	55.2	164%
BIOL	Biology	254.2	272.1	276.0	232.9	257.7	9%	3.5	1%
BLDG	Building Technology	5.0	6.1	5.2	5.8	10.0	0%	5.0	100%
BUS/BUSN	Business	26.9	31.1	33.9	27.4	33.1	1%	6.2	23%
BWEB	Business Web Strategist		0.5	0.3			0%	0.0	0%
CARP	Carpentry	12.7	9.2	15.5	15.3	15.7	1%	3.0	23%
CDEV	Early Childhood and Paraprofessionals	27.2	22.5	22.9	16.9	16.4	1%	-10.8	-40%
CGS				0.1			0%	0.0	0%
CHCA	Child Development		0.2				0%	0.0	0%
CHEM	Chemistry	38.8	34.5	33.8	35.0	34.7	1%	-4.1	-11%
CIS		0.1					0%	-0.1	-100%
CLST	Clinical Laboratory Science	6.5					0%	-6.5	-100%
CLST	Phlebotomy		1.6	2.0	1.0	2.0	0%	2.0	0%
CMAE	360 Programs			1.2	0.1	0.3	0%	0.3	0%
CMAE	Center Manufacturing Ap				0.1		0%	0.0	0%
CMAE	Manufacturing & Applied			1.0	0.1	0.6	0%	0.6	0%
COMM	Communications	0.3		1.6		0.8	0%	0.5	189%
CONE	Construction Electricity	68.4	77.9	59.1	48.9	45.5	2%	-22.8	-33%
COSM	Cosmetology	33.2	32.4	8.1			0%	-33.2	-100%
CPTR	Computer	6.0	5.0	3.6	4.6	3.2	0%	-2.8	-46%
CPTR	Computer Network Tech	80.6	93.1	80.1	73.4	83.9	3%	3.3	4%
CRJU	Criminal Justice - Law Enforcement	41.6	46.5	48.4	47.4	34.8	1%	-6.8	-16%
CRLT	Career Learning	0.2	0.0	0.1	0.2		0%	-0.2	-100%
CRLT	Career Related Topics	5.4	6.0	5.7	4.7	5.2	0%	-0.2	-4%
CRPL		0.0					0%	0.0	-100%
CSBT	Computer Science Business			0.5	0.2	0.1	0%	0.1	0%
CSEC	Computer Network Secu	0.0					0%	0.0	-100%
CTEC	Computer Technical Support	0.3					0%	-0.3	-100%
CVOP	Commercial Vehicle Oper		18.6	13.7	19.2	10.7	0%	10.7	0%
CVST	Cardiovascular Technology	11.3	12.5	10.2	8.3	6.9	0%	-4.4	-39%
DENT	Dental	0.1					0%	-0.1	-100%
ECON	Economics	19.5	15.1	18.0	23.5	21.5	1%	2.0	10%
ELTR	CTCE-Electronics Tech	10.5	9.5	10.2	10.4	7.9	0%	-2.6	-25%
EMTB	Emergency Medical Tech	13.8	8.7	8.8	8.5	7.7	0%	-6.1	-44%
EMTP	Paramedicine	9.4	9.7	17.7	18.6	18.4	1%	9.0	96%

Subject	Discipline Description	FY 2009	FY 2010	FY 2011	FY 2012	FY 2013	FY 2013 FYE %	5 Yr Difference	5 Yr Difference %
ENGL	Communications	0.8	205.5				0%	-0.8	-100%
ENGL	English	178.2		196.2	183.4	209.3	8%	31.1	17%
ENTR	Entrepreneurship		2.0	1.0			0%	0.0	0%
ENTR	Entrepreneurship - Custo	1.9					0%	-1.9	-100%
ETAS	Electronics Tech/Automation	13.5			14.5		0%	-13.5	-100%
ETAS	Electronics Technology		6.9	8.2		12.1	0%	12.1	0%
ETEC	Electronics Core			0.9			0%	0.0	0%
FBMT	Farm Business Management	176.4	175.3	160.9	145.1	135.3	5%	-41.1	-23%
FICR	Finance & Credit Manage		0.1				0%	0.0	0%
FIRE	Fire Technology	39.8	24.7	27.9	25.5	29.9	1%	-9.9	-25%
FITN	Fitness Specialist					2.5	0%	2.5	0%
GEOG	Geography	3.5	0.9	2.0	1.5	0.3	0%	-3.3	-92%
GSMS	General Studies-Math/Sci		0.1				0%	0.0	0%
GSSI	General Studies Social Sci	0.7	0.4	0.2			0%	-0.7	-100%
GSWS	General Studies-Work Skills		0.0				0%	0.0	0%
GTEC	General Courses/Technology/Study	0.9	1.1	1.0	0.9	0.3	0%	-0.6	-63%
HEAT	HVAC - Heating, Ventilation,...	7.3	7.7	8.1	8.7	21.4	1%	14.1	192%
HIST	History	41.2	43.6	45.1	49.4	47.8	2%	6.6	16%
HLTH	Health	0.9	1.1	1.3	1.6	0.8	0%	-0.1	-10%
HLTH	Health Education	61.7	75.8	85.8	76.9	87.8	3%	26.0	42%
HPER	Health, Physical Education,	40.8	33.8	30.1	28.5	31.4	1%	-9.4	-23%
HRES	Human Resources	0.3	0.1				0%	-0.3	-100%
HUM/HUMN	Humanities	10.0	9.3	9.2	7.8	9.2	0%	-0.8	-8%
IMAG	Imagery Analyst					12.3	0%	12.3	0%
INTD	Web Development	1.1	0.6	0.2			0%	-1.1	-100%
ISBE				0.1			0%	0.0	0%
ISYS	Information Systems			0.1			0%	0.0	0%
ITEC	Information Technology	0.2	0.7	0.8	0.5	0.3	0%	0.1	50%
JOUR	Journalism	0.6					0%	-0.6	-100%
LEGL	Legal Administrative Assistant		0.2		0.1		0%	0.0	0%
LENF	Law Enforcement	0.2	0.3				0%	-0.2	-100%
MANF	CTCE-Manufacturing	5.2	5.6	1.7	1.7	3.1	0%	-2.1	-40%
MATH	Mathematics	189.1	218.8	217.7	203.4	214.4	8%	25.3	13%
MEDS	Medical Administrative Sp			0.1			0%	0.0	0%
METC	Manufacturing Technology	0.1					0%	-0.1	-100%
MFPT	Manufacturing Process T	10.2	6.7	1.2	1.4	1.5	0%	-8.8	-86%
MGMT				0.1			0%	0.0	0%
MKTG	Marketing	7.5	3.7	5.8	5.9	5.9	0%	-1.5	-20%
MKTG	Sales, Marketing, Manage	39.2	35.1	40.6	37.6	40.1	1%	0.9	2%
MSTH	Massage Therapy	10.1	9.0	6.5	11.5	8.2	0%	-1.9	-19%
MUSC	Music	23.0	27.5	28.8	27.5	31.4	1%	8.4	37%
NAST	NAST-White Earth Tribal	0.6	0.5				0%	-0.6	-100%
NMED	New Media			9.5	5.5	8.1	0%	8.1	0%
NSCI	Natural Science	5.9	11.0	8.2	11.9	14.5	1%	8.7	148%
NURS	Nursing - Registered	65.2	74.7	67.7	68.2	62.2	2%	-2.9	-5%
NUTR	Nutrition	0.2	0.1				0%	-0.2	-100%
OJIB	Ojibwemowin-White Earth		0.6				0%	0.0	0%
OTAC	Occupational Therapy Asst	17.9	22.1	25.6	23.9	23.9	1%	6.1	34%
PARA	Paralegal	0.1					0%	-0.1	-100%
PHIL	Philosophy	92.8	103.3	109.5	108.1	102.3	4%	9.6	10%
PHRM	Pharmacy Technology	14.3	12.7	12.3	14.2	13.1	0%	-1.2	-9%
PHYS	Physics	6.6	3.3	2.5	2.0	0.9	0%	-5.7	-87%
PLBG	Plumbing Technology	14.8	18.0	9.4	5.7	5.5	0%	-9.3	-63%
PLSC/POLS/PSCI	Political Science	15.8	14.3	17.1	15.1	14.4	1%	-1.3	-9%
PNSG	Practical Nursing	311.9	305.9	235.5	193.6	179.6	7%	-132.3	-42%

Subject	Discipline Description	FY 2009	FY 2010	FY 2011	FY 2012	FY 2013	FY 2013 FYE %	5 Yr Difference	5 Yr Difference %
PPT		0.1			0.1		0%	-0.1	-100%
PRIM	Production and Inventory	1.3		0.6			0%	-1.3	-100%
PSC				0.1			0%	0.0	0%
PSYC	Psychology	102.6	111.3	106.9	97.5	93.9	3%	-8.7	-9%
PTAS	Physical Therapist Asst	24.7	25.1	26.3	25.5	28.3	1%	3.5	14%
RADT	Radiologic Technology	32.0	30.7	28.8	29.9	28.8	1%	-3.2	-10%
READ	Reading	25.1	29.4	28.2	24.1		0%	-25.1	-100%
REFR	Refrigeration/Heating,Vent,AC	2.5	2.6	2.6	2.4	5.8	0%	3.3	132%
RESP	Respiratory Care Therapist	26.8	29.3	25.8	22.2	22.9	1%	-3.8	-14%
SBMT	Small Business Management	0.4					0%	-0.4	-100%
SCMT	Specialty Crops Management	7.5	7.7	7.6	4.3		0%	-7.5	-100%
SOC/SOCI	Sociology	56.8	58.8	51.2	54.8	58.7	2%	1.9	3%
SOCS	Social Sciences	1.7	0.7	3.2	2.7	2.8	0%	1.1	63%
SPAN	Spanish	11.8	7.6	14.3	9.8	10.7	0%	-1.2	-10%
SPCH	GE - Communications	1.4	1.1	1.1	3.8		0%	-1.4	-100%
SPCH	Speech	66.3	69.2	65.0	65.3	71.5	3%	5.2	8%
SSCI	General Courses		19.6	18.7	21.8	24.1	1%	24.1	0%
SSCI	Social Sciences/Human Relations	19.4	2.2	2.3	1.8	1.3	0%	-18.1	-93%
STSK	Study Skills/General Courses	0.5	0.6	0.3			0%	-0.5	-100%
SUPL	Supervisory Management	0.1	0.1	0.5	0.4	0.9	0%	0.8	900%
SURT	Surgical Technology	20.2	18.7	16.0	23.8	22.7	1%	2.5	13%
THTR	Theater	0.1	0.2				0%	-0.1	-100%
UAST	Unmanned Aerial System				3.4	18.7	1%	18.7	0%
WELD	Welding Technology	30.4	43.6	27.7	33.5	43.2	2%	12.8	42%
Total		2787.6	2938	2827.5	2658.9	2717.0		-70.6	-3%

Source: MnSCU ISRS Operational Data, ST06-Students by Course, SUBJ

FYE=Student Full Year Equivalent

Table 23
Fall Majors Headcount by CIP Code - 5 Year Comparison
Sorted by Fall 2013 Headcount - Descending Order

CIP Code	Major/CIP Code Description	Fall 2009	Fall 2010	Fall 2011	Fall 2012	Fall 2013	% Change from 2012	5 Yr Difference	5 Yr Difference %
240101	Liberal Arts and Sciences	676	728	670	681	699	3%	23.0	3%
513901	Licensed Practical	688	623	547	538	477	-11%	-211.0	-31%
010104	Farm/Farm and Ranch M	433	393	340	301	326	8%	-107.0	-25%
513801	Registered Nursing/Re	166	144	163	194	170	-12%	4.0	2%
510911	Radiologic Technology	111	100	99	93	82	-12%	-29.0	-26%
110901	Computer Systems Netw	95	69	67	64	78	22%	-17.0	-18%
521801	Sales, Distribution,	64	88	69	82	78	-5%	14.0	22%
510806	Physical Therapy Tech	52	60	62	78	64	-18%	12.0	23%
430107	Criminal Justice/Poli		1	85	73	62	-15%	62.0	0%
510803	Occupational Therapis	60	62	58	59	58	-2%	-2.0	-3%
470607	Airframe Mechanics an	39	55	66	70	56	-20%	17.0	44%
510909	Surgical Technology/T	53	43	47	46	55	20%	2.0	4%
520201	Business Administration	46	47	43	67	55	-18%	9.0	20%
430201	Fire Prevention and S	36	31	38	36	53	47%	17.0	47%
520302	Accounting Technology	1	5	62	58	51	-12%	50.0	5000%
131501	Teacher Assistant/Aid	54	60	47	42	48	14%	-6.0	-11%
290203	Signal/Geospatial Int					44	0%	44.0	0%
480508	Welding Technology/We	44	34	37	53	44	-17%	0.0	0%
510716	Medical Administrativ	41	46	43	38	40	5%	-1.0	-2%
460302	Electrician	70	58	43	44	39	-11%	-31.0	-44%
510904	Emergency Medical Tec	46	57	53	51	35	-31%	-11.0	-24%
151303	Architectural Draftin	26	19	36	41	34	-17%	8.0	31%
470604	Automobile/Automotive	60	74	53	46	33	-28%	-27.0	-45%
510908	Respiratory Care Ther	50	59	42	37	32	-14%	-18.0	-36%
510805	Pharmacy Technician/A	40	56	51	35	28	-20%	-12.0	-30%
520401	Administrative Assist	44	35	33	35	27	-23%	-17.0	-39%
470201	Heating, Air Conditio	35	26	32	36	25	-31%	-10.0	-29%
010103	Agricultural Economic			34	26	23	-12%	23.0	0%
510713	Medical Insurance Cod	13	41	31	21	20	-5%	7.0	54%
150406	Automation Engineer T				18	18	0%	18.0	0%
460201	Carpentry/Carpenter	10	22	19	20	17	-15%	7.0	70%
510901	Cardiovascular Techno	29	16	16	15	17	13%	-12.0	-41%
470603	Autobody/Collision an	25	21	20	17	15	-12%	-10.0	-40%
521909	Special Products Mark	33	12	16	14	15	7%	-18.0	-55%
513501	Massage Therapy/Thera	17	14	20	13	12	-8%	-5.0	-29%
510000	Health Services/Allied					11	0%	11.0	0%
460503	Plumbing Technology/P	17	8	6	9	9	0%	-8.0	-47%
090702	Digital Communication		13	12	12	8	-33%	8.0	0%
310507	Physical Fitness Tech				4	8	100%	8.0	0%
490101	Aeronautics/Aviation/			3	18	8	-56%	8.0	0%
510708	Medical Transcription	15	16	15	6	8	33%	-7.0	-47%
510710	Medical Office Assist			3	13	8	-38%	8.0	0%
511009	Phlebotomy Technician	11	9	7	10	8	-20%	-3.0	-27%
520204	Office Management and			2	1	3	200%	3.0	0%
150303	Electrical, Electroni	2	1	1	3	2	-33%	0.0	0%
111006	Computer Support Spec			3	3	1	-67%	1.0	0%
430203	Fire Science/Fire-fig	6	5	3	6	1	-83%	-5.0	-83%
439999	Homeland Security, La					1	0%	1.0	0%
480503	Machine Shop Technolo					1	0%	1.0	0%
490205	Truck and Bus Driver/	16	9	11	8	1	-88%	-15.0	-94%
513902	Nursing Assistant/Aid	5	3	4	4	1	-75%	-4.0	-80%
520203	Logistics, Materials,	4	6	1	1	1	0%	-3.0	-75%
010301	Agricultural Production	21	17	27	36		-100%	-21.0	-100%
010304	Crop Production			19			0%	0.0	0%

This page intentionally left blank.

CIP Code	Major/CIP Code Description	Fall 2009	Fall 2010	Fall 2011	Fall 2012	Fall 2013	% Change from 2012	5 Yr Difference	5 Yr Difference %
090701	Radio and Television		1	1	6		-100%	0.0	0%
120401	Cosmetology/Cosmetolo	31	11				0%	-31.0	-100%
120410	Nail Technician/Specia	1					0%	-1.0	-100%
150613	Manufacturing Engineering	21	15	21			0%	-21.0	-100%
150702	Quality Control Techn	6	4	2			0%	-6.0	-100%
151204	Computer Software Tec	5	5				0%	-5.0	-100%
430104	Criminal Justice/Safe	78	85				0%	-78.0	-100%
520205	Operations Management	2	3	1			0%	-2.0	-100%
520207	Customer Service Mana		2	3	1		-100%	0.0	0%
520301	Accounting	39	47	1			0%	-39.0	-100%
520701	Entrepreneurship/Entr	3	1				0%	-3.0	-100%
	Unknown/Blank	705	663	724	816	744	-9%	39.0	6%
Total		4145	4023	3912	3999	3754	-6%	-391.0	-9%

Source: 30th Day Enrollment Tables, ST_03/MnSCU ISRS Operational Data

Table 24
Fall Majors FYE by CIP Code - 5 Year Comparison
Sorted by Fall 2013 FYE - Descending Order

CIP Code	Major/CIP Code Description	Fall 2009	Fall 2010	Fall 2011	Fall 2012	Fall 2013	% Change from 2012	5 Yr Difference	5 Yr Difference %
240101	Liberal Arts and Sciences	266.5	279.0	250.8	258.4	276.9	7%	10.4	4%
513901	Licensed Practical	261.8	232.8	201.3	197.6	175.8	-11%	-86.0	-33%
010104	Farm/Farm and Ranch M	70.1	64.8	55.5	47.6	53.8	13%	-16.3	-23%
513801	Registered Nursing/Re	49.1	45.8	50.0	60.1	52.5	-13%	3.4	7%
470607	Airframe Mechanics an	25.5	38.9	46.4	47.1	37.0	-21%	11.6	45%
430107	Criminal Justice/Poli		0.4	42.7	35.4	31.7	-10%	31.7	0%
110901	Computer Systems Netw	37.1	25.6	25.9	25.5	30.1	18%	-7.0	-19%
510911	Radiologic Technology	41.6	38.3	37.6	34.9	29.7	-15%	-11.9	-29%
521801	Sales, Distribution,	24.9	33.5	27.3	33.7	29.5	-12%	4.6	18%
510806	Physical Therapy Tech	19.8	21.7	25.3	27.6	25.1	-9%	5.2	26%
460302	Electrician	41.6	33.6	26.2	26.6	24.6	-8%	-17.0	-41%
430201	Fire Prevention and S	14.9	13.7	14.8	15.5	24.1	55%	9.2	62%
480508	Welding Technology/We	22.3	16.8	20.2	27.1	22.3	-18%	0.0	0%
290203	Signal/Geospatial Int					21.3	0%	21.3	0%
510909	Surgical Technology/T	21.2	17.7	19.1	17.7	20.8	17%	-0.4	-2%
510803	Occupational Therapis	21.6	22.3	19.7	21.5	19.6	-9%	-2.0	-9%
520302	Accounting Technology	0.4	1.5	22.3	21.6	19.5	-10%	19.1	4783%
520201	Business Administration	17.5	17.0	16.0	25.2	18.9	-25%	1.5	8%
131501	Teacher Assistant/Aid	21.2	22.7	15.7	15.8	18.3	16%	-2.9	-14%
151303	Architectural Draftin	12.1	9.3	17.1	20.2	17.8	-12%	5.7	47%
470604	Automobile/Automotive	29.5	35.3	27.0	22.4	16.0	-29%	-13.6	-46%
510716	Medical Administrativ	14.7	15.9	13.7	14.2	13.9	-2%	-0.8	-5%
470201	Heating, Air Conditio	14.3	10.9	12.7	20.4	13.2	-35%	-1.0	-7%
510904	Emergency Medical Tec	17.2	21.9	18.7	19.4	12.7	-34%	-4.5	-26%
510908	Respiratory Care Ther	20.5	22.6	16.5	15.2	12.6	-17%	-7.9	-39%
510805	Pharmacy Technician/A	15.7	20.4	19.1	12.2	10.3	-16%	-5.4	-35%
520401	Administrative Assist	16.5	11.2	12.5	12.6	9.6	-24%	-6.8	-42%
460201	Carpentry/Carpenter	5.7	10.4	9.8	10.2	9.3	-9%	3.6	63%
150406	Automation Engineer T				6.6	7.9	19%	7.9	0%
470603	Autobody/Collision an	12.6	10.7	10.6	8.1	7.6	-6%	-5.0	-40%
510901	Cardiovascular Techno	12.2	6.1	5.5	5.9	6.4	8%	-5.8	-48%
510713	Medical Insurance Cod	3.9	10.6	7.0	6.2	6.0	-4%	2.1	55%
513501	Massage Therapy/Thera	8.4	5.8	9.4	6.4	5.1	-20%	-3.3	-39%
460503	Plumbing Technology/P	10.5	4.8	3.5	5.3	4.8	-8%	-5.6	-54%
490101	Aeronautics/Aviation/			1.6	10.3	4.5	-56%	4.5	0%
510000	Health Services/Allied					3.4	0%	3.4	0%
310507	Physical Fitness Tech				1.8	3.2	79%	3.2	0%
090702	Digital Communication		6.2	5.4	5.4	3.0	-44%	3.0	0%
510708	Medical Transcription	4.7	4.8	4.3	2.3	3.0	32%	-1.7	-36%
510710	Medical Office Assist			0.9	4.0	2.5	-36%	2.5	0%
511009	Phlebotomy Technician	3.8	3.3	1.9	3.4	2.4	-28%	-1.4	-37%
010103	Agricultural Economic			3.8	2.3	2.0	-13%	2.0	0%
521909	Special Products Mark	3.4	1.5	1.6	1.5	1.6	11%	-1.7	-52%
520204	Office Management and			0.3	0.1	1.0	669%	1.0	0%
150303	Electrical, Electroni	0.7	0.4	0.4	1.3	0.8	-35%	0.1	19%
430203	Fire Science/Fire-fig	2.3	1.3	1.3	1.4	0.4	-69%	-1.9	-81%
490205	Truck and Bus Driver/	9.5	5.4	6.6	4.7	0.4	-91%	-9.1	-96%
111006	Computer Support Spec			1.2	1.6	0.3	-79%	0.3	0%
480503	Machine Shop Technolo					0.2	0%	0.2	0%
439999	Homeland Security, La					0.1	0%	0.1	0%
513902	Nursing Assistant/Aid	0.5	0.3	0.4	0.8	0.1	-88%	-0.4	-80%
520203	Logistics, Materials,	0.5	0.4	0.2	0.1	0.1	-23%	-0.4	-79%
010301	Agricultural Production	4.6	3.5	5.3	7.1		-100%	-4.6	-100%
010304	Crop Production			2.7			0%	0.0	0%

CIP Code	Major/CIP Code Description	Fall 2009	Fall 2010	Fall 2011	Fall 2012	Fall 2013	% Change from 2012	5 Yr Difference	5 Yr Difference %
090701	Radio and Television		0.6	0.4	2.6		-100%	0.0	0%
120401	Cosmetology/Cosmetolo	14.8	4.3				0%	-14.8	-100%
120410	Nail Technician/Specia	0.4					0%	-0.4	-100%
150613	Manufacturing Engineering	10.0	6.9	9.0			0%	-10.0	-100%
150702	Quality Control Techn	0.5	0.4	0.1			0%	-0.5	-100%
151204	Computer Software Tec	1.9	1.8				0%	-1.9	-100%
430104	Criminal Justice/Safe	37.9	41.9				0%	-37.9	-100%
520205	Operations Management	0.1	0.3	0.1			0%	-0.1	-100%
520207	Customer Service Mana		0.5	0.4	0.2		-100%	0.0	0%
520301	Accounting	15.4	17.3	0.2			0%	-15.4	-100%
520701	Entrepreneurship/Entr	1.1	0.3				0%	-1.1	-100%
	Unknown/Blank	96.9	98.5	104.1	121.4	112.2	-8%	15.3	16%
Total		1,359.9	1,322.1	1,252.3	1,296.3	1,226.2	-5%	-133.7	-10%

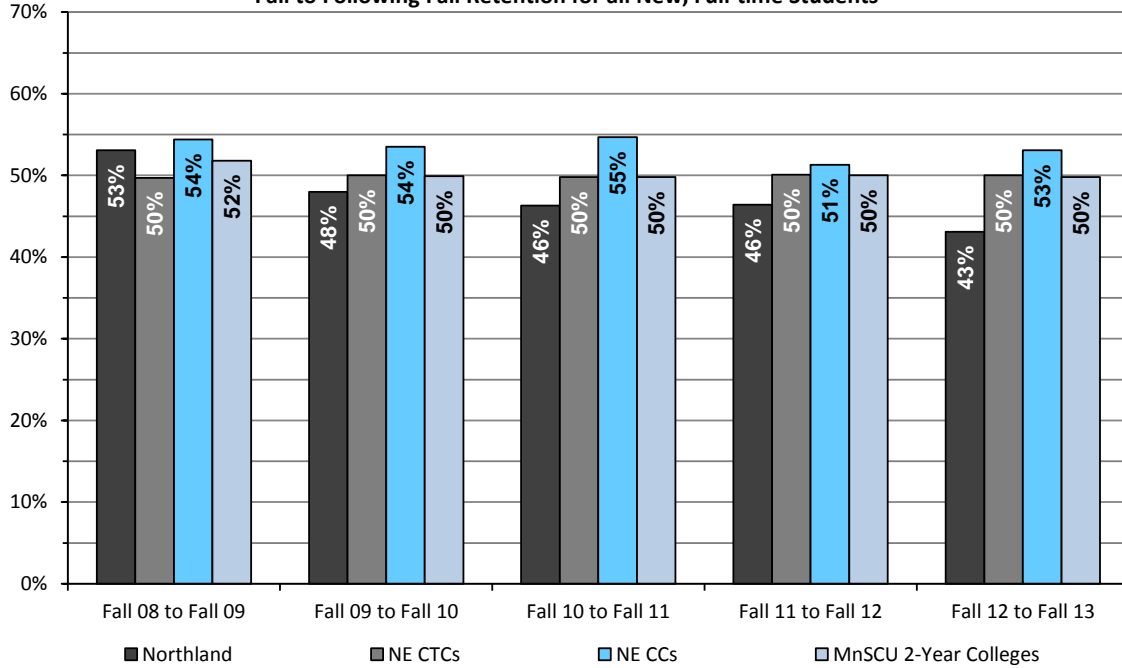
Source: 30th Day Enrollment Tables, ST_03/MnSCU ISRS Operational Data

Table 25
On-line Enrollment

	Fiscal Year				
	2009	2010	2011	2012	2013
Sections Offered	374	368	233	429	401
FYE	384.9	439.7	517.2	710.2	700.1
Duplicated Headcount	4874	5400	6011	8162	7912

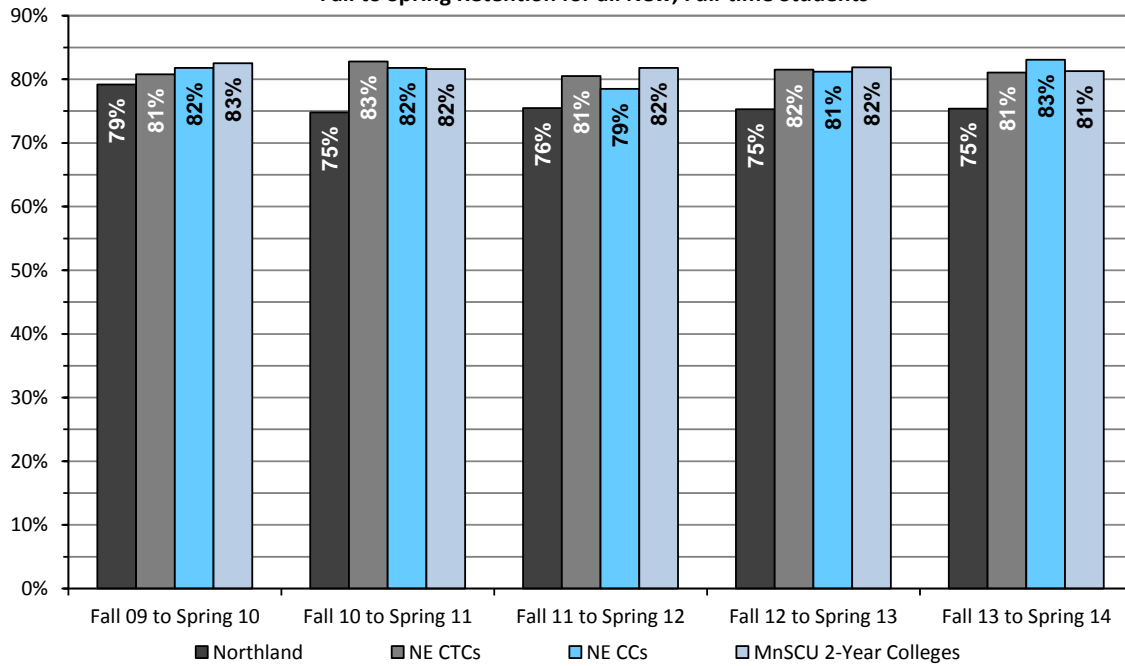
Source: MnSCU ISRS Operational Data, ST06 Student by Course; Media Codes 03, 09, 12, 13

Chart 14
Northland Community and Technical College
Fall to Following Fall Retention for all New, Full-time Students



NE CTC's - Hibbing CC, Lake Superior College and Mesabi Range College
 NE CC's - Fond du Lac TCC, Itasca CC, Rainy River CC and Vermilion CC
 Source: MnSCU ISRS Operational Data/Student Persistence Tables/all adm stat, new, full-time

Chart 15
Northland Community and Technical College
Fall to Spring Retention for all New, Full-time Students



NE CTC's - Hibbing CC, Lake Superior College and Mesabi Range College
 NE CC's - Fond du Lac TCC, Itasca CC, Rainy River CC and Vermilion CC
 Source: MnSCU ISRS Operational Data/Student Persistence Tables/all adm stat, new, full-time
 Fall 13 to Spring 14 is Preliminary as of 4/24/14

Table 26
Enrollment by Program

	Fall 09		Fall 10		Fall 11		Fall 12		Fall 13	
	Count	Percent	Count	Percent	Count	Percent	Count	Percent	Count	Percent
Liberal Arts	676	16%	728	18%	670	17%	681	17%	699	19%
Occupational	2764	67%	2632	65%	2518	64%	2502	63%	2311	62%
Undecided	705	17%	663	16%	724	19%	816	20%	744	20%
Total	4145		4023		3912		3999		3754	

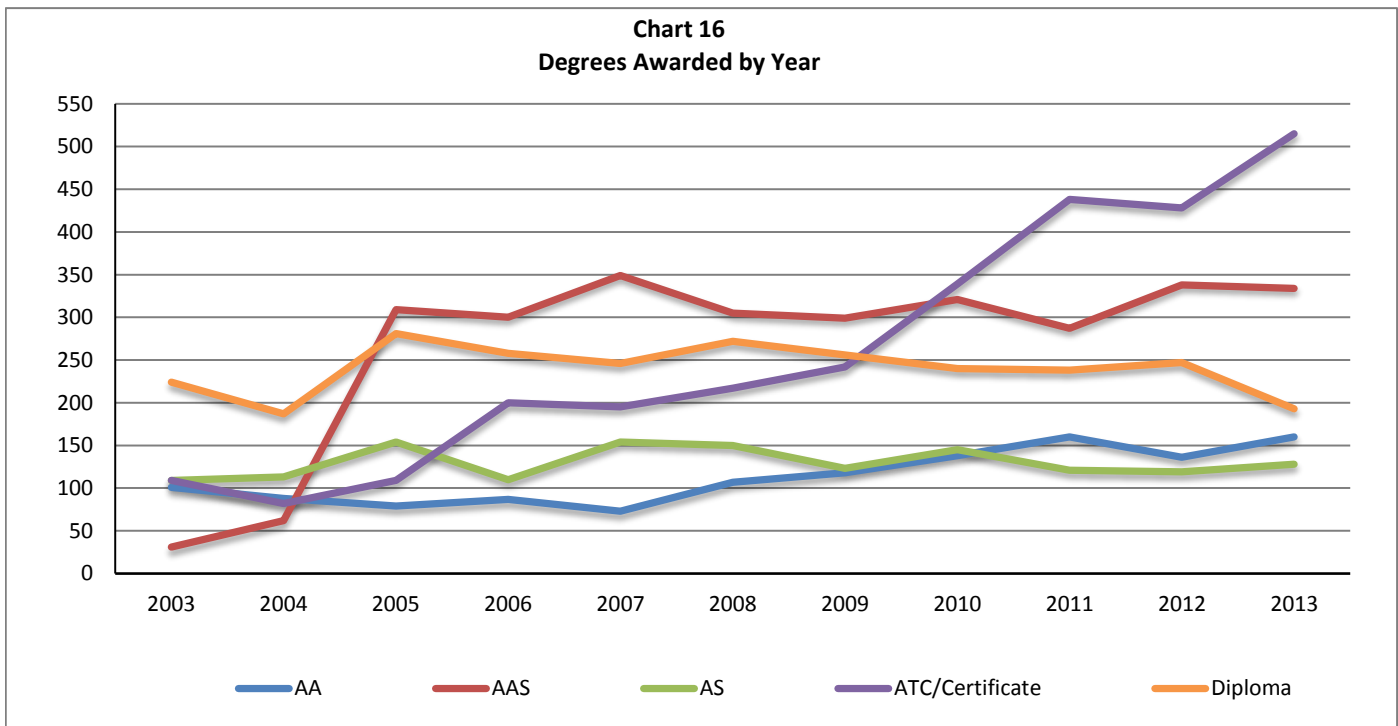
Source: 30th Day Enrollment Tables, ST_03/MnSCU ISRS Operational Data/CIP Code 240101 LA

Table 27
Degrees Awarded by Fiscal Year

	2009		2010		2011		2012		2013	
	Count	Percent	Count	Percent	Count	Percent	Count	Percent	Count	Percent
AA	118	11%	138	12%	160	13%	136	11%	160	12%
AAS	299	29%	321	27%	287	23%	338	27%	334	25%
AS	123	12%	145	12%	121	10%	119	9%	128	10%
ATC/Certificate	242	23%	339	29%	438	35%	428	34%	515	39%
Diploma	256	25%	240	12%	238	14%	247	19%	193	16%
Total Degrees	1038		1183		1244		1268		1330	
Total Students	955		1114		1119		1114		1165	

Source: ITS Management Reports/Academic/Awards Granted, 017ACA

Chart 16
Degrees Awarded by Year



**Table 28
Persistence and Completion Rates for New, Fall, Full-Time Students
Fall 2009**

	Fall 2009 Entering Cohort	Fall to Spring			Fall to Fall		2-Year		3-Year	
		First Spring Retention Rate	First Spring Success Rate	Second Fall Retention Rate	Second Fall Success Rate	Third Fall Retention Rate	Third Fall Success Rate	Three Year Grad Rate	Fourth Fall Retention Rate	Fourth Fall Success Rate
Gender										
Female	411.	81%	86%	54%	69%	27%	65%	42%	9%	65%
Male	469.	78%	83%	43%	64%	13%	59%	35%	5%	62%
Race/Ethnicity										
American Indian or Alaska Native	30.	70%	73%	40%	53%	13%	40%	27%	3%	43%
Asian	8.	75%	75%	25%	38%	38%	63%	13%	13%	50%
Black or African American	84.	86%	90%	63%	81%	18%	70%	39%	5%	74%
Hispanic of any race	41.	76%	83%	32%	49%	27%	68%	22%	12%	56%
Two or more races	34.	65%	71%	26%	41%	9%	41%	26%	3%	44%
White	681.	80%	85%	49%	68%	19%	62%	41%	7%	64%
AgeGroup										
*Non-traditional Age	159.	76%	81%	53%	67%	20%	63%	50%	6%	64%
*Traditional Age	721.	80%	85%	47%	66%	19%	61%	36%	7%	63%
Underrepresented										
Not	235.	83%	89%	50%	71%	22%	69%	45%	8%	70%
Underrepresented	579.	77%	83%	46%	63%	18%	58%	35%	7%	59%
Unknown	66.	73%	88%	56%	77%	18%	65%	44%	3%	74%
Admission Status										
High School	12.	92%	92%	50%	67%	17%	67%	50%	0%	83%
Undergraduate Other	30.	80%	83%	43%	63%	27%	70%	20%	10%	80%
Undergraduate Regular	526.	76%	82%	42%	60%	19%	56%	32%	7%	57%
Undergraduate Transfer	312.	84%	89%	59%	77%	19%	71%	51%	6%	72%
Total	880.	79%	85%	48%	66%	19%	62%	38%	7%	63%

Success rate is the retention, transfer, and graduation combined; measure at beginning of term.

*Private data cell sizes less than 5 not reported. Racial/ethnic status for such reported in aggregate.

**Underrepresented - Student of color, Pell eligible, or first generation (MN defined - neither parent has any post secondary education).

Source: MnSCU ISRS Operational Data; Student Persistence Tables; Fall Cohort, New, Full-time Students; Undergrad Regular, Transfer, Other and High School

**Table 29
Persistence and Completion Rates for New, Fall, Full-Time Students
Fall 2010**

	Fall 2010 Entering Cohort	Fall to Spring			Fall to Fall			2-Year			3-Year			
		First Spring Retention Rate	First Spring Success Rate	Second Fall Retention Rate	Second Fall Success Rate	Third Fall Retention Rate	Third Fall Success Rate	Third Year Grad Rate	Fourth Fall Retention Rate	Fourth Fall Success Rate				
Gender														
Female	351.	75%	83%	50%	69%	23%	65%	41%	8%	64%				
Male	424.	75%	78%	43%	59%	14%	52%	35%	4%	52%				
Race/Ethnicity														
American Indian or Alaska Native	15.	47%	53%	40%	47%	13%	27%	13%	0%	27%				
Asian	6.	50%	67%	33%	67%	17%	83%	50%	17%	83%				
Black or African American	50.	72%	78%	42%	56%	14%	62%	36%	0%	58%				
Hispanic of any race	37.	68%	78%	41%	59%	19%	46%	24%	16%	51%				
Two or more races	34.	62%	62%	44%	53%	6%	41%	18%	3%	35%				
White	628.	77%	83%	47%	65%	19%	60%	40%	6%	60%				
Age Group														
*Non-traditional Age	143.	75%	80%	54%	71%	22%	66%	49%	6%	62%				
*Traditional Age	632.	75%	81%	45%	62%	17%	56%	35%	6%	56%				
Underrepresented														
Not	182.	84%	89%	54%	71%	25%	70%	45%	8%	68%				
Underrepresented	521.	71%	78%	44%	60%	16%	53%	35%	6%	54%				
Unknown	72.	79%	81%	47%	68%	19%	64%	44%	4%	61%				
Admission Status														
High School	12.	83%	83%	33%	58%	0%	42%	42%	0%	50%				
Undergraduate Other	64.	72%	73%	38%	55%	11%	53%	23%	6%	52%				
Undergraduate Regular	456.	73%	79%	43%	59%	18%	52%	31%	7%	52%				
Undergraduate Transfer	243.	79%	86%	56%	76%	21%	72%	55%	4%	70%				
Total	775.	75%	81%	46%	64%	18%	58%	38%	6%	58%				

Success rate is the retention, transfer, and graduation combined; measure at beginning of term.

*Private data cell sizes less than 5 not reported. Racial/ethnic status for such reported in aggregate.

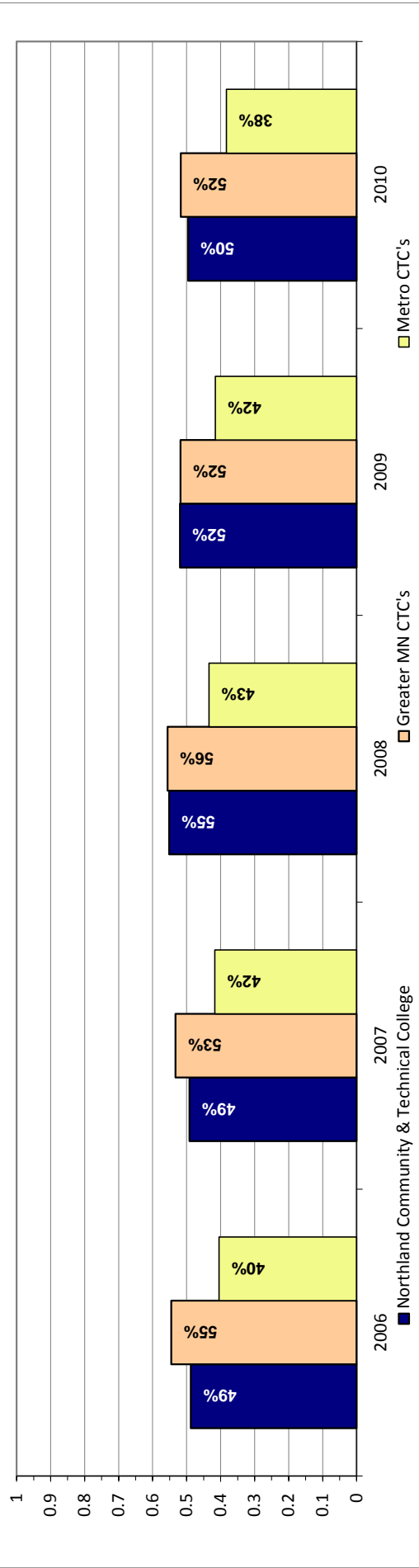
**Underrepresented - Student of color, Pell eligible, or first generation (MIN defined - neither parent has any post secondary education).

Source: MnSCU ISRS Operational Data; Student Persistence Tables; Fall Cohort, New, Full-time Students; Undergrad Regular, Transfer, Other and High School

Table 30
 IPEDS 3-Year Graduation and Transfer-out Rates
 Fall 2006, Fall 2007, Fall 2008, Fall 2009 and Fall 2010 First-time, Full-time, Degree Seeking Students

COLLEGE Cohort	Cohort					Graduation Rate					Transfer Rate					Combined Grad/Trans Rate				
	2006	2007	2008	2009	2010	2006	2007	2008	2009	2010	2006	2007	2008	2009	2010	2006	2007	2008	2009	2010
Northland Community & Technical College	574	482	426	527	456	29%	31%	30%	29%	28%	20%	18%	26%	23%	49%	49%	55%	52%	50%	
Metro CC's	3,759	3,830	3,691	3,836	3,560	13%	15%	17%	17%	14%	41%	38%	40%	35%	54%	54%	57%	52%	51%	
Metro CTC's	2,385	2,579	2,689	3,101	2,583	15%	15%	15%	17%	15%	26%	26%	28%	24%	40%	42%	43%	42%	38%	
Metro TC's	1,254	1,272	1,189	1,326	1,020	30%	30%	30%	28%	31%	17%	19%	17%	17%	47%	47%	47%	46%	45%	
Greater MN CC's	726	741	699	833	798	30%	28%	31%	29%	29%	31%	31%	28%	30%	61%	60%	60%	59%	57%	
Greater MN CTC's	6,649	6,666	6,535	7,004	7,518	35%	33%	33%	33%	33%	20%	20%	23%	19%	55%	53%	56%	52%	52%	
Greater MN TC's	1,815	1,921	1,787	2,078	546	41%	40%	40%	38%	28%	21%	21%	24%	20%	62%	61%	64%	58%	45%	
Total Colleges	16,588	17,009	16,590	18,178	16,025	27%	27%	27%	27%	25%	26%	26%	28%	24%	53%	52%	54%	51%	49%	

Chart 17
 3-Year Combined Graduate/Transfer Rate



Source: MNSCU System Office Research, April 2014
 Note: Starting with 2010 cohort St Cloud Technical and Community College moved from Greater MN TC to Greater MN CTC comparison group
 Note: Starting with 2010 cohort Alexandria Technical and Community College moved from Greater MN TC to Greater MN CTC comparison group
 Note: Fall 2007 was revised to include students who completed an award of less than 9 credits who were not previously included as completers (and remove awards with dates before cohort start.) Following colleges changed:
 Inver Hills, Lake Superior, Minneapolis, MN West, Normandale, North Hennepin, Hibbing, Itasca, Northwest, Ridgewater, St Paul.

This page intentionally left blank.

Faculty and Staff

Table 31
Fiscal Year 2013 Employee Characteristics

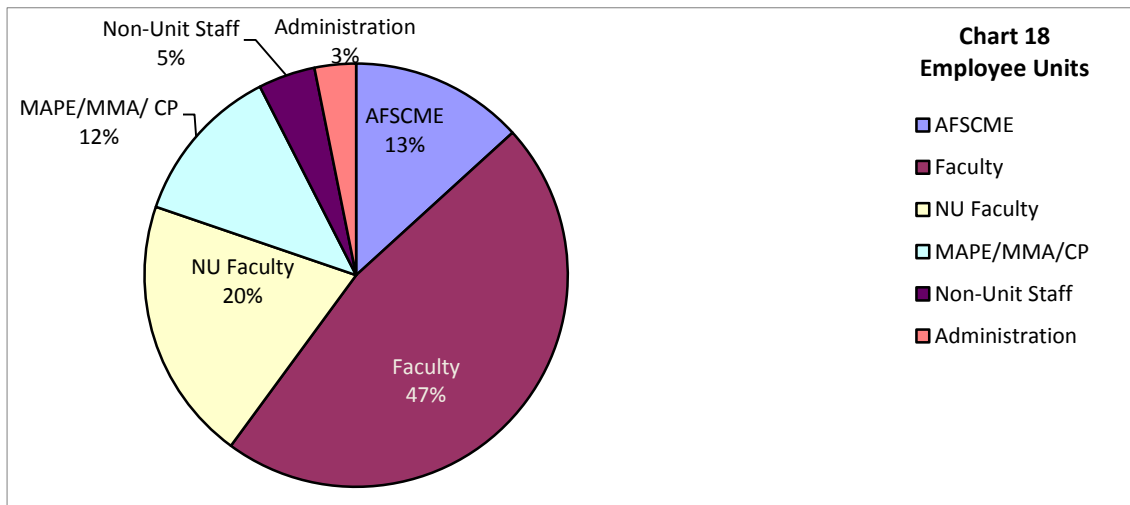
	Unduplicated Annual		FTE	Percent	Average Age	Number Under Age 55	Number Age 55 or Over	Average Years of Service
	Headcount	Percent						
Female	215	46%	131	47%	47	141	74	11
Male	249	54%	148	53%	45	191	58	10
	464		279		46	332	132	10.5

Table 32
Ethnic Status

Employees of Color	4.4%	White	95.6%
--------------------	------	-------	-------

Table 33
Full-time/Part-time Status by Employee Unit - Fiscal Year 2013

AFSCME	Count	Percent
Full-time	49	73%
Part-time	18	27%
Faculty		
Full-time	116	49%
Part-time	121	51%
Non-Unit Faculty		
Full-time		0%
Part-time	102	100%
MAPE/ MMA/Commissioners		
Full-time	58	94%
Part-time	4	6%
Non-Unit Staff		
Full-time	3	14%
Part-time	19	86%
Administration		
Full-time	13	81%
Part-time	3	19%
Total*	506	



*Employees may be in more than one unit (Barg Unit 223 - Student Empl not included).
Source: MnSCU Operation Data, Management Reports&EPM11/HR Payroll/MR0005_WRKStaff/EmployeesAllFunds, 4/28/14
Private data in cells with 5 or fewer employees will not appear.

This page intentionally left blank.

Regional Population and Employment

Table 34
Population Estimates for Region 1 Counties and State

	2008	2009	2010	2011	2012	2013	2008 - 2013 % Change	2003 - 2013 % Change
Kittson County	4,615	4,475	4,552	4,528	4,496	4,503	-2%	-9%
Marshall County	9,648	9,477	9,439	9,473	9,445	9,425	-2%	-6%
Norman County	6,789	6,628	6,852	6,859	6,656	6,631	-2%	-8%
Pennington County	13,694	13,738	13,930	14,018	14,075	14,118	3%	3%
Polk County	30,854	30,817	31,600	31,489	31,429	31,569	2%	2%
Red Lake County	4,111	4,157	4,089	4,105	4,086	4,057	-1%	-6%
Roseau County	16,010	15,921	15,629	15,536	15,484	15,520	-3%	-5%
Region 1	85,721	85,213	86,091	86,008	85,671	85,823	0%	-2%
Minnesota	5,287,976	5,300,942	5,446,490	5,344,861	5,379,139	5,420,380	3%	7%

Source: 2003-2012 data - Minnesota State Demographic Center/2013 data - U.S. Census Bureau: State and County QuickFacts. Data derived from Population Estimates, American Community Survey, Census of Population and Housing, State and County Housing Unit Estimates, County Business Patterns, Nonemployer Statistics, Economic Census, Survey of Business Owners, Building Permits

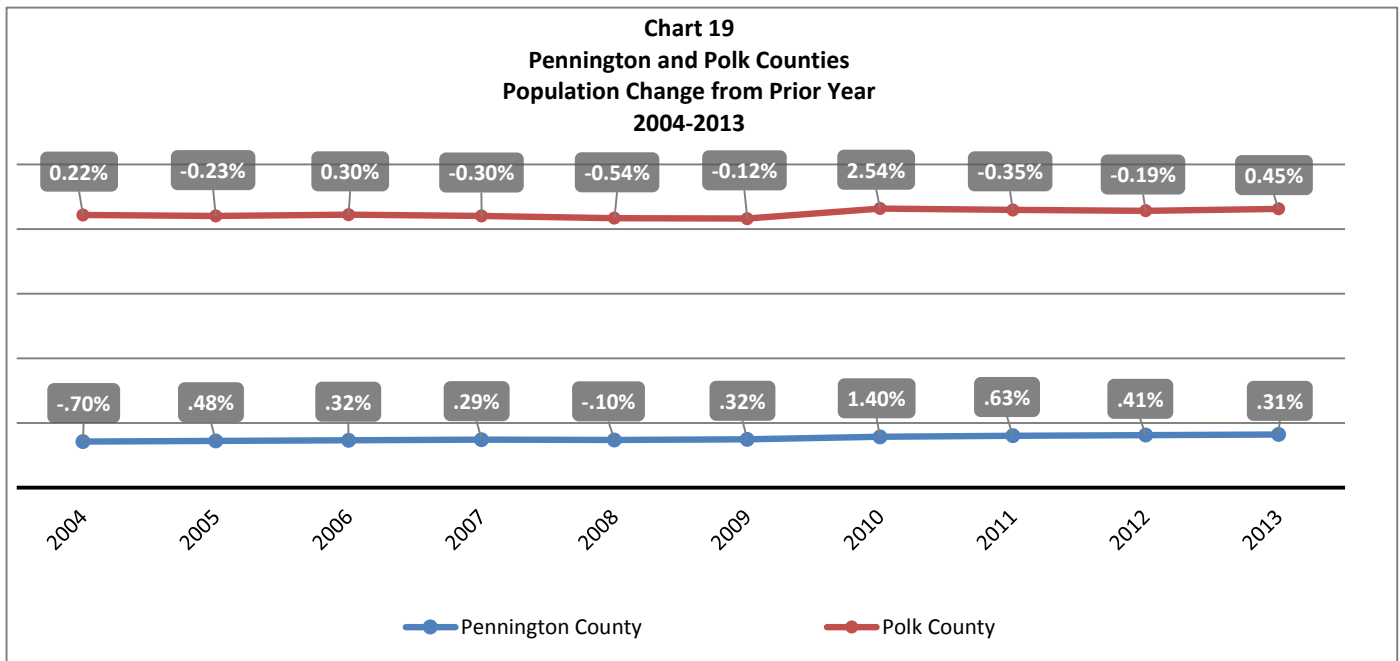
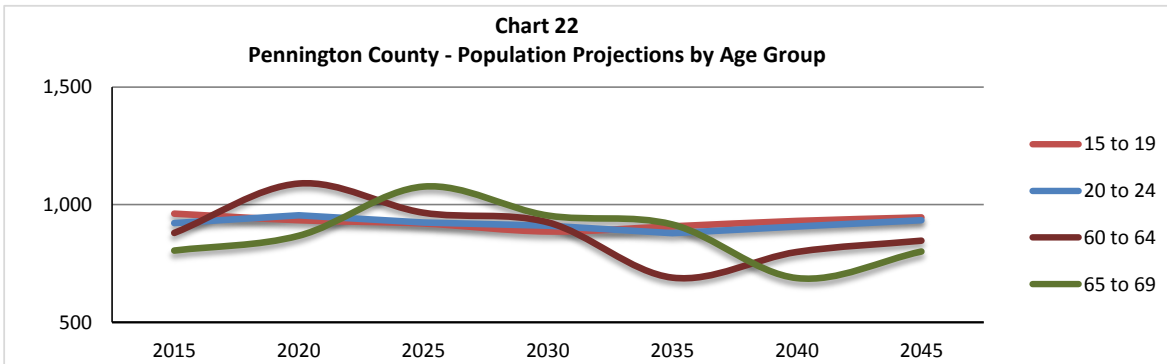
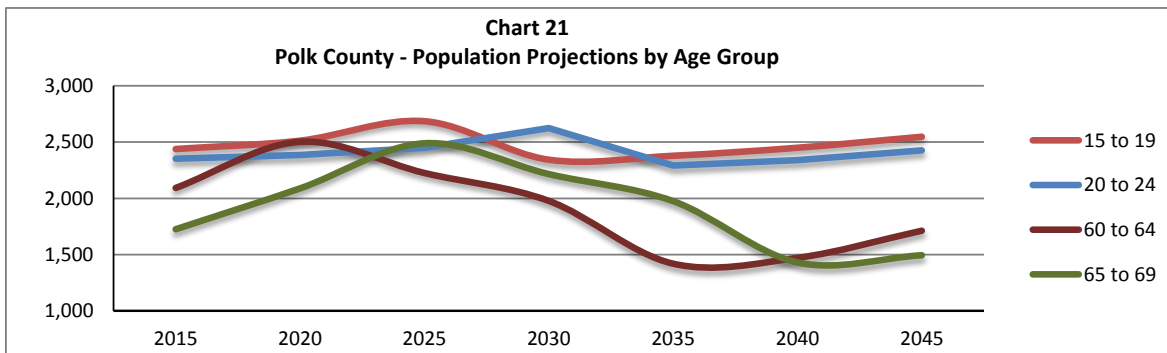
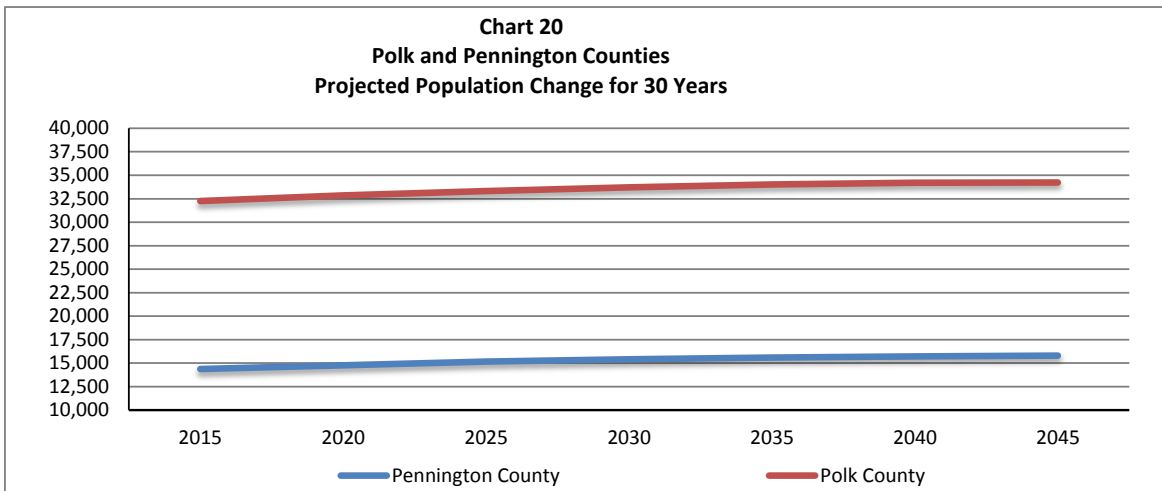


Table 35
Projected 30 Year Population Change for County, Region, and State

County	2015	2020	2025	2030	2035	2040	2045	2015 - 2025 % Change	2015 - 2045 % Change
Kittson County	4,597	4,621	4,654	4,659	4,622	4,537	4,455	1.2%	-3.1%
Marshall County	9,592	9,718	9,838	9,920	9,937	9,893	9,866	2.6%	2.9%
Norman County	7,011	7,091	7,183	7,259	7,307	7,307	7,272	2.5%	3.7%
Pennington County	14,372	14,764	15,153	15,415	15,580	15,715	15,799	5.4%	9.9%
Polk County	32,252	32,844	33,317	33,725	34,024	34,191	34,229	3.3%	6.1%
Red Lake County	4,216	4,312	4,393	4,435	4,435	4,445	4,445	4.2%	5.4%
Roseau County	16,279	16,703	17,221	17,771	18,073	18,260	18,449	5.8%	13.3%
Region 1	88,319	90,053	91,759	93,184	93,978	94,348	94,515	3.9%	7.0%
Minnesota	5,497,933	5,677,582	5,841,619	5,982,601	6,093,729	6,175,801	6,234,930	6.3%	13.4%

Source: MN Dept. of Administration/Office of Geographic Demographic Analysis/State Demographic Center March 2014



Source: MN State Demographic Center, March 2014/MN County Population Projections by Age and Gender, 2015-2045

Table 36
High School Enrollment for Area Districts

	08-09	09-10	10-11	11-12	12-13
Ninth	577	586	598	515	566
Tenth	602	565	582	568	532
Eleventh	602	592	547	562	548
Twelfth	572	556	573	510	539
Total	2354	2299	2301	2155	2185

Source: Minnesota Department of Education, District ADMs 2012-2013

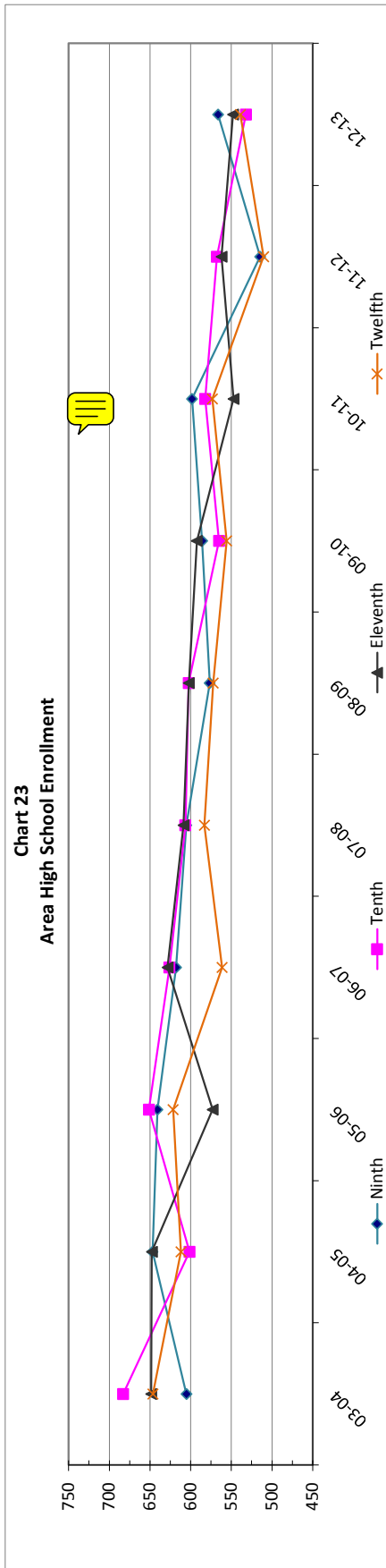


Table 37
2012-2013 Enrollment for Area School Districts (K-12)

	ISD #441	ISD #561	ISD #564	ISD #593	ISD #595	ISD #600	ISD #630	ISD #2176	ISD #2683	Total
Kinder	22	16	129	97	128	22	19	37	28	499
1	29	18	146	94	125	17	22	36	17	504
2	31	19	152	104	127	17	31	31	28	539
3	28	12	137	101	132	25	31	32	35	533
4	38	18	139	83	138	14	35	30	32	527
5	26	18	114	92	126	20	25	31	36	488
6	28	8	155	91	140	17	28	25	39	531
7	32	10	144	100	175	21	35	25	33	525
8	36	20	191	104	118	28	32	27	32	586
9	36	7	163	90	152	22	27	33	37	566
10	28	12	160	85	119	23	25	33	48	532
11	31	8	160	89	147	20	31	29	34	548
12	31	9	146	107	121	14	29	38	43	539
Total	396	174	1935	1237	1698	260	369	407	442	6918

Source: Minnesota Department of Education, District ADMs 2012-2013

Table 38
Average Unemployment Rate

	Pennington County	Polk County	Economic Development Region 1	Minnesota	United States
2002	5.9%	5.7%	6.0%	4.5%	5.8%
2003	6.1%	5.1%	6.3%	4.9%	6.0%
2004	6.5%	5.2%	5.7%	4.6%	5.5%
2005	5.7%	4.6%	5.3%	4.2%	5.1%
2006	5.6%	4.7%	5.6%	4.1%	4.6%
2007	7.0%	4.6%	6.0%	4.7%	4.6%
2008	7.1%	5.0%	5.9%	5.4%	5.8%
2009	9.1%	6.1%	7.7%	8.0%	9.3%
2010	8.1%	5.7%	6.9%	7.4%	9.6%
2011	6.9%	6.2%	6.4%	6.5%	8.9%
2012	5.9%	5.3%	5.6%	5.6%	8.1%
2013	5.7%	4.7%	5.2%	5.1%	7.4%
2014*	8.0%	5.5%	6.5%	5.4%	6.8%

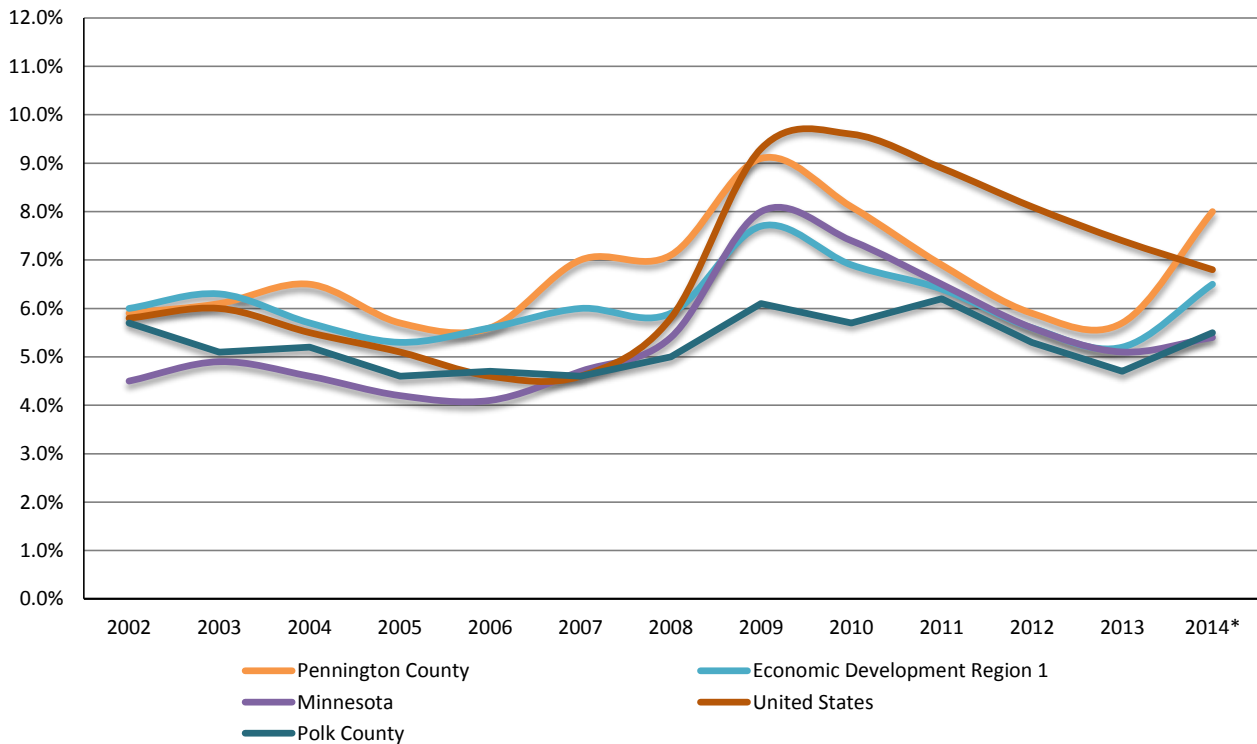
Source: Minnesota Department of Employment and Economic Development/Local Area Unemployment Statistics/MN Counties/Pennington and Polk Counties/Historical Data, Annual Unemployment Rate, 2002-2014, not seasonally adjusted

Unemployed includes those not employed but available for work and actively looking during the last four weeks; those waiting to be called back to a job from which they were laid off; or persons waiting to report to a new wage or salaried job.

Unemployment rate determined by dividing the total number unemployed by the total labor force (sum of employed and unemployed people).

*as of March 2014

Chart 24
Unemployment Rates



Northland Community and Technical College
Community College Survey of Student Engagement (CCSSE) and
Survey of Entering Student Engagement (SENSE) Summary

Review of 2012 CCSSE Results

Benchmark	2008	2010	2012
Active and Collaborative Learning	51.4	49.5	45
Student Effort	46.6	46.1	42.8
Academic Challenge	52.4	48.8	42.6
Student-Faculty Interaction	55.2	50.3	46.7
Support for Learners	50.4	49.6	48.4

Aspects of Highest Student Engagement - 2012

	NCTC	Cohort
Worked with other students on projects during class	51.8%	48.3%
Worked with classmates outside of class to prepare class assignments	25.0%	23.6%
Number of assigned textbooks, manuals, books or book-length packs of course readings	58.4%	56.7%
Providing the financial support you need to afford your education	55.4%	52.3%
Frequency: Academic advising/planning	59.4%	58.6%

Aspects of Lowest Student Engagement - 2012

	NCTC	Cohort
Made a class presentation	20.7%	30.6%
Analyzing the basic elements of an idea, experience, or theory	57.1%	69.1%
Synthesizing and organizing ideas, information, or experiences in new ways	49.8%	61.7%
Number of books read on your own (not assigned) for personal enjoyment or academic enrichment 5 or more	18.6%	23.9%
Number of written papers or reports of any length	48.5%	60.2%

Review of 2014 SENSE Results

Benchmark	2010	2012	2014
Early Connections	55.9	58.3	53.1
High Expectations and Aspirations	41.9	47.3	49.3
Clear Academic Plan and Pathway	53.6	58.1	59.1
Effective Track to College Readiness	49.6	51.2	50.5
Engaged Learning	50.6	45.8	47.9
Academic and Social Support Network	49.5	49.2	47.4

SENSE 2014 Highest Aspects

	NCTC	Cohort
Able to meet with an academic advisor at times convenient for me	79.4%	63.4%
An advisor helped me to select a course of study, program, or major	77.4%	62.1%
An advisor helped me to set academic goals and to create a plan for achieving them	51.0%	42.3%
An advisor helped me to identify the courses I needed to take during my first semester	85.8%	72.2%
A college staff member helped me determine whether I qualified for financial assistance	47.0%	36.5%

SENSE 2014 Lowest Aspects

	NCTC	Cohort
At least instructor learned my name	79.9%	86.9%
Frequency: Asked questions in class or contributed to class discussions	91.1%	92.1%
Frequency: Prepared at least two drafts of a paper or assignment before turning it in	69.0%	71.8%
Frequency: Asked for help from an instructor regarding questions or problems related to a class	72.8%	76.5%
Frequency: Used writing, math, or other skill lab	17.2%	35.8%

Source: Northland Community and Technical College

This page intentionally left blank.