



**NORTHLAND**  
COMMUNITY & TECHNICAL COLLEGE

# Fact Book

Thief River Falls ♦ East Grand Forks



Compiled: February 2015

Update: August 2015

**Prepared by: Northeast Higher Education District  
Office of Institutional Research**

Tracey Roy, Director  
1851 East Highway 169  
Grand Rapids, MN 55744  
(218) 322-2408  
tracey.roy@itascacc.edu

*and*

Billie Sikkila  
1001 West Chestnut Street  
Virginia, MN 55792  
(218) 471-0011  
b.sikkila@mesabirange.edu



**East Grand Forks Campus**  
2022 Central Avenue NE  
East Grand Forks, MN 56721

**Thief River Falls Campus**  
1101 Highway One East  
Thief River Falls, MN 56701

**Aerospace Site**  
13892 Airport Drive  
Thief River Falls, MN 56701

**Roseau Site**  
121 Center St E. Suite 200  
Roseau, MN 56751

Phone: 1.800.959.6282  
[www.northlandcollege.edu](http://www.northlandcollege.edu)

---

## Fact Book

The Northland Community & Technical College Fact Book provides general statistical and descriptive information about the college which may be useful to those engaged in planning, assessment, preparing reports, writing grant proposals or other endeavors within the college. The Fact Book is a reference tool that provides a picture of Northland for fiscal year 2015 by using fall 2014 data, along with historical trend data. While not all available data has been gathered, the data accurately represents the major areas of the college.

Data may differ from other college and state reports. Such variances result from source of information used, the date on which the report was generated or the reporting period included in the data. Trends should be tracked using identical data sources over time.

Data reflects student enrollment by either full-year equivalent (FYE), full-time equivalent (FTE), or headcount:

### **Student Full-Year Equivalent**

A full-time enrollment equivalent for a year – total credits taken by all students over the academic year divided by 30 (the number of credits considered to be a full-time course load over the duration of the year).

### **Student Full-Time Equivalent**

Student full-time equivalent for a semester – total credits taken during the semester for all students divided by 15.

### **Headcount**

For this purpose, the headcount is the actual number of students enrolled at the 30<sup>th</sup> day of Fall Semester.

# Northland Community & Technical College Mission and Vision

## MISSION

*Northland Community & Technical College is dedicated to creating a quality learning environment for all learners through partnership with students, communities, businesses, and other educational institutions.*

## VISION

*Northland Community & Technical College will be widely recognized as a progressive leader in community and technical college education, responsive to the needs of our learners through the use of partnerships, innovation, and technology.*

## INSTITUTIONAL LEARNER OUTCOMES

1. **Communication Skills.** Students will be able to **communicate** effectively with a variety of audiences using verbal, non-verbal, listening, writing, interpersonal, and team skills.
2. **Critical Thinking Skills.** Students will be able to **separate** fact and opinion, recognize distinct points of view, and **analyze** and evaluate information, including mathematical information. Students will be able to **acknowledge** diverse values, and **employ** creativity and effective problem-solving skills in a variety of situations. Students will be able to **understand** implications and consequences of decision-making.
3. **Global and Civic Responsibility.** Students will be able to **interact** in ways that exhibit a sense of community and be sensitive to issues of cultural and global diversity, and understand the importance of exercising civic responsibility on local, regional, and national levels. Students will **understand** and **respect** the need to give service to others. Students will **respect** and **care** for our natural environment.
4. **Information and Applied Technology.** Students will be able to **access** and **analyze** appropriate information and/or resources using technology to solve problems.
5. **Personal Development.** Students will **develop** professional attitudes and habits of punctuality, honesty, respect, accountability, leadership, professional and personal integrity, and self-directedness while contributing to personal and group goals.

## Accreditation

Northland Community and Technical College has maintained accreditation by the Higher Learning Commission of the North Central Association ([www.ncahlc.org](http://www.ncahlc.org)) since 1976.

Source: [http://www.ncahlc.org/component/com\\_directory/Action,ShowBasic/Itemid,/instid,1794](http://www.ncahlc.org/component/com_directory/Action,ShowBasic/Itemid,/instid,1794)

# Northland Community and Technical College Fact Book

## TABLE OF CONTENTS

At-A-Glance Summary.....	1
Enrollment Trends.....	2-4
Fiscal Year Headcounts 2005 to 2014 (Table 1).....	2
Historic & Projected Enrollment Trends (Table 2).....	2
Headcount and FTE - 10 <sup>th</sup> Day - Fall Terms (Table 3).....	3
Headcount and FTE - 30 <sup>th</sup> Day - Fall Terms (Table 4).....	3
Full-time/Part-time - 30 <sup>th</sup> Day - Fall Terms (Table 5).....	3
Average Credit Load by Term (Table 6).....	4
Enrollment Trends (Chart 5).....	4
Student Demographic and Academic Profile.....	5-12
Gender Distribution (Table 7).....	5
Age Groups (Table 8).....	5
Gender by Age Group – Fall 2014 (Table 9).....	5
Traditional vs. Non-Traditional Age Students (Table 10).....	6
Average Age (Table 11).....	6
Race/Ethnicity (Table 12).....	7
Ethnicity of New Students (Table 13).....	7
Student Level (Table 14).....	8
New Students (Table 15).....	8
New Students by Admission Status (Table 16).....	9
New/Return Students by Full-/Part-time Status - Fall 2014 (Table 17).....	9
County of Residence (Table 18).....	10
High School Attended of New Students (Table 19).....	11
Financial Aid Comparison (Table 20).....	12
Students Receiving Financial Aid (Table 21).....	12
Academic Progress and Degrees Earned.....	13-24
Discipline Summary by FYE – 5 Year Comparison (Table 22).....	13
Fall Majors Headcount by CIP Code – 5 Year Comparison (Table 23).....	16
Fall Majors FYE by CIP Code – 5 Year Comparison (Table 24).....	18
On-line Enrollment (Table 25).....	19
Fall to Following Fall Retention – New, Full-time Students (Chart 14).....	20
Fall to Spring Retention – New, Full-time Students (Chart 15).....	20
Enrollment by Program (Table 26).....	21
Degrees Awarded by Fiscal Year (Table 27).....	21
Persistence and Completion Rates for Fall 2010 Cohort (Table 28).....	22
Persistence and Completion Rates for Fall 2011 Cohort (Table 29).....	23
IPEDS 3-Year Graduation & Transfer-out Rates (Table 30).....	24

Faculty and Staff .....	25
Employee Headcount (Table 31).....	25
Employee Full-Time Equivalent (Table 32) .....	25
Employee Diversity (Table 33) .....	25
Regional Population and Employment .....	26-29
Population Estimates for Region 1 2009-2014 (Table 34) .....	26
Projected 30-Year Population Change (Table 35).....	27
Polk County Population Projections by Age Group (Chart 20) .....	27
Pennington County Population Projections by Age Group (Chart 21).....	27
High School Enrollment for Area Districts (Table 36) .....	28
2014-2015 Enrollment for Area School Districts (K-12) (Table 37).....	28
Average Unemployment Rate (Table 38).....	29
CCSSE/SENSE Benchmark Summary for NCTC .....	30

# *At a Glance*

## Northland Community & Technical College

*5-Year Comparison - Fall 30th Day Enrollment*

	Fall 10	Fall 14
<b>Headcount</b>	<b>4,023</b>	<b>3,584</b>
<b>FTE</b>	<b>2,644.2</b>	<b>2,231.9</b>
<b>New Students</b>	<b>38%</b>	<b>39%</b>
<b>Gender</b>		
Female	57%	58%
Male	42%	41%
<b>Student Load</b>		
Full-time	49%	41%
Part-time	51%	59%
<b>Average Credit Load</b>		
Full-time	14.2	14.5
Part-time	5.7	5.7
All Students	9.9	9.3
<b>Admission Category</b>		
High School	9%	14%
Undergraduate Regular	42%	35%
Undergraduate Transfer	37%	37%
Undergraduate Other	12%	15%
<b>Average Age</b>		
Full-time	23.8	23.9
Part-time	29.0	26.9
All Students	26.5	25.6
<b>Underrepresented</b>	58%	50%
<b>Students of Color</b>	15%	16%
<b>Pell Eligible</b>	46%	35%
<b>First Generation Minnesota</b>	23%	20%
<b>First Generation Federal (TRIO)</b>	63%	59%

Source: MnSCU ISRS Operational Data; Fall 30th Day Enrollment, unknowns are included in the denominator  
 Definitions: FTE - full time equivalent per semester (total credits/15); full time student = 12 or more credits; Pell Eligible - receipt of or eligibility for federal need-based grant; First Generation Minnesota - neither parent received postsecondary education; First Generation Federal - neither parent has bachelor's degree, Student of Color - all racial-ethnic categories excluding White, Nonresident Alien and unknown status; Underrepresented Students - ONE or more attributes: student of color, Pell eligible, or first generation Minnesota.

This page intentionally left blank.

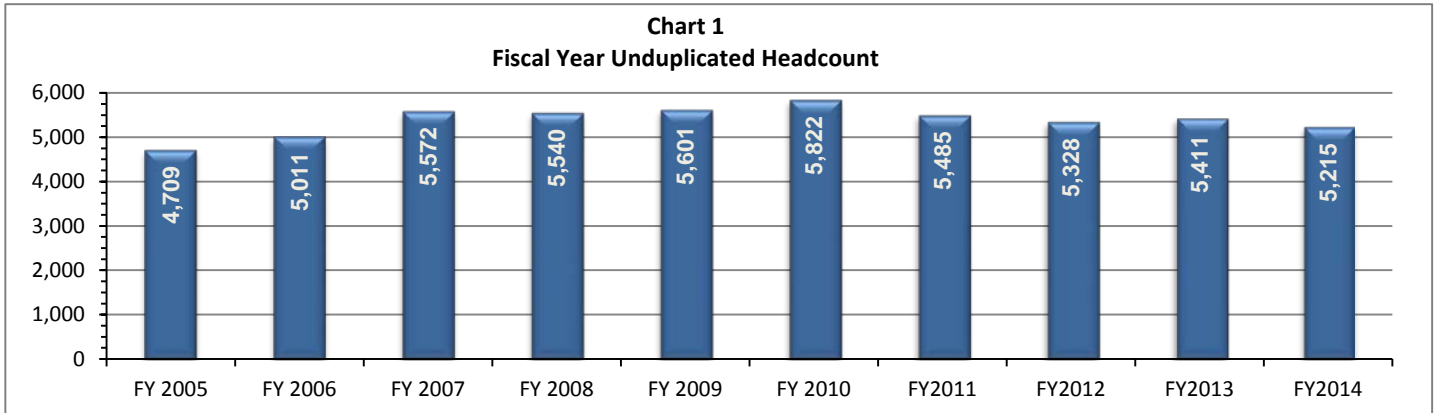


## Enrollment Trends

**Table 1**  
**Fiscal Year Headcounts 2005 to 2014**

	FY 2005	FY 2006	FY 2007	FY 2008	FY 2009	FY 2010	FY2011	FY2012	FY2013	FY2014
Summer I	1,069	1,037	1,097	1,055	1,120	1,204	1,182	1,025	882	923
Fall	3,767	3,956	4,373	5,156	5,380	5,752	5,668	5,360	5,497	5,092
Spring	4,056	4,430	4,466	5,219	5,352	5,703	5,429	5,187	5,268	5,026
<b>FY Duplicated HC</b>	<b>8,892</b>	<b>9,423</b>	<b>9,936</b>	<b>11,430</b>	<b>11,852</b>	<b>12,659</b>	<b>12,279</b>	<b>11,572</b>	<b>11,647</b>	<b>11,041</b>
<b>FY Unduplicated HC</b>	<b>4,709</b>	<b>5,011</b>	<b>5,572</b>	<b>5,540</b>	<b>5,601</b>	<b>5,822</b>	<b>5,485</b>	<b>5,328</b>	<b>5,411</b>	<b>5,215</b>

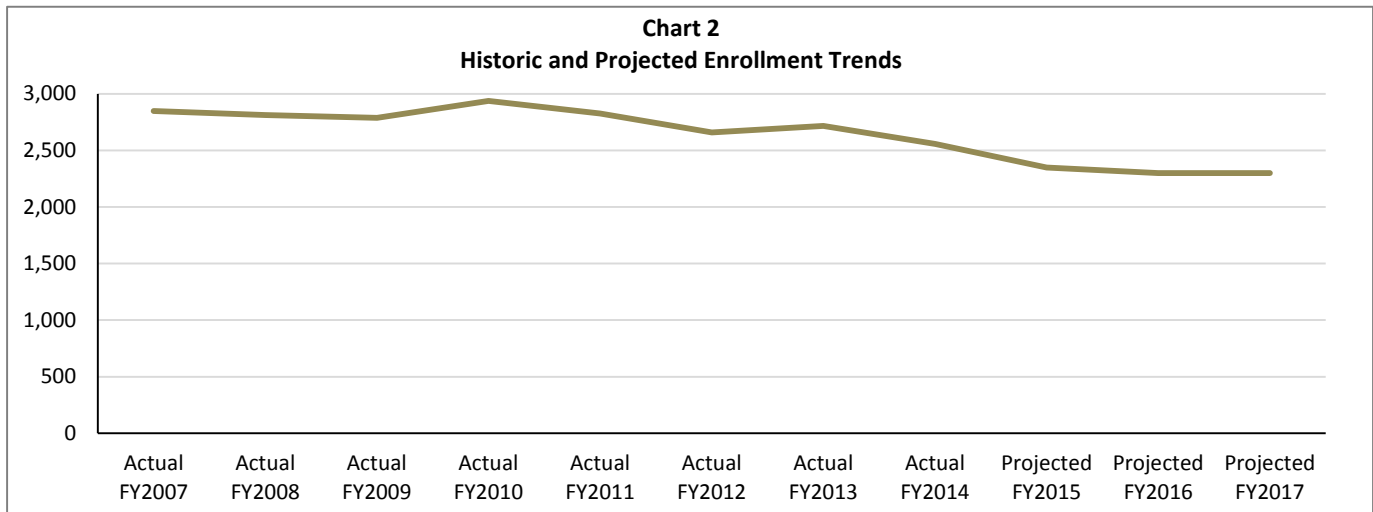
Source: MnSCU ISRS Operational Data/ITS Management Reports/Enrollment/FYE by Campus



**Table 2**  
**Historic & Projected Enrollment Trends**

	Actual FY2007	Actual FY2008	Actual FY2009	Actual FY2010	Actual FY2011	Actual FY2012	Actual FY2013	Actual FY2014	Projected FY2015	Projected FY2016	Projected FY2017
Northland	2,850	2,814	2,788	2,938	2,828	2,659	2,717	2,558	2,350	2,300	2,300

Source: MnSCU Finance Division as of February 2015



**Table 3**  
**Headcount and FTE - 10th Day - Fall Terms**

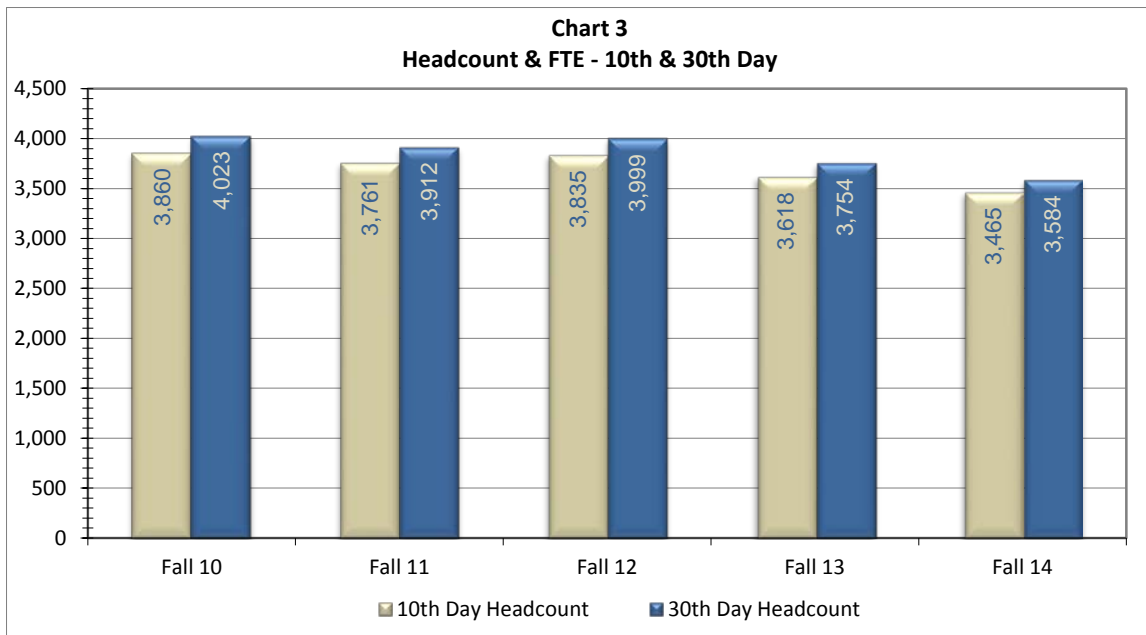
	Fall 10	Fall 11	Fall 12	Fall 13	Fall 14
Headcount	3,860	3,761	3,835	3,618	3,465
FTE	2,600	2,463	2,546	2,415	2,199

Source: 10th Day Enrollment Tables, ST\_03/MnSCU ISRS Operational Data, 10.31.14

**Table 4**  
**Headcount and FTE - 30th Day - Fall Terms**

	Fall 10	Fall 11	Fall 12	Fall 13	Fall 14
Headcount	4,023	3,912	3,999	3,754	3,584
FTE	2,644	2,505	2,593	2,452	2,232

Source: 30th Day Enrollment Tables, ST\_03/MnSCU ISRS Operational Data, 10.31.14



**Table 5**  
**Full-time/Part-time - 30th Day - Fall Terms**

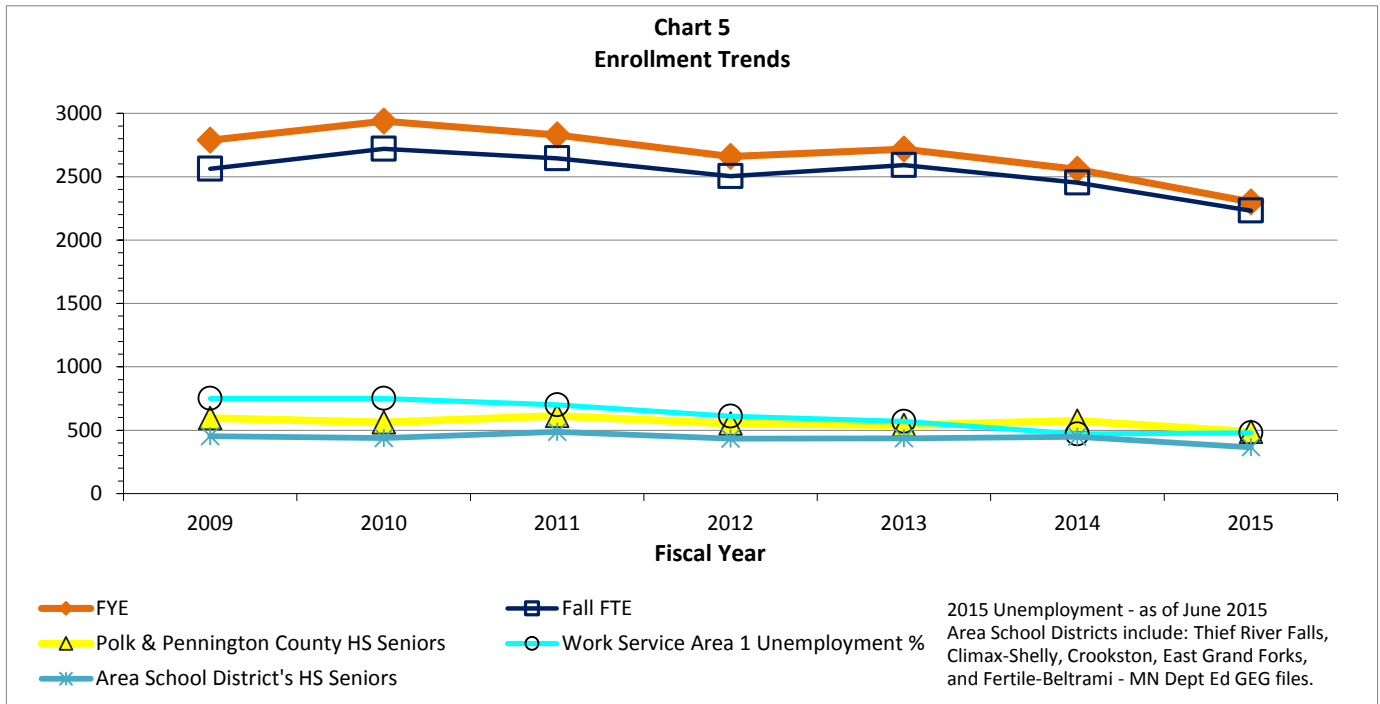
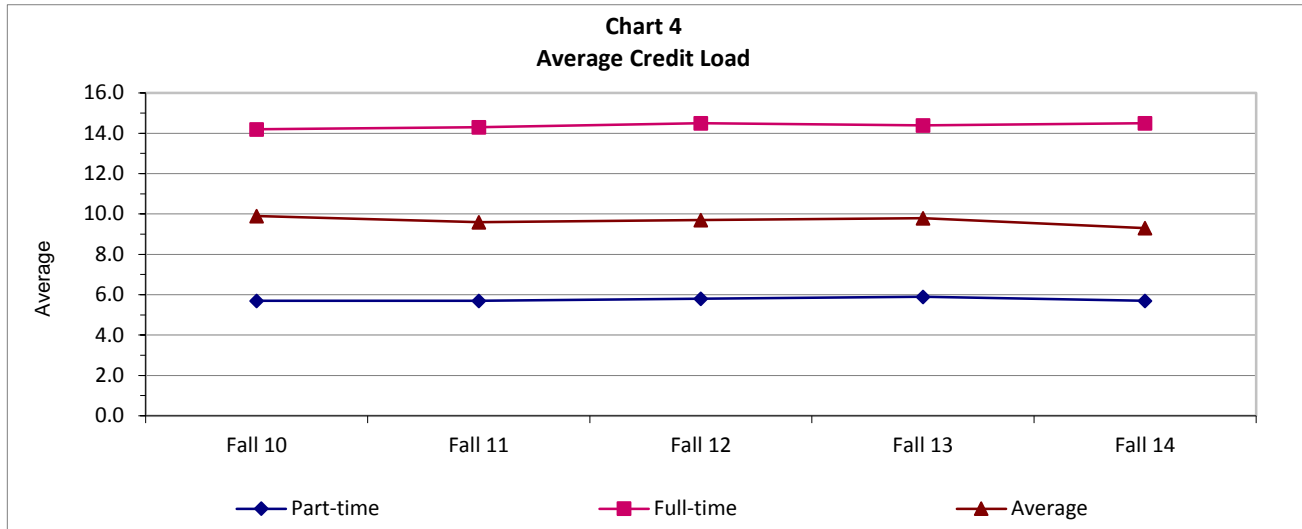
	Fall 10		Fall 11		Fall 12		Fall 13		Fall 14	
	Count	Percent	Count	Percent	Count	Percent	Count	Percent	Count	Percent
Part-time	2,064	51%	2,139	55%	2,183	55%	2,035	54%	2,108	59%
Full-time	1,959	49%	1,773	45%	1,816	45%	1,719	46%	1,476	41%
<b>Total</b>	<b>4,023</b>		<b>3,912</b>		<b>3,999</b>		<b>3,754</b>		<b>3,584</b>	

Source: 30th Day Enrollment Tables, ST\_03/MnSCU ISRS Operational Data, 10.31.14

**Table 6**  
**Average Credit Load by Term**

	Fall 10 Mean	Fall 11 Mean	Fall 12 Mean	Fall 13 Mean	Fall 14 Mean
Part-time	5.7	5.7	5.8	5.9	5.7
Full-time	14.2	14.3	14.5	14.4	14.5
Average	9.9	9.6	9.7	9.8	9.3

Source: 30th Day Enrollment Tables, ST\_03/MnSCU ISRS Operational Data, 10.31.14



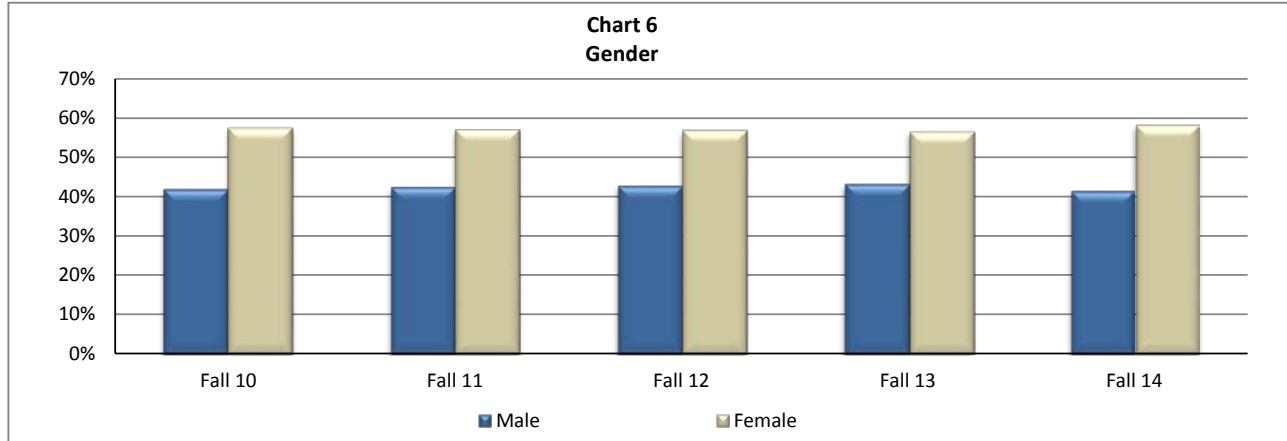
This page intentionally left blank.

## Student Demographic and Academic Profile

**Table 7**  
**Gender Distribution**

	Fall 10		Fall 11		Fall 12		Fall 13		Fall 14	
	Count	Percent	Count	Percent	Count	Percent	Count	Percent	Count	Percent
Male	1685	42%	1662	42%	1710	43%	1621	43%	1487	41%
Female	2313	57%	2236	57%	2275	57%	2120	56%	2084	58%
Unknown	25	1%	14	0%	14	0%	13	0%	13	0%
<b>Total</b>	<b>4023</b>		<b>3912</b>		<b>3999</b>		<b>3754</b>		<b>3584</b>	

Source: 30th Day Enrollment Tables, ST\_03/MnSCU ISRS Operational Data, 10.31.14



**Table 8**  
**Age Groups**

	Fall 10		Fall 11		Fall 12		Fall 13		Fall 14	
	Count	Percent	Count	Percent	Count	Percent	Count	Percent	Count	Percent
Under 18	357	9%	388	10%	482	12%	451	12%	512	14%
18-20	1149	29%	1053	27%	1182	30%	1128	30%	991	28%
21-24	864	21%	832	21%	801	20%	758	20%	742	21%
25-29	558	14%	541	14%	534	13%	471	13%	449	13%
30-39	497	12%	503	13%	482	12%	463	12%	457	13%
40 and older	560	14%	551	14%	500	12%	453	12%	404	11%
No response	38	1%	44	1%	20	0%	30	1%	29	1%
<b>Total</b>	<b>4023</b>		<b>3912</b>		<b>4001</b>		<b>3754</b>		<b>3584</b>	

Source: 30th Day Enrollment Tables, ST\_03/MnSCU ISRS Operational Data, 10.31.14

**Table 9**  
**Gender by Age Group - Fall 2014**

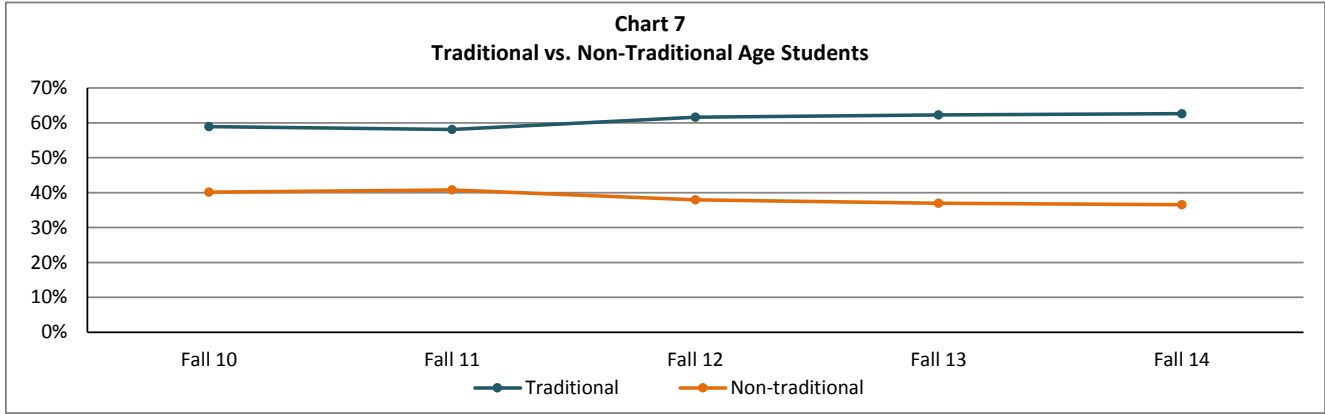
	Female		Male		Unknown		Total	
	Count	Percent	Count	Percent	Count	Percent	Count	Percent
Under 18	325	16%	182	12%	5	38%	512	14%
18-20	549	26%	439	30%	3	23%	991	28%
21-24	470	23%	271	18%	1	8%	742	21%
25-29	272	13%	175	12%	2	15%	449	13%
30-39	273	13%	183	12%	1	8%	457	13%
40 and older	191	9%	212	14%	1	8%	404	11%
No response	4	0%	25	2%		0%	29	1%
<b>Total</b>	<b>2084</b>		<b>1487</b>		<b>13</b>		<b>3584</b>	

Source: 30th Day Enrollment Tables, ST\_03/MnSCU ISRS Operational Data, 10.31.14

**Table 10**  
**Traditional Age (24 or less) vs. Non-Traditional Age Students**

	Fall 10		Fall 11		Fall 12		Fall 13		Fall 14	
	Count	Percent	Count	Percent	Count	Percent	Count	Percent	Count	Percent
Traditional	2370	59%	2273	58%	2463	62%	2337	62%	2245	63%
Non-traditional	1615	40%	1595	41%	1516	38%	1387	37%	1310	37%
No response	38	1%	44	1%	20	1%	30	1%	29	1%
<b>Total</b>	<b>4023</b>		<b>3912</b>		<b>3999</b>		<b>3754</b>		<b>3584</b>	

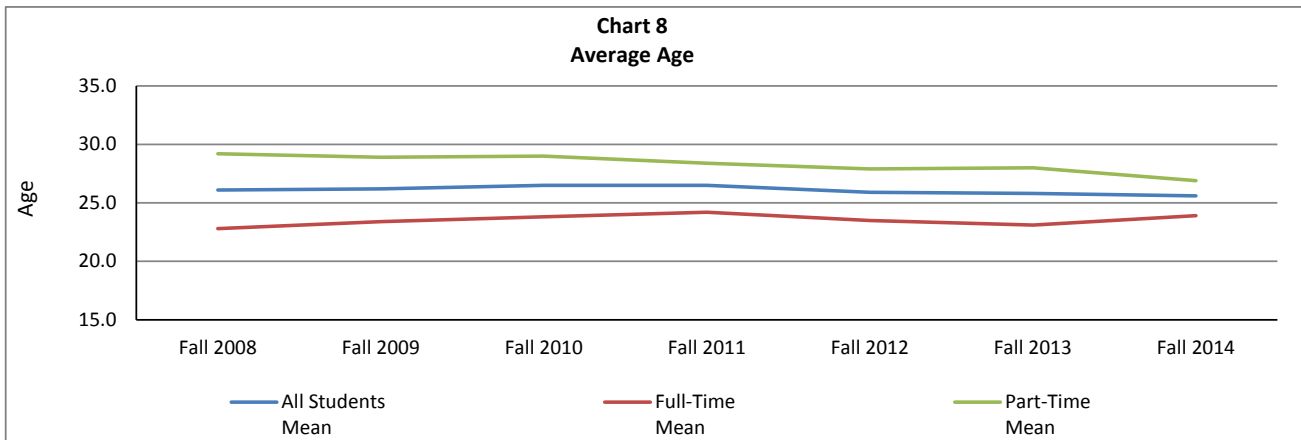
Source: 30th Day Enrollment Tables, ST\_03/MnSCU ISRS Operational Data, 10.31.14



**Table 11**  
**Average Age**

	All Students Mean	Full-Time Mean	Part-Time Mean
Fall 2008	26.1	22.8	29.2
Fall 2009	26.2	23.4	28.9
Fall 2010	26.5	23.8	29.0
Fall 2011	26.5	24.2	28.4
Fall 2012	25.9	23.5	27.9
Fall 2013	25.8	23.1	28.0
Fall 2014	25.6	23.9	26.9

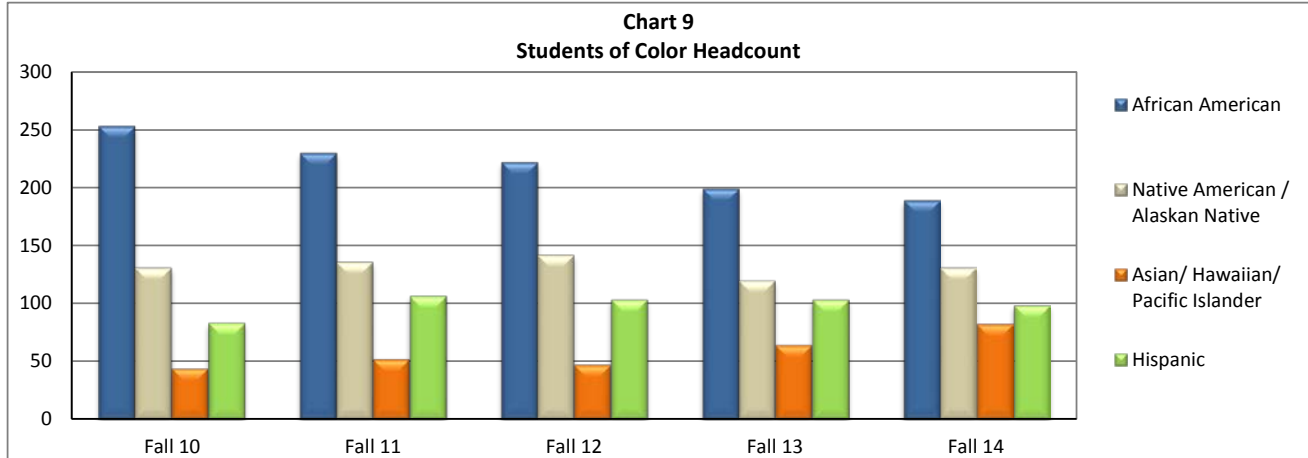
Source: 30th Day Enrollment Tables, ST\_03/MnSCU ISRS Operational Data, 10.31.14



**Table 12**  
**Race/Ethnicity**

	Fall 10		Fall 11		Fall 12		Fall 13		Fall 14	
	Count	Percent	Count	Percent	Count	Percent	Count	Percent	Count	Percent
African American	253	6%	230	6%	222	6%	199	5%	189	5%
Native American / Alaskan Native	131	3%	136	3%	142	4%	120	3%	131	4%
Asian/ Hawaiian/ Pacific Islander	44	1%	52	1%	47	1%	64	2%	82	2%
Hispanic	83	2%	106	3%	103	3%	103	3%	98	3%
White	3413	85%	3327	85%	3407	85%	3182	85%	3006	84%
Unknown	99	2%	61	2%	78	2%	86	2%	78	2%
<b>Total</b>	<b>4023</b>		<b>3912</b>		<b>3999</b>		<b>3754</b>		<b>3584</b>	

Source: 30th Day Enrollment Tables, ST\_03/MnSCU ISRS Operational Data, 10.31.14



**Table 13**  
**Ethnicity of New\* Students**

	Fall 10		Fall 11		Fall 12		Fall 13		Fall 14	
	Count	Percent	Count	Percent	Count	Percent	Count	Percent	Count	Percent
African American	94	6%	101	7%	95	6%	95	7%	85	6%
Native American / Alaskan Native	55	4%	64	4%	60	4%	52	4%	58	4%
Hispanic/Asian/Hawaiian/ Pacific Islander	47	3%	64	4%	65	4%	63	4%	89	6%
White	1,258	83%	1,204	82%	1,379	84%	1,173	82%	1,135	80%
Unknown	55	4%	43	3%	50	3%	42	3%	44	3%
<b>Total</b>	<b>1,509</b>		<b>1,476</b>		<b>1,649</b>		<b>1,425</b>		<b>1,411</b>	

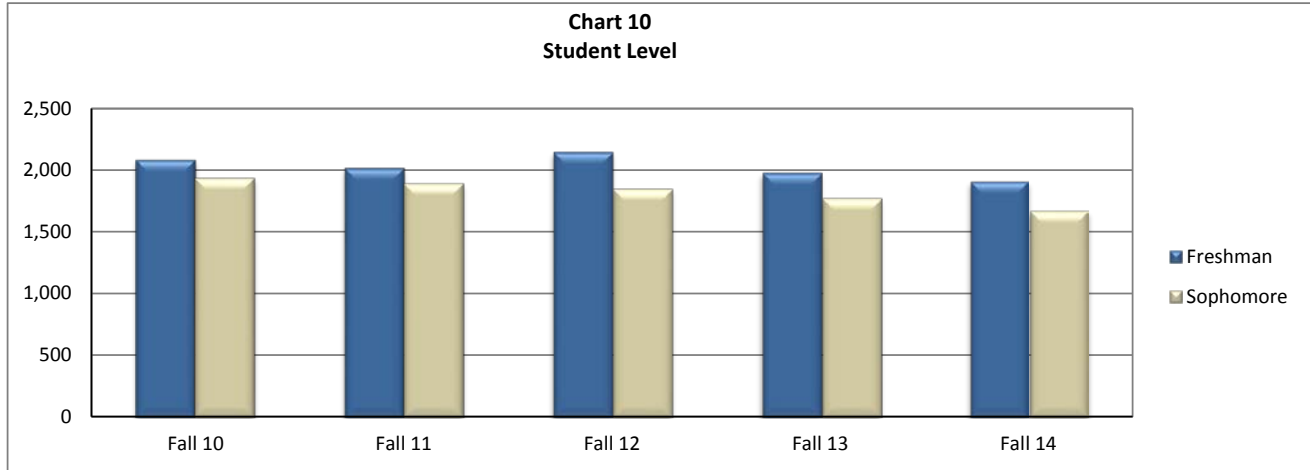
Source: 30th Day Enrollment Tables, ST\_03/MnSCU ISRS Operational Data, 10.31.14

\*New student in the summer or fall.

**Table 14**  
**Student Level**

	Fall 10		Fall 11		Fall 12		Fall 13		Fall 14	
	Count	Percent	Count	Percent	Count	Percent	Count	Percent	Count	Percent
Freshman	2,085	52%	2,018	52%	2,148	54%	1,980	53%	1,911	53%
Sophomore	1,938	48%	1,894	48%	1,851	46%	1,774	47%	1,673	47%
<b>Total</b>	<b>4,023</b>		<b>3,912</b>		<b>3,999</b>		<b>3,754</b>		<b>3,584</b>	

Source: 30th Day Enrollment Tables, ST\_03/MnSCU ISRS Operational Data, 10.31.14

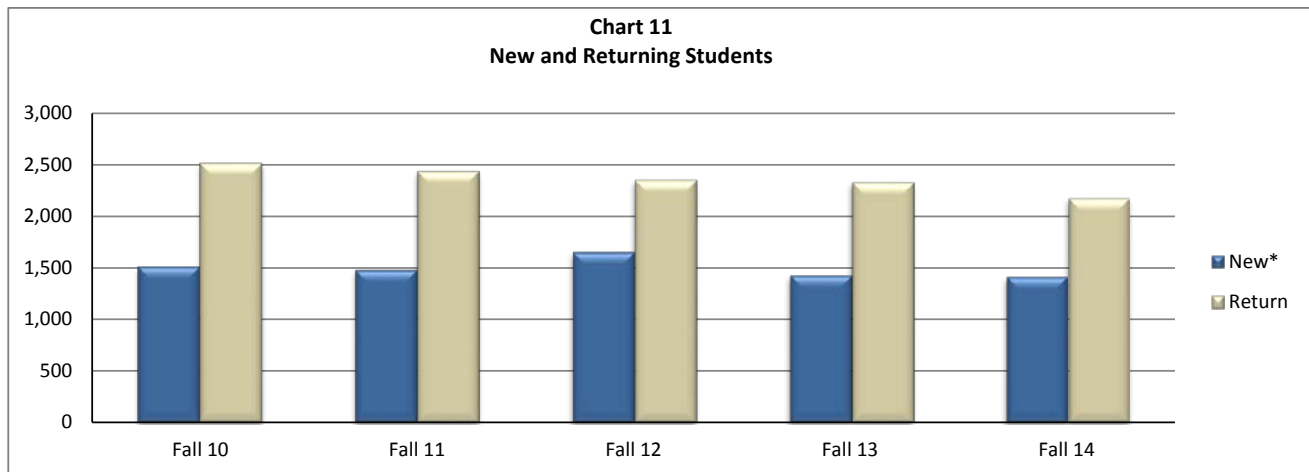


**Table 15**  
**New Students**

	Fall 10		Fall 11		Fall 12		Fall 13		Fall 14	
	Count	Percent	Count	Percent	Count	Percent	Count	Percent	Count	Percent
New*	1,509	38%	1,476	38%	1,649	41%	1,425	38%	1,411	39%
Return	2,514	62%	2,436	62%	2,350	59%	2,329	62%	2,173	61%
<b>Total</b>	<b>4,023</b>		<b>3,912</b>		<b>3,999</b>		<b>3,754</b>		<b>3,584</b>	

Source: 30th Day Enrollment Tables, ST\_03/MnSCU ISRS Operational Data, 10.31.14

\*New student in the summer or fall.



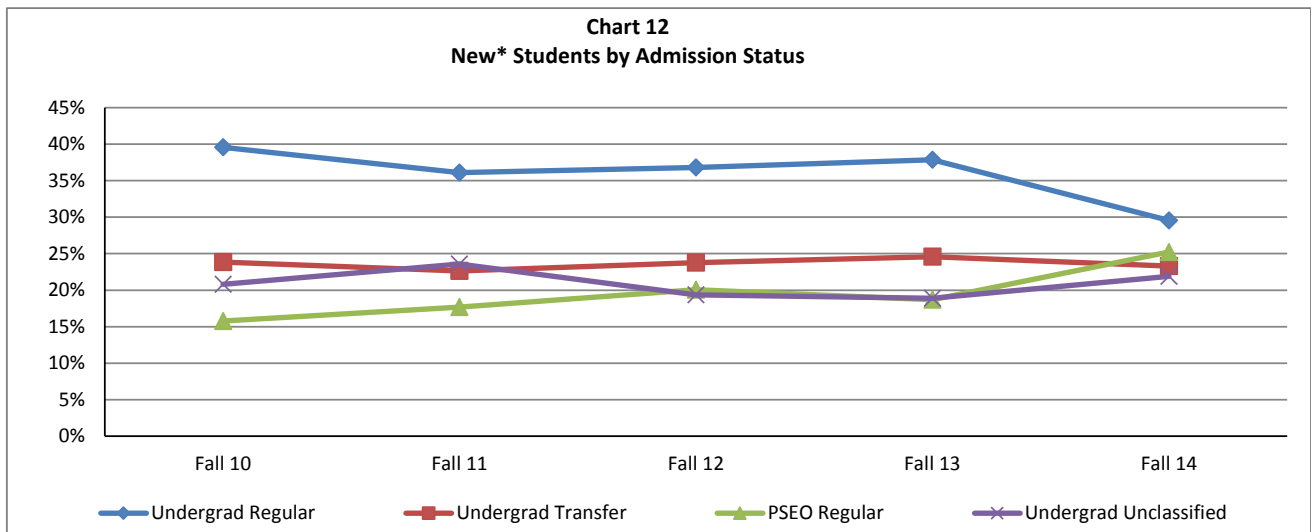


**Table 16**  
**New/Returning Students by Admission Status**

	Fall 10		Fall 11		Fall 12		Fall 13		Fall 14	
	Count	Percent	Count	Percent	Count	Percent	Count	Percent	Count	Percent
<b>New* Students</b>										
Undergrad Regular	597	40%	533	36%	607	37%	539	38%	417	30%
Undergrad Transfer	360	24%	334	23%	392	24%	350	25%	329	23%
PSEO Regular	238	16%	261	18%	331	20%	266	19%	356	25%
Undergrad Unclassified	314	21%	348	24%	319	19%	269	19%	309	22%
<b>Total New</b>	<b>1,509</b>		<b>1,476</b>		<b>1,649</b>		<b>1,424</b>		<b>1,411</b>	
<b>Returning Students</b>										
Undergrad Regular	1101	44%	1031	42%	927	39%	851	37%	819	38%
Undergrad Transfer	1071	43%	1052	43%	1032	44%	1014	44%	909	42%
PSEO Regular	106	4%	101	4%	118	5%	178	8%	135	6%
Undergrad Unclassified	236	9%	252	10%	273	12%	286	12%	310	14%
<b>Total Returning</b>	<b>2,514</b>		<b>2,436</b>		<b>2,350</b>		<b>2,329</b>		<b>2,173</b>	
<b>Total All</b>	<b>4,023</b>		<b>3,912</b>		<b>3,999</b>		<b>3,753</b>		<b>3,584</b>	

Source: 30th Day Enrollment Tables, ST\_03/MnSCU ISRS Operational Data, 2.25.15

\*New student in the summer or fall.



**Table 17**  
**New/Return Students by Full/Part-time Status - Fall 2014**

	Part-time		Full-time		Total	
	Count	Percent	Count	Percent	Count	Percent
New*	831	39%	580	39%	1,411	39%
Returning	1,277	61%	896	61%	2,173	61%
<b>Total</b>	<b>2,108</b>		<b>1,476</b>		<b>3,584</b>	

Source: 30th Day Enrollment Tables, ST\_03/MnSCU ISRS Operational Data, 10.31.14

\*New student in the summer or fall.

This page intentionally left blank.

**Table 18**  
**County of Residence**

	Fall 10		Fall 11		Fall 12		Fall 13		Fall 14	
	Count	Percent	Count	Percent	Count	Percent	Count	Percent	Count	Percent
Polk	396	10%	465	12%	521	13%	509	14%	481	13%
Pennington	339	8%	283	7%	263	7%	295	8%	332	9%
Marshall	179	4%	144	4%	144	4%	144	4%	190	5%
Roseau	178	4%	166	4%	157	4%	147	4%	154	4%
Red Lake	74	2%	71	2%	64	2%	76	2%	75	2%
Kittson	59	1%	55	1%	52	1%	65	2%	74	2%
Norman	43	1%	54	1%	61	2%	63	2%	64	2%
Clearwater	60	1%	57	1%	52	1%	59	2%	58	2%
Hennepin	59	1%	53	1%	53	1%	36	1%	56	2%
Mahnomen	32	1%	24	1%	40	1%	51	1%	51	1%
Clay	73	2%	72	2%	69	2%	58	2%	48	1%
Beltrami	39	1%	39	1%	33	1%	31	1%	46	1%
Becker	23	1%	23	1%	20	1%	28	1%	26	1%
Otter Tail	51	1%	46	1%	31	1%	29	1%	24	1%
Hubbard	30	1%	25	1%	18	0%	27	1%	14	0%
Ramsey	8	0%	4	0%	8	0%	9	0%	14	0%
Dakota	10	0%	18	0%	19	0%	14	0%	13	0%
Stearns	7	0%	9	0%	7	0%	13	0%	13	0%
St. Louis	7	0%	12	0%	11	0%	14	0%	12	0%
Lake of the Woods	12	0%	13	0%	18	0%	13	0%	11	0%
Crow Wing	11	0%	10	0%	12	0%	11	0%	10	0%
Itasca	4	0%	6	0%	11	0%	7	0%	10	0%
Koochiching	6	0%	7	0%	6	0%	4	0%	10	0%
Anoka	22	1%	16	0%	11	0%	9	0%	9	0%
Wright									9	0%
Washington	3	0%	5	0%	4	0%	12	0%	7	0%
Cass	4	0%	3	0%	6	0%	6	0%	6	0%
Douglas	6	0%	6	0%	7	0%	8	0%	6	0%
Wadena	9	0%	9	0%	8	0%	6	0%	3	0%
Wilkin	4	0%	5	0%	4	0%	4	0%	3	0%
Other MN*	76	2%	75	2%	67	2%	59	2%	55	2%
North Dakota	987	25%	1013	26%	1169	29%	1137	30%	1008	28%
Out of State	171	4%	158	4%	155	4%	168	4%	136	4%
Unknown (MN)	231	6%	181	5%	141	4%	118	3%	82	2%
Unknown	810	20%	785	20%	757	19%	524	14%	474	13%
<b>Total</b>	<b>4,023</b>		<b>3,912</b>		<b>3,999</b>		<b>3,754</b>		<b>3,584</b>	

Source: 30th Day Enrollment Tables, ST\_03/MnSCU ISRS Operational Data, 10.31.14

2010 "Other" includes 38 counties

2012 "Other" includes 28 counties

2014 "Other" includes 27 counties

2011 "Other" includes 32 counties

2013 "Other" includes 32 counties

**Table 19**  
**High School Attended of New\* Students**

	Fall 2010		Fall 2011		Fall 2012		Fall 2013		Fall 2014	
	Count	Percent	Count	Percent	Count	Percent	Count	Percent	Count	Percent
Lincoln Sr. High School	105	7%	110	7%	133	8%	126	9%	90	6%
EGF Senior High School	84	6%	93	6%	94	6%	94	7%	75	5%
Stephen-Argyle Centra	41	3%	10	1%	45	3%	15	1%	43	3%
Fosston High School	18	1%	27	2%	50	3%	20	1%	38	3%
Crookston High School	14	1%	29	2%	30	2%	18	1%	28	2%
Sacred Heart High Scho	20	1%	24	2%	21	1%	15	1%	26	2%
Roseau High School	25	2%	18	1%	20	1%	24	2%	25	2%
Greenbush Middle Rive	21	1%	21	1%	35	2%	24	2%	23	2%
Bagley High School	24	2%	36	2%	25	2%	21	1%	21	1%
Fertile-Beltrami High Sc	8	1%	14	1%	24	1%	23	2%	21	1%
Winn-E-Mac High School	23	2%	17	1%	16	1%	22	2%	20	1%
Warren-Alvarado-Oslo	13	1%	4	0%	5	0%	14	1%	18	1%
Mahnomen High Schoo	3	0%	1	0%	16	1%	14	1%	17	1%
Marshall County Centra	11	1%	11	1%	10	1%	14	1%	15	1%
Tri-County High School	18	1%	17	1%	19	1%	16	1%	15	1%
Waubun High School	2	0%	6	0%	1	0%	12	1%	15	1%
Goodridge High School	6	0%	8	1%	7	0%	2	0%	14	1%
Kittson Central High Sc	7	0%	3	0%	4	0%	5	0%	11	1%
Cook County High Scho									10	1%
Lancaster High School	8	1%	2	0%	6	0%	6	0%	10	1%
Norman County East H	5	0%	9	1%	12	1%	6	0%	10	1%
Park Rapids Area HS	31	2%	22	1%	20	1%	21	1%	10	1%
Red Lake County Centra	10	1%	7	0%	9	1%	9	1%	10	1%
Bemidji High School	12	1%	13	1%	15	1%	6	0%	9	1%
Lafayette High School	14	1%	24	2%	10	1%	15	1%	9	1%
Jefferson Sr. High Scho	18	1%	10	1%	15	1%	12	1%	8	1%
Ortonville High School			17	1%	2	0%	4	0%	8	1%
Brainerd Sr. High Schoo	6	0%	2	0%	10	1%	3	0%	7	0%
Norman County West H	7	0%	8	1%	6	0%	4	0%	7	0%
Badger High School	6	0%	5	0%	6	0%	12	1%	5	0%
Fisher High School	10	1%	9	1%	6	0%	4	0%	5	0%
Grygla School	3	0%	8	1%	11	1%	9	1%	5	0%
Warroad High School	20	1%	24	2%	18	1%	15	1%	5	0%
Clearbrook-Gonvick HS	10	1%	4	0%	2	0%	11	1%	4	0%
Frazee High School	1	0%			1	0%	2	0%	4	0%
Hawley High School	8	1%	1	0%	2	0%	2	0%	4	0%
Ada-Borup High School	2	0%	2	0%	3	0%	7	0%	3	0%
Burnsville Sr. High Scho			3	0%	6	0%	2	0%	3	0%
Lake of the Woods HS	3	0%	6	0%	7	0%	3	0%	3	0%
Moorhead High School	5	0%	5	0%	2	0%	2	0%	3	0%
Climax-Shelly School			5	0%	3	0%	4	0%	2	0%
Detroit Lakes High Scho	1	0%	2	0%	2	0%	2	0%	2	0%
Minnewaska Area HS	5	0%	12	1%	5	0%	1	0%	2	0%
Underwood School	5	0%	1	0%	7	0%	2	0%	2	0%
Blackduck Secondary	2	0%	6	0%	2	0%	1	0%	1	0%
Cass Lake-Bena HS	3	0%	1	0%	2	0%			1	0%
Grand Rapids High Scho			1	0%	6	0%	3	0%	1	0%
Little Falls Community	4	0%	1	0%	2	0%	2	0%	1	0%
Rosemount High Schoo			2	0%					1	0%
John F Kennedy Sr. HS			2	0%	1	0%	1	0%		0%
Other MN	201	13%	200	14%	244	15%	208	15%	244	17%
Unknown	32	2%	38	3%	11	1%	13	1%	7	0%
Other - GED	134	9%	108	7%	126	8%	91	6%	92	7%
Other-Home School	17	1%	21	1%	13	1%	17	1%	18	1%
Other States	150	10%	158	11%	152	9%	161	11%	135	10%
North Dakota	333	22%	288	20%	349	21%	285	20%	245	17%
<b>Total</b>	<b>1,509</b>		<b>1,476</b>		<b>1,649</b>		<b>1,425</b>		<b>1,411</b>	

Source: 30th Day Enrollment Tables, ST\_03/MnSCU ISRS Operational Data, 10.31.14

\*New summer or fall.

2010 "Other MN" includes 132 schools

2012 "Other MN" includes 146 schools

2014 "Other MN" includes 153 schools

2011 "Other MN" includes 128 schools

2013 "Other MN" includes 140 schools

**Table 20**  
**Financial Aid Comparison**

		Gift Aid	Loans	Work Study
	Northland CTC (FY14)	34%	64%	2%
	Northland CTC (FY13)	32%	66%	2%
	Northland CTC (FY12)	32%	66%	2%
<b>Fiscal Year 13</b>	MNSCU 2 yr	38%	61%	1%
	MNSCU 4 yr	31%	67%	2%
	University of MN	43%	56%	2%
	Private 4 yr (Not for Profit)	64%	34%	2%
	Private For-Profit Schools	34%	65%	0%
	All MN Institutions	46%	52%	1%

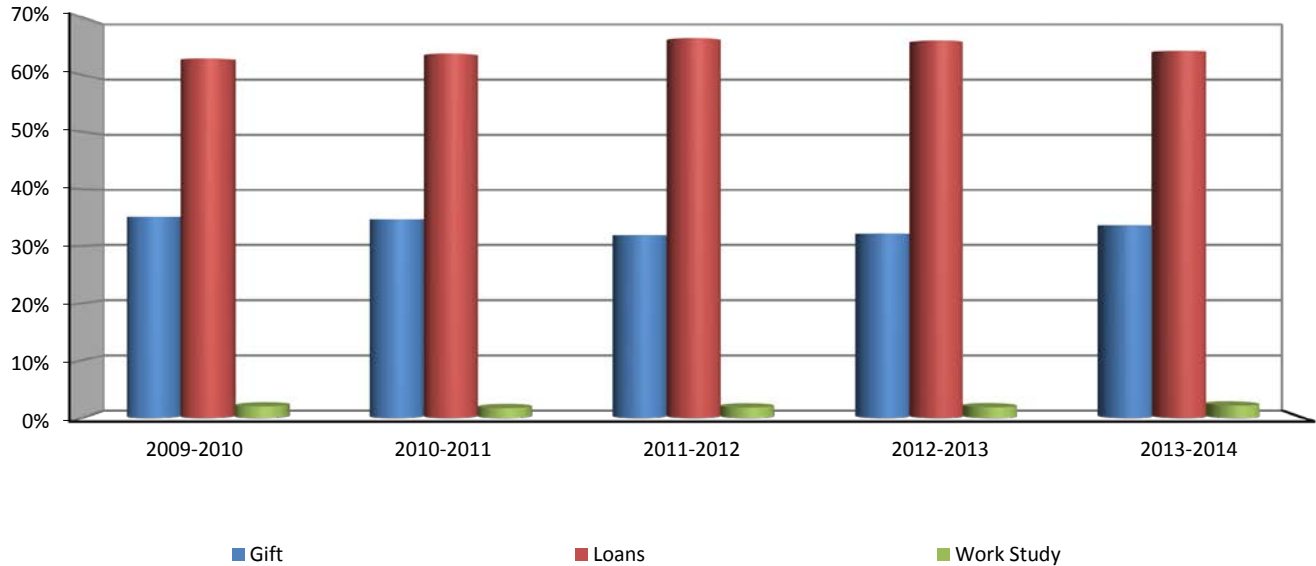
Source: MN Office of Higher Ed/Research, Data & Reports/Financial Aid at a Glance/2.2.15  
<http://www.ohe.state.mn.us/sPages/FAA.cfm>

**Table 21**  
**Students Receiving Financial Aid**

	2009-2010		2010-2011		2011-2012		2012-2013		2013-2014	
	Amount	Percent	Amount	Percent	Amount	Percent	Amount	Percent	Amount	Percent
Gift	8,090,784	35%	8,152,562	35%	7,319,963	32%	7,407,968	32%	7,099,710	34%
Loans	14,455,254	63%	14,963,547	64%	15,255,613	66%	15,185,388	66%	13,528,697	64%
Work Study	464,678	2%	409,027	2%	424,020	2%	433,391	2%	459,855	2%
<b>Total \$</b>	<b>23,010,716</b>		<b>23,525,136</b>		<b>22,999,596</b>		<b>23,026,747</b>		<b>21,088,262</b>	

Source: College Financial Aid Data

**Chart 13**  
**Financial Aid Trends**



This page intentionally left blank.

## Academic Progress and Degrees Earned

Table 22  
Discipline Summary by FYE - 5 Year Comparison

Subject	Discipline Description	FY 2010	FY 2011	FY 2012	FY 2013	FY 2014	FY 2014 FYE %	5 Yr Difference	5 Yr Difference %
ACCT	Accounting	32.9	36.2	41.4	39.1	31.0	1%	-1.8	-0.1
ADMM	Administrative - Medical	0.5					0%	-0.5	-1.0
ADMM	Medical Admin Secretary	19.5	26.9	26.8	25.2	24.9	1%	5.4	0.3
ADMM	Medical Secretary	0.5	3.2	3.5			0%	-0.5	-1.0
ADMS	Administrative	6.1	7.2	7.3	4.0	4.3	0%	-1.8	-0.3
ADMS	Administrative Secretary	32.3	27.9	24.4	23.7	23.3	1%	-9.0	-0.3
AGRI	Farm Operations Management	29.1	26.2	27.1	28.3	27.8	1%	-1.3	0.0
ANTH	Anthropology	15.9	17.0	17.5	18.8	20.5	1%	4.6	0.3
ARCH	Architectural Technology	20.5	19.6	27.2	30.9	32.1	1%	11.7	0.6
ART/ARTS	Art	27.9	27.8	25.7	27.9	27.7	1%	-0.2	0.0
ASC		0.1					0%	-0.1	-1.0
AUBO	Auto Body Collision Technology	20.8	19.6	18.8	17.5	15.4	1%	-5.4	-0.3
AUMO	Automotive Service Tech	46.9	56.6	42.6	31.4	27.2	1%	-19.6	-0.4
AVET	Aviation Electronics Tech					5.2	0%	5.2	0.0
AVIA	Aviation Maintenance Tech	51.0	75.8	85.6	88.8	74.0	3%	23.0	0.5
BIOL	Biology	272.1	276.0	232.9	257.7	240.1	9%	-32.0	-0.1
BLDG	Building Technology	6.1	5.2	5.8	10.0	7.3	0%	1.2	0.2
BUS/BUSN	Business	31.1	33.9	27.4	33.1	30.9	1%	-0.2	0.0
BWEB	Business Web Strategist	0.5	0.3				0%	-0.5	-1.0
CARP	Carpentry	9.2	15.5	15.3	15.7	14.6	1%	5.4	0.6
CDEV	Early Childhood and Paraprofessionals	22.5	22.9	16.9	16.4	19.5	1%	-3.1	-0.1
CGS			0.1				0%	0.0	0.0
CHCA	Child Development	0.2					0%	-0.2	-1.0
CHEM	Chemistry	34.5	33.8	35.0	34.7	37.5	1%	3.0	0.1
CLST	Phlebotomy	1.6	2.0	1.0	2.0		0%	-1.6	-1.0
CMAE	360 Programs		1.2	0.1	0.3	0.2	0%	0.2	0.0
CMAE	Center Manufacturing Ap			0.1			0%	0.0	0.0
CMAE	Manufacturing & Applied		1.0	0.1	0.6	1.4	0%	1.4	0.0
COMM	Communications		1.6		0.8	0.4	0%	0.4	0.0
CONE	Construction Electricity	77.9	59.1	48.9	45.5	39.5	2%	-38.4	-0.5
COSM	Cosmetology	32.4	8.1				0%	-32.4	-1.0
CPTR	Computer	5.0	3.6	4.6	3.2	2.7	0%	-2.3	-0.5
CPTR	Computer Network Tech	93.1	80.1	73.4	83.9	73.8	3%	-19.3	-0.2
CRJU	Criminal Justice - Law Enforcement	46.5	48.4	47.4	34.8	28.7	1%	-17.8	-0.4
CRLT	Career Learning	0.0	0.1	0.2		0.1	0%	0.1	2.0
CRLT	Career Related Topics	6.0	5.7	4.7	5.2	5.2	0%	-0.8	-0.1
CSBT	Computer Science Business		0.5	0.2	0.1		0%	0.0	0.0
CVOP	Commercial Vehicle Oper	18.6	13.7	19.2	10.7	9.0	0%	-9.6	-0.5
CVST	Cardiovascular Technology	12.5	10.2	8.3	6.9	5.0	0%	-7.5	-0.6
ECON	Economics	15.1	18.0	23.5	21.5	21.7	1%	6.6	0.4
EDU						0.1	0%	0.1	0.0
ELTR	CTCE-Electronics Tech	9.5	10.2	10.4	7.9	8.3	0%	-1.2	-0.1
EMTB	Emergency Medical Tech	8.7	8.8	8.5	7.7	8.7	0%	0.0	0.0
EMTP	Paramedicine	9.7	17.7	18.6	18.4	12.2	0%	2.5	0.3

Subject	Discipline Description	FY 2010	FY 2011	FY 2012	FY 2013	FY 2014	FY 2014 FYE %	5 Yr Difference	5 Yr Difference %
ENGL	Communications	205.5					0%	-205.5	-1.0
ENGL	English		196.2	183.4	209.3	200.2	8%	200.2	0.0
ENTR	Entrepreneurship	2.0	1.0				0%	-2.0	-1.0
ETAS	Electronics Tech/Automation			14.5			0%	0.0	0.0
ETAS	Electronics Technology	6.9	8.2		12.1	13.8	1%	6.8	1.0
ETEC	Electronics Core		0.9				0%	0.0	0.0
FBMT	Farm Business Management	175.3	160.9	145.1	135.3	126.2	5%	-49.1	-0.3
FICR	Finance & Credit Manage	0.1					0%	-0.1	-1.0
FIRE	Fire Technology	24.7	27.9	25.5	29.9	35.4	1%	10.6	0.4
FITN	Fitness Specialist				2.5	1.9	0%	1.9	0.0
FYEC	Pathways to Success					11.0	0%	11.0	0.0
GEOG	Geography	0.9	2.0	1.5	0.3	1.2	0%	0.3	0.3
GINT	Geospatial Intelligence Analysis					5.1	0%	5.1	0.0
GSMS	General Studies-Math/Sci	0.1					0%	-0.1	-1.0
GSSI	General Studies Social Sci	0.4	0.2				0%	-0.4	-1.0
GSWS	General Studies-Work Skills	0.0					0%	0.0	-1.0
GTEC	General Courses/Technology/Study	1.1	1.0	0.9	0.3	1.0	0%	0.0	0.0
HEAT	HVAC - Heating, Ventilation,...	7.7	8.1	8.7	21.4	12.5	0%	4.9	0.6
HIST	History	43.6	45.1	49.4	47.8	36.0	1%	-7.5	-0.2
HLTH	Health	1.1	1.3	1.6	0.8	1.3	0%	0.3	0.3
HLTH	Health Education	75.8	85.8	76.9	87.8	72.8	3%	-3.0	0.0
HPER	Health, Physical Education,	33.8	30.1	28.5	31.4	31.3	1%	-2.5	-0.1
HRES	Human Resources	0.1					0%	-0.1	-1.0
HUM/HUMN	Humanities	9.3	9.2	7.8	9.2	4.8	0%	-4.4	-0.5
IMAG	Imagery Analyst				12.3	36.0	1%	36.0	0.0
INTD	Web Development	0.6	0.2				0%	-0.6	-1.0
ISBE			0.1				0%	0.0	0.0
ISYS	Information Systems		0.1				0%	0.0	0.0
ITEC	Information Technology	0.7	0.8	0.5	0.3		0%	-0.7	-1.0
LEGL	Legal Administrative Assistant	0.2		0.1			0%	-0.2	-1.0
LENF	Law Enforcement	0.3					0%	-0.3	-1.0
MANF	CTCE-Manufacturing	5.6	1.7	1.7	3.1	1.4	0%	-4.2	-0.7
MATH	Mathematics	218.8	217.7	203.4	214.4	210.4	8%	-8.4	0.0
MEDS	Medical Administrative Sp		0.1				0%	0.0	0.0
MFPT	Manufacturing Process T	6.7	1.2	1.4	1.5	0.3	0%	-6.4	-1.0
MGMT			0.1				0%	0.0	0.0
MKTG	Marketing	3.7	5.8	5.9	5.9	5.8	0%	2.1	0.6
MKTG	Sales, Marketing, Manage	35.1	40.6	37.6	40.1	36.7	1%	1.7	0.0
MSTH	Massage Therapy	9.0	6.5	11.5	8.2	7.1	0%	-1.9	-0.2
MUSC	Music	27.5	28.8	27.5	31.4	28.7	1%	1.2	0.0
NAST	NAST-White Earth Tribal	0.5					0%	-0.5	-1.0
NMED	New Media		9.5	5.5	8.1	3.6	0%	3.6	0.0
NSCI	Natural Science	11.0	8.2	11.9	14.5	18.5	1%	7.6	0.7
NURS	Nursing - Registered	74.7	67.7	68.2	62.2	63.2	2%	-11.5	-0.2
NUTR	Nutrition	0.1					0%	-0.1	-1.0
OJIB	Ojibwemowin-White Earth	0.6					0%	-0.6	-1.0
OTAC	Occupational Therapy Asst	22.1	25.6	23.9	23.9	21.0	1%	-1.2	-0.1
PHIL	Philosophy	103.3	109.5	108.1	102.3	92.5	4%	-10.7	-0.1
PHLb	Phlebotomy					1.2	0%	1.2	0.0
PHRM	Pharmacy Technology	12.7	12.3	14.2	13.1	10.7	0%	-2.0	-0.2
PHYS	Physics	3.3	2.5	2.0	0.9	3.1	0%	-0.1	0.0
PLBG	Plumbing Technology	18.0	9.4	5.7	5.5	10.7	0%	-7.4	-0.4
PLSC/POLS/PSCI	Political Science	14.3	17.1	15.1	14.4	15.9	1%	1.6	0.1
PNSG	Practical Nursing	305.9	235.5	193.6	179.6	165.8	6%	-140.1	-0.5



Subject	Discipline Description	FY 2010	FY 2011	FY 2012	FY 2013	FY 2014	FY 2014 FYE %	5 Yr Difference	5 Yr Difference %
PPT				0.1			0%	0.0	0.0
PRIM	Production and Inventory		0.6				0%	0.0	0.0
PSC			0.1				0%	0.0	0.0
PSYC	Psychology	111.3	106.9	97.5	93.9	90.3	4%	-21.0	-0.2
PTAS	Physical Therapist Asst	25.1	26.3	25.5	28.3	29.7	1%	4.5	0.2
RADT	Radiologic Technology	30.7	28.8	29.9	28.8	27.3	1%	-3.4	-0.1
READ	Reading	29.4	28.2	24.1			0%	-29.4	-1.0
REFR	Refrigeration/Heating,Vent,AC	2.6	2.6	2.4	5.8	3.2	0%	0.6	0.2
RESP	Respiratory Care Therapist	29.3	25.8	22.2	22.9	16.8	1%	-12.4	-0.4
SCMT	Specialty Crops Management	7.7	7.6	4.3			0%	-7.7	-1.0
SOC/SOCI	Sociology	58.8	51.2	54.8	58.7	63.6	2%	4.8	0.1
SOCS	Social Sciences	0.7	3.2	2.7	2.8	1.9	0%	1.2	1.6
SPAN	Spanish	7.6	14.3	9.8	10.7	8.8	0%	1.2	0.2
SPCH	GE - Communications	1.1	1.1	3.8			0%	-1.1	-1.0
SPCH	Speech	69.2	65.0	65.3	71.5	65.4	3%	-3.9	-0.1
SSCI	General Courses	19.6	18.7	21.8	24.1	19.9	1%	0.3	0.0
SSCI	Social Sciences/Human Relations	2.2	2.3	1.8	1.3	1.3	0%	-0.9	-0.4
STSK	Study Skills/General Courses	0.6	0.3				0%	-0.6	-1.0
SUPL	Supervisory Management	0.1	0.5	0.4	0.9	1.4	0%	1.3	14.0
SURT	Surgical Technology	18.7	16.0	23.8	22.7	18.0	1%	-0.7	0.0
THTR	Theater	0.2					0%	-0.2	-1.0
UAST	Unmanned Aerial System			3.4	18.7	9.0	0%	9.0	0.0
WELD	Welding Technology	43.6	27.7	33.5	43.2	34.6	1%	-9.0	-0.2
<b>Total</b>		<b>2,938.0</b>	<b>2,827.5</b>	<b>2,658.9</b>	<b>2,717.0</b>	<b>2,558.3</b>		<b>-379.7</b>	<b>-0.1</b>

Source: MnSCU ISRS Operational Data, ST06-Students by Course, SUBJ, 11.3.14

FYE=Student Full Year Equivalent

This page intentionally left blank.

**Table 23**  
**Fall Majors Headcount by CIP Code - 5 Year Comparison**  
Sorted by Fall 2014 Headcount - Descending Order

CIP Code	Major/CIP Code Description	Fall 2010	Fall 2011	Fall 2012	Fall 2013	Fall 2014	% Change from 2013	5 Yr Difference	5 Yr Difference %
240101	Liberal Arts and Sciences	728	670	681	699	544	-22%	-184.0	-25%
513901	Licensed Practical	623	547	538	477	505	6%	-118.0	-19%
240102	General Studies					475	0%	475.0	0%
010104	Farm/Farm and Ranch M	393	340	301	326	266	-18%	-127.0	-32%
513801	Registered Nursing/Re	144	163	194	170	140	-18%	-4.0	-3%
510911	Radiologic Technology	100	99	93	82	80	-2%	-20.0	-20%
520201	Business Administration	47	43	67	55	75	36%	28.0	60%
521801	Sales, Distribution,	88	69	82	78	67	-14%	-21.0	-24%
470607	Airframe Mechanics an	55	66	70	56	65	16%	10.0	18%
110901	Computer Systems Netw	69	67	64	78	59	-24%	-10.0	-14%
430107	Criminal Justice/Poli	1	85	73	62	59	-5%	58.0	5800%
510806	Physical Therapy Tech	60	62	78	64	58	-9%	-2.0	-3%
510803	Occupational Therapis	62	58	59	58	55	-5%	-7.0	-11%
510909	Surgical Technology/T	43	47	46	55	55	0%	12.0	28%
131501	Teacher Assistant/Aid	60	47	42	48	52	8%	-8.0	-13%
290203	Signal/Geospatial Int				44	51	16%	51.0	0%
430201	Fire Prevention and S	31	38	36	53	45	-15%	14.0	45%
460302	Electrician	58	43	44	39	38	-3%	-20.0	-34%
510908	Respiratory Care Ther	59	42	37	32	38	19%	-21.0	-36%
480503	Machine Shop Technolo				1	36	3500%	36.0	0%
151303	Architectural Draftin	19	36	41	34	34	0%	15.0	79%
470604	Automobile/Automotive	74	53	46	33	34	3%	-40.0	-54%
520302	Accounting Technology	5	62	58	51	34	-33%	29.0	580%
510805	Pharmacy Technician/A	56	51	35	28	33	18%	-23.0	-41%
150406	Automation Engineer T			18	18	31	72%	31.0	0%
510713	Medical Insurance Cod	41	31	21	20	29	45%	-12.0	-29%
510904	Emergency Medical Tec	57	53	51	35	28	-20%	-29.0	-51%
520401	Administrative Assist	35	33	35	27	28	4%	-7.0	-20%
510716	Medical Administrativ	46	43	38	40	27	-33%	-19.0	-41%
510000	Health Services/Allied				11	22	100%	22.0	0%
470603	Autobody/Collision an	21	20	17	15	20	33%	-1.0	-5%
010103	Agricultural Economic		34	26	23	17	-26%	17.0	0%
460201	Carpentry/Carpenter	22	19	20	17	17	0%	-5.0	-23%
510901	Cardiovascular Techno	16	16	15	17	15	-12%	-1.0	-6%
490205	Truck and Bus Driver/	9	11	8	1	13	1200%	4.0	44%
521909	Special Products Mark	12	16	14	15	13	-13%	1.0	8%
513501	Massage Therapy/Thera	14	20	13	12	12	0%	-2.0	-14%
470201	Heating, Air Conditio	26	32	36	25	11	-56%	-15.0	-58%
510708	Medical Transcription	16	15	6	8	9	13%	-7.0	-44%
460503	Plumbing Technology/P	8	6	9	9	7	-22%	-1.0	-13%
513902	Nursing Assistant/Aid	3	4	4	1	7	600%	4.0	133%
510710	Medical Office Assist		3	13	8	5	-38%	5.0	0%
511009	Phlebotomy Technician	9	7	10	8	5	-38%	-4.0	-44%
090702	Digital Communication	13	12	12	8	3	-63%	-10.0	-77%
520207	Customer Service Mana	2	3	1		3	0%	1.0	50%
111006	Computer Support Spec		3	3	1	1	0%	1.0	0%
150613	Manufacturing Engineering	15	21			1	0%	-14.0	-93%
310507	Physical Fitness Tech			4	8	1	-88%	1.0	0%
430203	Fire Science/Fire-fig	5	3	6	1	1	0%	-4.0	-80%
490101	Aeronautics/Aviation/		3	18	8	1	-88%	1.0	0%
010301	Agricultural Production	17	27	36			0%	-17.0	-100%
010304	Crop Production		19				0%	0.0	0%

CIP Code	Major/CIP Code Description	Fall 2010	Fall 2011	Fall 2012	Fall 2013	Fall 2014	% Change from 2013	5 Yr Difference	5 Yr Difference %
090701	Radio and Television	1	1	6			0%	-1.0	-100%
120401	Cosmetology/Cosmetolo	11					0%	-11.0	-100%
150303	Electrical, Electroni	1	1	3	2		-100%	-1.0	-100%
150702	Quality Control Techn	4	2				0%	-4.0	-100%
151204	Computer Software Tec	5					0%	-5.0	-100%
430104	Criminal Justice/Safe	85					0%	-85.0	-100%
439999	Homeland Security, La				1		-100%	0.0	0%
480508	Welding Technology/We	34	37	53	44		-100%	-34.0	-100%
520203	Logistics, Materials,	6	1	1	1		-100%	-6.0	-100%
520204	Office Management and		2	1	3		-100%	0.0	0%
520205	Operations Management	3	1				0%	-3.0	-100%
520301	Accounting	47	1				0%	-47.0	-100%
520701	Entrepreneurship/Entr	1					0%	-1.0	-100%
	Unknown/Blank	663	724	816	744	359	-52%	-304.0	-46%
<b>Total</b>		<b>4,023</b>	<b>3,912</b>	<b>3,999</b>	<b>3,754</b>	<b>3,584</b>	<b>-5%</b>	<b>-439.0</b>	<b>-11%</b>

Source: 30th Day Enrollment Tables, ST\_03/MnSCU ISRS Operational Data, 10.31.14

**Table 24**  
**Fall Majors FYE by CIP Code - 5 Year Comparison**  
Sorted by Fall 2014 FYE - Descending Order

CIP Code	Major/CIP Code Description	Fall 2010	Fall 2011	Fall 2012	Fall 2013	Fall 2014	% Change from 2013	5 Yr Difference	5 Yr Difference %
240101	Liberal Arts and Sciences	279.0	250.8	258.4	287.5	203.5	-29%	-75.4	-27%
513901	Licensed Practical	232.8	201.3	197.6	165.4	178.8	8%	-54.0	-23%
240102	General Studies					75.5	0%	75.5	0%
010104	Farm/Farm and Ranch M	64.8	55.5	47.6	53.9	44.9	-17%	-20.0	-31%
470607	Airframe Mechanics an	38.9	46.4	47.1	35.9	42.9	19%	4.0	10%
513801	Registered Nursing/Re	45.8	50.0	60.1	58.2	40.3	-31%	-5.5	-12%
430107	Criminal Justice/Poli	0.4	42.7	35.4	30.4	30.6	1%	30.2	8162%
510911	Radiologic Technology	38.3	37.6	34.9	29.4	29.8	1%	-8.6	-22%
521801	Sales, Distribution,	33.5	27.3	33.7	29.0	26.0	-10%	-7.5	-22%
520201	Business Administration	17.0	16.0	25.2	19.8	23.7	20%	6.7	39%
290203	Signal/Geospatial Int				21.2	23.6	11%	23.6	0%
460302	Electrician	33.6	26.2	26.6	23.3	23.5	1%	-10.1	-30%
110901	Computer Systems Netw	25.6	25.9	25.5	30.1	23.1	-23%	-2.5	-10%
430201	Fire Prevention and S	13.7	14.8	15.5	22.0	21.9	-1%	8.2	60%
510806	Physical Therapy Tech	21.7	25.3	27.6	25.1	21.1	-16%	-0.6	-3%
510909	Surgical Technology/T	17.7	19.1	17.7	19.8	19.6	-1%	1.8	10%
510803	Occupational Therapis	22.3	19.7	21.5	20.2	19.0	-6%	-3.2	-15%
131501	Teacher Assistant/Aid	22.7	15.7	15.8	17.6	18.0	2%	-4.7	-21%
480508	Welding Technology/We	16.8	20.2	27.1	22.3	17.9	-20%	1.0	6%
151303	Architectural Draftin	9.3	17.1	20.2	17.8	16.9	-5%	7.6	81%
470604	Automobile/Automotive	35.3	27.0	22.4	16.0	16.9	5%	-18.5	-52%
510908	Respiratory Care Ther	22.6	16.5	15.2	12.2	14.0	15%	-8.6	-38%
150406	Automation Engineer T			6.6	7.9	12.7	61%	12.7	0%
520302	Accounting Technology	1.5	22.3	21.6	19.4	12.4	-36%	10.8	708%
510805	Pharmacy Technician/A	20.4	19.1	12.2	10.1	11.9	18%	-8.5	-42%
510904	Emergency Medical Tec	21.9	18.7	19.4	12.8	10.6	-17%	-11.3	-52%
520401	Administrative Assist	11.2	12.5	12.6	9.3	10.4	12%	-0.8	-7%
510716	Medical Administrativ	15.9	13.7	14.2	12.8	9.5	-26%	-6.4	-40%
460201	Carpentry/Carpenter	10.4	9.8	10.2	9.4	9.1	-3%	-1.3	-12%
470603	Autobody/Collision an	10.7	10.6	8.1	7.0	9.1	29%	-1.7	-15%
490205	Truck and Bus Driver/	5.4	6.6	4.7	0.4	7.8	1850%	2.4	44%
510713	Medical Insurance Cod	10.6	7.0	6.2	6.3	7.7	22%	-2.9	-27%
510000	Health Services/Allied				3.4	6.9	104%	6.9	0%
510901	Cardiovascular Techno	6.1	5.5	5.9	5.5	5.7	4%	-0.4	-6%
470201	Heating, Air Conditio	10.9	12.7	20.4	11.6	5.5	-53%	-5.4	-50%
513501	Massage Therapy/Thera	5.8	9.4	6.4	4.6	4.8	4%	-1.1	-18%
460503	Plumbing Technology/P	4.8	3.5	5.3	6.4	3.3	-48%	-1.5	-31%
510708	Medical Transcription	4.8	4.3	2.3	3.9	2.7	-30%	-2.1	-43%
521909	Special Products Mark	1.5	1.6	1.5	1.6	1.6	0%	0.1	7%
090702	Digital Communication	6.2	5.4	5.4	2.6	1.6	-39%	-4.6	-74%
510710	Medical Office Assist		0.9	4.0	2.5	1.6	-37%	1.6	0%
010103	Agricultural Economic		3.8	2.3	1.9	1.5	-19%	1.5	0%
513902	Nursing Assistant/Aid	0.3	0.4	0.8	0.1	1.0	900%	0.7	233%
511009	Phlebotomy Technician	3.3	1.9	3.4	2.4	1.0	-60%	-2.3	-71%
520207	Customer Service Mana	0.5	0.4	0.2		0.6	0%	0.1	26%
111006	Computer Support Spec		1.2	1.6	0.3	0.5	52%	0.5	0%
310507	Physical Fitness Tech			1.8	3.2	0.5	-85%	0.5	0%
490101	Aeronautics/Aviation/		1.6	10.3	6.2	0.5	-92%	0.5	0%
430203	Fire Science/Fire-fig	1.3	1.3	1.4	0.4	0.3	-37%	-1.1	-80%
150613	Manufacturing Engineering	6.9	9.0			0.1	0%	-6.8	-99%
010301	Agricultural Production	3.5	5.3	7.1			0%	-3.5	-100%
010304	Crop Production		2.7				0%	0.0	0%
090701	Radio and Television	0.6	0.4	2.6	0.9		-100%	-0.6	-100%
120401	Cosmetology/Cosmetolo	4.3					0%	-4.3	-100%

CIP Code	Major/CIP Code Description	Fall 2010	Fall 2011	Fall 2012	Fall 2013	Fall 2014	% Change from 2012	5 Yr Difference	5 Yr Difference %
150303	Electrical, Electroni	0.4	0.4	1.3	0.8		-100%	-0.4	-100%
150702	Quality Control Techn	0.4	0.1				0%	-0.4	-100%
151204	Computer Software Tec	1.8					0%	-1.8	-100%
430104	Criminal Justice/Safe	41.9					0%	-41.9	-100%
439999	Homeland Security, La				1.0		-100%	0.0	0%
480503	Machine Shop Technolo				0.2		-100%	0.0	0%
512601	Health Aide				59.2		-100%	0.0	0%
520203	Logistics, Materials,	0.4	0.2	0.1	0.1		-100%	-0.4	-100%
520204	Office Management and		0.3	0.1	1.0		-100%	0.0	0%
520205	Operations Management	0.3	0.1				0%	-0.3	-100%
520301	Accounting	17.3	0.2				0%	-17.3	-100%
520701	Entrepreneurship/Entr	0.3					0%	-0.3	-100%
	Unknown/Blank	98.5	104.1	121.4	53.7	43.8	-18%	-54.6	-55%
<b>Total</b>		<b>1,322.1</b>	<b>1,252.3</b>	<b>1,296.3</b>	<b>1,226.1</b>	<b>1,116.0</b>	<b>-9%</b>	<b>-206.1</b>	<b>-16%</b>

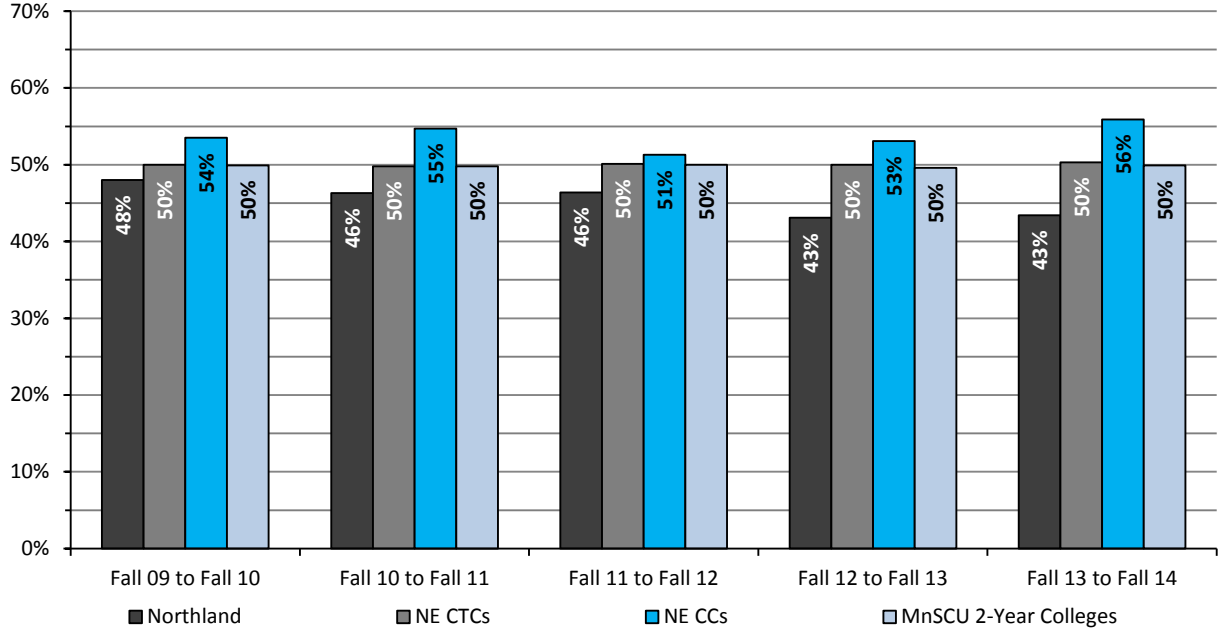
Source: 30th Day Enrollment Tables, ST\_03/MnSCU ISRS Operational Data, 11.6.14

**Table 25**  
**On-line Enrollment**

	Fiscal Year				
	2010	2011	2012	2013	2014
Sections Offered	368	233	429	401	367
FYE	439.7	517.2	710.2	700.1	728.8
Duplicated Headcount	5,400	6,011	8,162	7,912	8,132

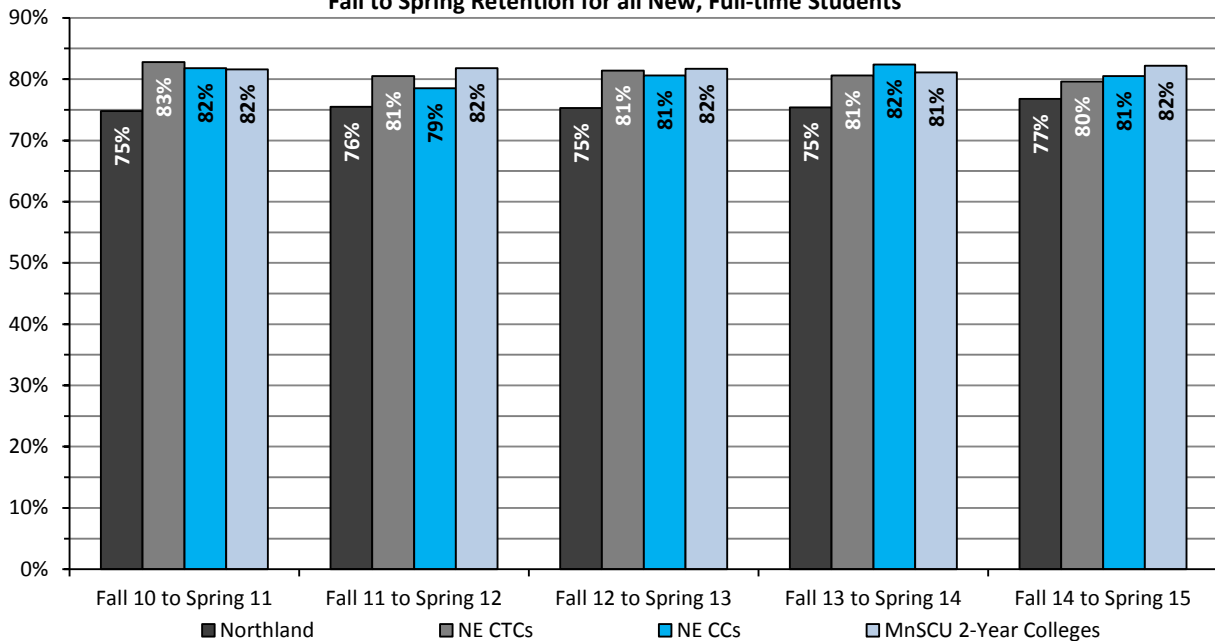
Source: MnSCU ISRS Operational Data, ST06 Student by Course/  
Media Codes 03, 09, 12, 13 /11.3.14

**Chart 14**  
**Northland Community and Technical College**  
**Fall to Following Fall Retention for all New, Full-time Students**



NE CTC's - Hibbing CC, Lake Superior College and Mesabi Range College  
 NE CC's - Fond du Lac TCC, Itasca CC, Rainy River CC and Vermilion CC  
 Source: MnSCU ISRS Operational Data/Student Persistence Tables/all adm stat, new, full-time

**Chart 15**  
**Northland Community and Technical College**  
**Fall to Spring Retention for all New, Full-time Students**



NE CTC's - Hibbing CC, Lake Superior College and Mesabi Range College  
 NE CC's - Fond du Lac TCC, Itasca CC, Rainy River CC and Vermilion CC  
 Source: MnSCU ISRS Operational Data/Student Persistence Tables/all adm stat, new, full-time

*Fall 14 to Spring 15 is Preliminary as of 8/6/15*

**Table 26**  
**Enrollment by Program**

	Fall 10		Fall 11		Fall 12		Fall 13		Fall 14	
	Count	Percent	Count	Percent	Count	Percent	Count	Percent	Count	Percent
Liberal Arts	728	18%	670	17%	681	17%	728	19%	1,019	28%
Occupational	2,632	65%	2,518	64%	2,502	63%	2,642	70%	2,206	62%
Undecided	663	16%	724	19%	816	20%	384	10%	359	10%
<b>Total</b>	<b>4,023</b>		<b>3,912</b>		<b>3,999</b>		<b>3,754</b>		<b>3,584</b>	

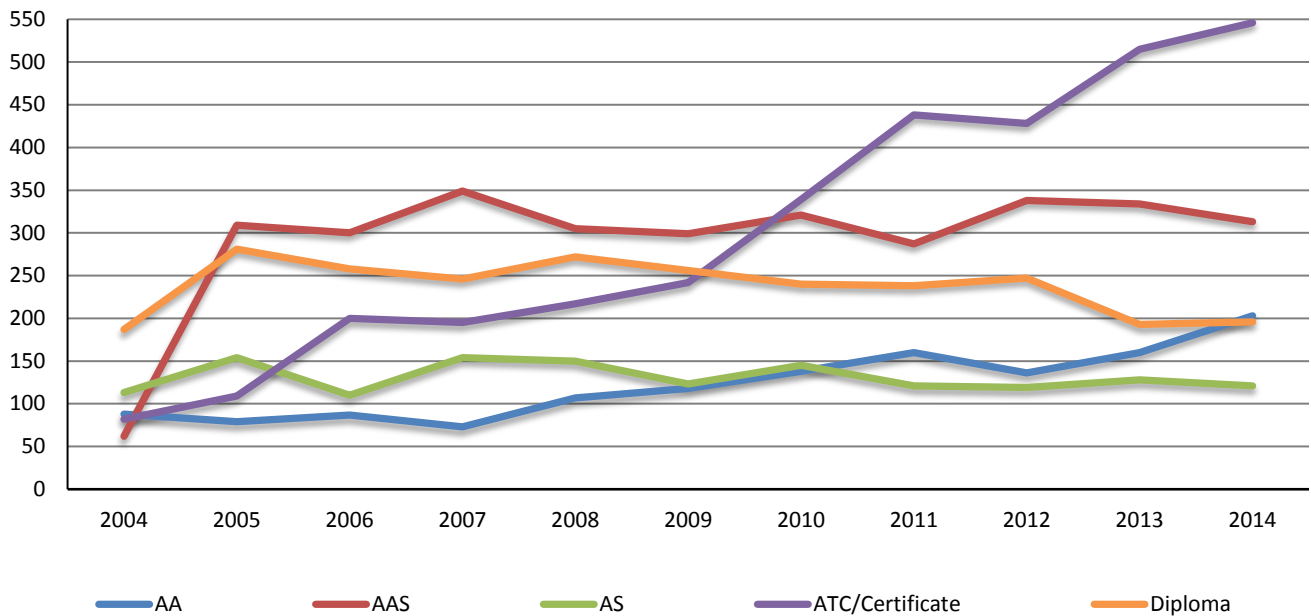
Source: 30th Day Enrollment Tables, ST\_03/MnSCU ISRS Operational Data/CIP Code 240101, 240102, 11.6.14

**Table 27**  
**Degrees Awarded by Fiscal Year**

	2010		2011		2012		2013		2014	
	Count	Percent	Count	Percent	Count	Percent	Count	Percent	Count	Percent
AA	138	12%	160	13%	136	11%	160	12%	203	15%
AAS	321	27%	287	23%	338	27%	334	25%	313	23%
AS	145	12%	121	10%	119	9%	128	10%	121	9%
ATC/Certificate	339	29%	438	35%	428	34%	515	39%	546	40%
Diploma	240	12%	238	14%	247	19%	193	16%	196	14%
<b>Total Degrees</b>	<b>1,183</b>		<b>1,244</b>		<b>1,268</b>		<b>1,330</b>		<b>1,379</b>	
<b>Total Students</b>	<b>1,114</b>		<b>1,119</b>		<b>1,114</b>		<b>1,165</b>		<b>1,230</b>	

Source: ITS Management Reports/Academic/Awards Granted, 017ACA, 11.6.14

**Chart 16**  
**Degrees Awarded by Year**





**Table 28  
Persistence and Completion Rates for New, Fall, Full-Time Students  
Fall 2010**

	Fall 2010 Entering Cohort	Fall to Spring			Fall to Fall			2-Year			3-Year		
		First Spring Retention Rate	First Spring Success Rate	Second Fall Retention Rate	Second Fall Success Rate	Third Fall Retention Rate	Third Fall Success Rate	Third Fall Retention Rate	Third Fall Success Rate	Three Year Grad Rate	Fourth Fall Retention Rate	Fourth Fall Success Rate	
<b>Gender</b>													
Female	351.	75%	83%	50%	69%	23%	65%		41%	8%	64%		
Male	424.	75%	78%	43%	59%	14%	52%		35%	4%	52%		
<b>Race/Ethnicity</b>													
American Indian or Alaska Native	15.	47%	53%	40%	47%	13%	27%		13%	0%	27%		
Asian	6.	50%	67%	33%	67%	17%	83%		50%	17%	83%		
Black or African American	50.	72%	78%	42%	56%	14%	62%		36%	0%	58%		
Hispanic of any race	37.	68%	78%	41%	59%	19%	46%		24%	16%	51%		
Two or more races	34.	62%	62%	44%	53%	6%	41%		18%	3%	35%		
White	628.	77%	83%	47%	65%	19%	60%		40%	6%	60%		
<b>Age Group</b>													
*Non-traditional Age	143.	75%	80%	54%	71%	22%	66%		49%	6%	62%		
*Traditional Age	632.	75%	81%	45%	62%	17%	56%		35%	6%	56%		
<b>Underrepresented</b>													
Not	182.	84%	89%	54%	71%	25%	70%		45%	8%	68%		
Underrepresented	521.	71%	78%	44%	60%	16%	53%		35%	6%	54%		
Unknown	72.	79%	81%	47%	68%	19%	64%		44%	4%	61%		
<b>Admission Status</b>													
High School	12.	83%	83%	33%	58%	0%	42%		42%	0%	50%		
Undergraduate Other	64.	72%	73%	38%	55%	11%	53%		23%	6%	52%		
Undergraduate Regular	456.	73%	79%	43%	59%	18%	52%		31%	7%	52%		
Undergraduate Transfer	243.	79%	86%	56%	76%	21%	72%		55%	4%	70%		
<b>Total</b>	775.	75%	81%	46%	64%	18%	58%		38%	6%	58%		

Success rate is the retention, transfer, and graduation combined; measure at beginning of term.

\*Private data cell sizes less than 5 not reported. Racial/ethnic status for such reported in aggregate.

\*\*Underrepresented - Student of color, Pell eligible, or first generation (MIN defined - neither parent has any post secondary education).

Source: MnSCU ISRS Operational Data; Student Persistence Tables; Fall Cohort, New, Full-time Students; Undergrad Regular, Transfer, Other and High School

**Table 29  
Persistence and Completion Rates for New, Fall, Full-Time Students  
Fall 2011**

	Fall 2011 Entering Cohort	Fall to Spring			Fall to Fall		2-Year		3-Year	
		First Spring Retention Rate	First Spring Success Rate	Second Fall Retention Rate	Second Fall Success Rate	Third Fall Retention Rate	Third Fall Success Rate	Three Year Grad Rate	Fourth Fall Retention Rate	Fourth Fall Success Rate
<b>Gender</b>										
Female	312.	74%	84%	48%	70%	23%	64%	42%	10%	66%
Male	391.	76%	82%	45%	64%	13%	62%	42%	6%	63%
<b>Race/Ethnicity</b>										
American Indian or Alaska Native	19.	63%	74%	47%	63%	5%	47%	47%	0%	53%
Black or African American	46.	74%	80%	41%	65%	15%	61%	20%	9%	65%
Hispanic of any race	39.	72%	79%	41%	51%	26%	54%	31%	8%	49%
Two or more races	37.	73%	86%	46%	62%	14%	49%	32%	5%	51%
White	553.	76%	84%	47%	69%	18%	65%	45%	8%	67%
<b>AgeGroup</b>										
*Non-traditional Age	115.	74%	85%	36%	61%	11%	63%	48%	3%	59%
*Traditional Age	589.	76%	83%	48%	68%	19%	63%	41%	8%	66%
<b>Underrepresented</b>										
Not	200.	75%	84%	52%	76%	22%	72%	50%	7%	72%
Underrepresented	437.	76%	83%	44%	62%	17%	58%	38%	7%	59%
Unknown	67.	72%	82%	42%	75%	12%	72%	46%	10%	78%
<b>Admission Status</b>										
High School	8.	88%	88%	38%	88%	13%	75%	38%	13%	88%
Undergraduate Other	54.	59%	69%	33%	56%	24%	61%	26%	9%	57%
Undergraduate Regular	417.	77%	84%	46%	64%	16%	57%	38%	8%	59%
Undergraduate Transfer	225.	75%	85%	50%	76%	19%	75%	54%	6%	75%
<b>Total</b>	704.	75%	83%	46%	67%	18%	63%	42%	8%	65%

Success rate is the retention, transfer, and graduation combined; measure at beginning of term.

\*Private data cell sizes less than 5 not reported. Racial/ethnic status for such reported in aggregate.

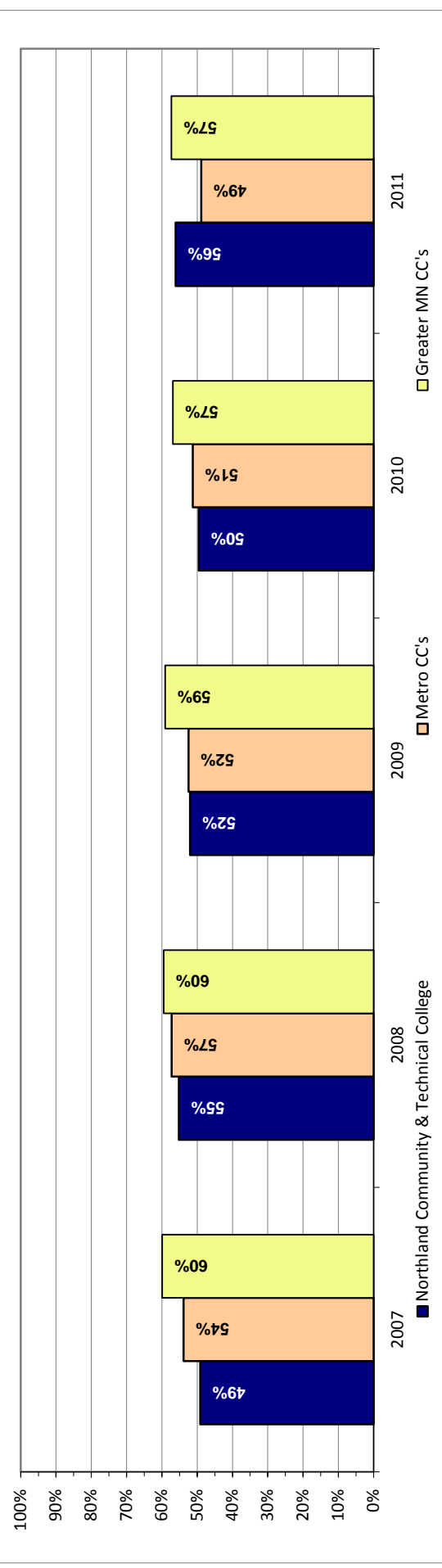
\*\* Underrepresented - Student of color, Pell eligible, or first generation (MN defined - neither parent has any post secondary education).

Source: MnSCU ISRS Operational Data; Student Persistence Tables; Fall Cohort, New, Full-time Students; Undergrad Regular, Transfer, Other and High School

**Table 30**  
**IPEDS 3-Year Graduation and Transfer-out Rates**  
**Fall 2006, Fall 2007, Fall 2008, Fall 2009 and Fall 2010 First-time, Full-time, Degree Seeking Students**

COLLEGE	Cohort				Graduation Rate				Transfer Rate				Combined Grad/Trans Rate			
	2007	2008	2009	2010	2011	2007	2008	2009	2010	2011	2007	2008	2009	2010	2011	
<b>Cohort</b>	<b>482</b>	<b>426</b>	<b>527</b>	<b>456</b>	<b>417</b>	<b>31%</b>	<b>30%</b>	<b>29%</b>	<b>28%</b>	<b>35%</b>	<b>18%</b>	<b>26%</b>	<b>23%</b>	<b>21%</b>	<b>21%</b>	
<b>Northland Community &amp; Technical College</b>																
Metro CC's	3,830	3,691	3,836	3,560	2,808	15%	17%	17%	14%	19%	38%	40%	35%	37%	30%	
Metro CTC's	2,579	2,689	3,101	2,583	2,549	15%	17%	15%	15%	15%	26%	28%	24%	23%	23%	
Metro TC's	1,272	1,189	1,326	1,020	894	30%	30%	28%	31%	28%	19%	17%	17%	14%	15%	
Greater MN CC's	741	699	833	798	773	28%	31%	29%	29%	28%	31%	28%	30%	28%	29%	
Greater MN CTC's	6,666	6,535	7,004	7,518	6,715	33%	33%	33%	33%	34%	20%	23%	19%	19%	19%	
Greater MN TC's	1,921	1,787	2,078	546	414	40%	40%	38%	28%	31%	21%	24%	20%	17%	12%	
<b>Total Colleges</b>	<b>17,009</b>	<b>16,590</b>	<b>18,178</b>	<b>16,025</b>	<b>14,153</b>	<b>27%</b>	<b>27%</b>	<b>27%</b>	<b>25%</b>	<b>27%</b>	<b>26%</b>	<b>28%</b>	<b>24%</b>	<b>24%</b>	<b>22%</b>	

**Chart 17**  
**3-Year Combined Graduate/Transfer Rate**



Source: MnSCU System Office Research  
 Note: Starting with 2010 cohort St Cloud Technical and Community College moved from Greater MN TC to Greater MN CTC comparison group  
 Note: Starting with 2010 cohort Alexandria Technical and Community College moved from Greater MN TC to Greater MN CTC comparison group  
 Note: Fall 2007 was revised to include students who completed an award of less than 9 credits who were not previously included as completers (and remove awards with dates before cohort start.) Following colleges changed: Inver Hills, Lake Superior, Minneapolis, MN West, Normandale, North Hennepin, Hibbing, Itasca, Northwest, Ridgewater, St Paul.

This page intentionally left blank.

## Faculty and Staff

Employee Headcount, FTE, and Diversity Measures  
Northland Community and Technical College  
Fiscal Years 2012-2014

**Table 31**  
**Employee Headcount**

Employee Role	2012	2013	2014	Change	% Change
Instructional Faculty	191	230	254	63	33.0%
Service and Support	63	60	58	-5	-7.9%
Professionals	39	43	41	2	5.1%
Managers and Supervisors	10	11	11	1	10.0%
Administrators	14	11	11	-3	-21.4%
<b>Total</b>	<b>317</b>	<b>355</b>	<b>375</b>	<b>58</b>	<b>18.3%</b>

**Table 32**  
**Employee Full-Time Equivalent (FTE)**

Employee Role	2012	2013	2014	Change	% Change
Instructional Faculty	159.0	164.0	161.0	2	1.3%
Service and Support	52.0	50.2	48.7	-3.3	-6.3%
Professionals	36.2	41.3	40.0	3.8	10.5%
Managers and Supervisors	10.3	10.2	10.7	0.4	3.9%
Administrators	13.3	11.3	10.9	-2.4	-18.0%
<b>Total</b>	<b>270.8</b>	<b>277</b>	<b>271.3</b>	<b>0.5</b>	<b>0.2%</b>

**Table 33**  
**Employee Diversity (Headcount)**

Employee Role	2012	2013	2014	Change	% Change
Percent Employees of Color	3.8%	5.6%	5.9%	2.1%	
Number Employees of Color	12	20	22	10	83.3%
Percent Faculty of Color	2.1%	3.9%	4.7%	2.6%	
Number Faculty of Color	4	9	12	8	200.0%
Percent All Other Employees of Color	6.3%	8.8%	8.3%	2.0%	
Number All Other Employees of Color	8	11	10	2	25.0%

Source: Northland Community and Technical College HR Office / System Office of Human Resources

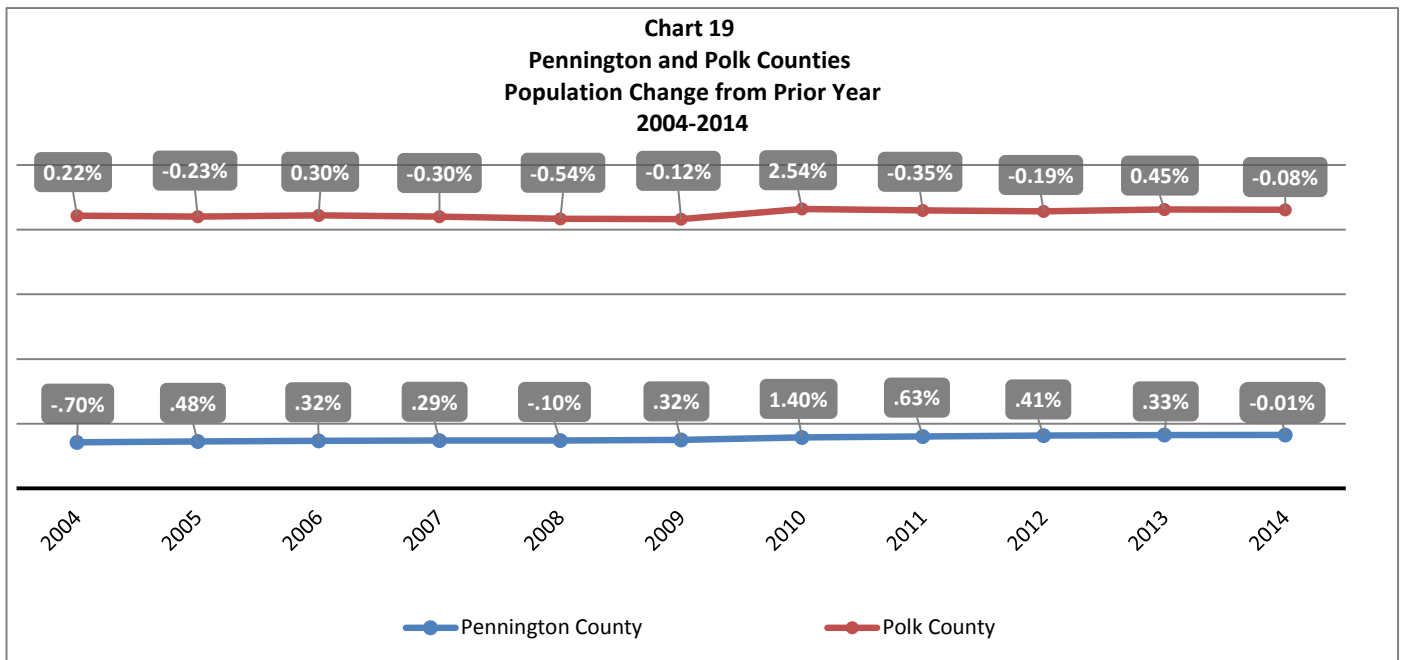
This page intentionally left blank.

# Regional Population and Employment

**Table 34**  
Population Estimates for Region 1 Counties and State

	2009	2010	2011	2012	2013	2014	2009 - 2014 % Change	2004 - 2014 % Change
Kittson County	4,475	4,552	4,528	4,496	4,498	4,440	-1%	-9%
Marshall County	9,477	9,439	9,473	9,445	9,424	9,420	-1%	-6%
Norman County	6,628	6,852	6,859	6,656	6,634	6,643	0%	-7%
Pennington County	13,738	13,930	14,018	14,075	14,121	14,119	3%	4%
Polk County	30,817	31,600	31,489	31,429	31,569	31,545	2%	1%
Red Lake County	4,157	4,089	4,105	4,086	4,071	4,048	-3%	-6%
Roseau County	15,921	15,629	15,536	15,484	15,522	15,663	-2%	-4%
Region 1	85,213	86,091	86,008	85,671	85,839	85,878	1%	-2%
Minnesota	5,300,942	5,446,490	5,344,861	5,379,139	5,420,380	5,453,218	3%	6%

Source: Minnesota State Demographic Center and the Metropolitan Council

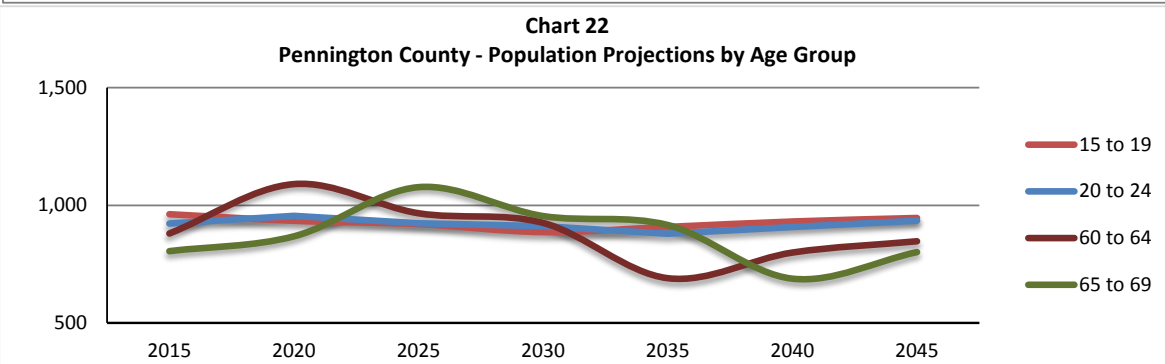
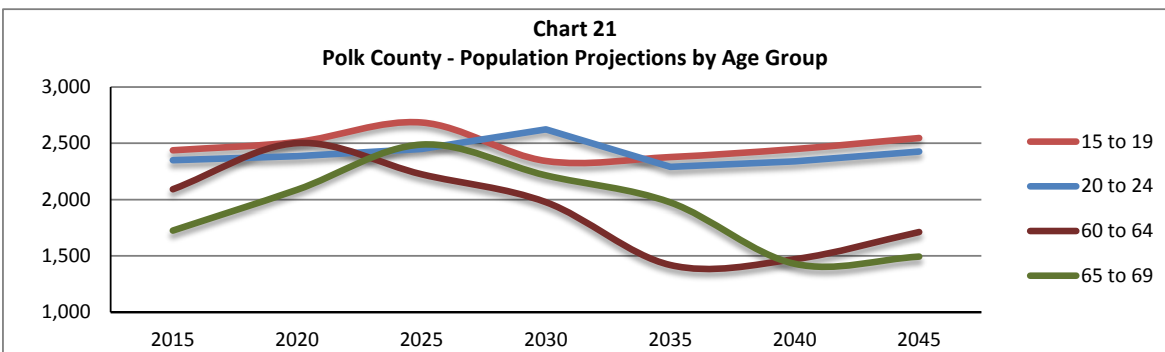
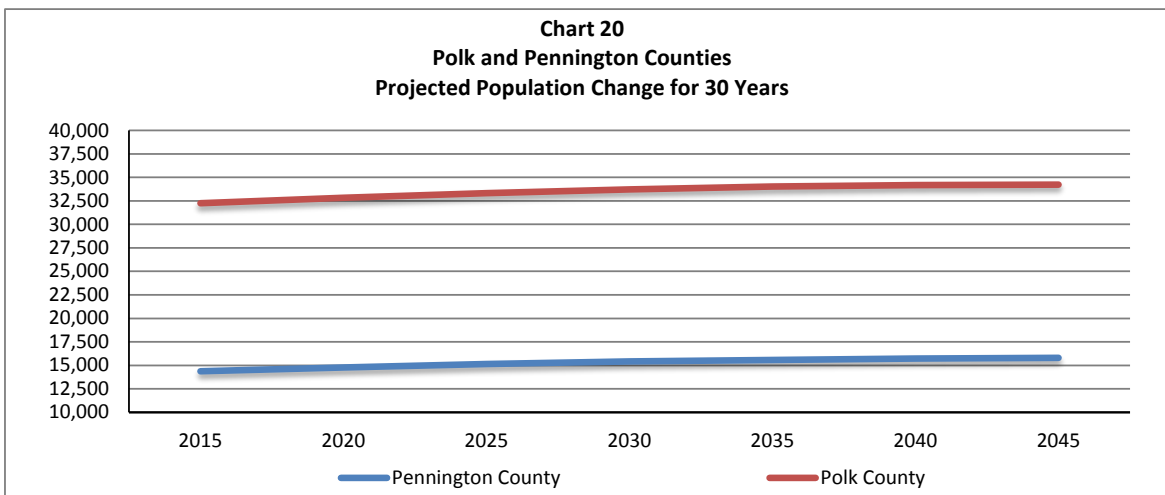


**Table 35**  
**Projected 30 Year Population Change for County, Region, and State**

County	2015	2020	2025	2030	2035	2040	2045	2015 - 2025 % Change	2015 - 2045 % Change
Kittson County	4,597	4,621	4,654	4,659	4,622	4,537	4,455	1.2%	-3.1%
Marshall County	9,592	9,718	9,838	9,920	9,937	9,893	9,866	2.6%	2.9%
Norman County	7,011	7,091	7,183	7,259	7,307	7,307	7,272	2.5%	3.7%
Pennington County	14,372	14,764	15,153	15,415	15,580	15,715	15,799	5.4%	9.9%
Polk County	32,252	32,844	33,317	33,725	34,024	34,191	34,229	3.3%	6.1%
Red Lake County	4,216	4,312	4,393	4,435	4,435	4,445	4,445	4.2%	5.4%
Roseau County	16,279	16,703	17,221	17,771	18,073	18,260	18,449	5.8%	13.3%
Region 1	88,319	90,053	91,759	93,184	93,978	94,348	94,515	3.9%	7.0%
Minnesota	5,497,933	5,677,582	5,841,619	5,982,601	6,093,729	6,175,801	6,234,930	6.3%	13.4%

Source: MN Dept. of Administration/Office of Geographic Demographic Analysis/State Demographic Center March 2014

\*Most recent data available as of 1.30.15



Source: MN State Demographic Center, March 2014/MN County Population Projections by Age and Gender, 2015-2045



Table 36  
High School Enrollment for Area Districts

	10-11	11-12	12-13	13-14	14-15
<b>Ninth</b>	598	515	566	595	537
<b>Tenth</b>	582	568	532	567	593
<b>Eleventh</b>	547	562	548	508	582
<b>Twelfth</b>	573	510	539	529	489
<b>Total</b>	<b>2,301</b>	<b>2,155</b>	<b>2,185</b>	<b>2,200</b>	<b>2,201</b>

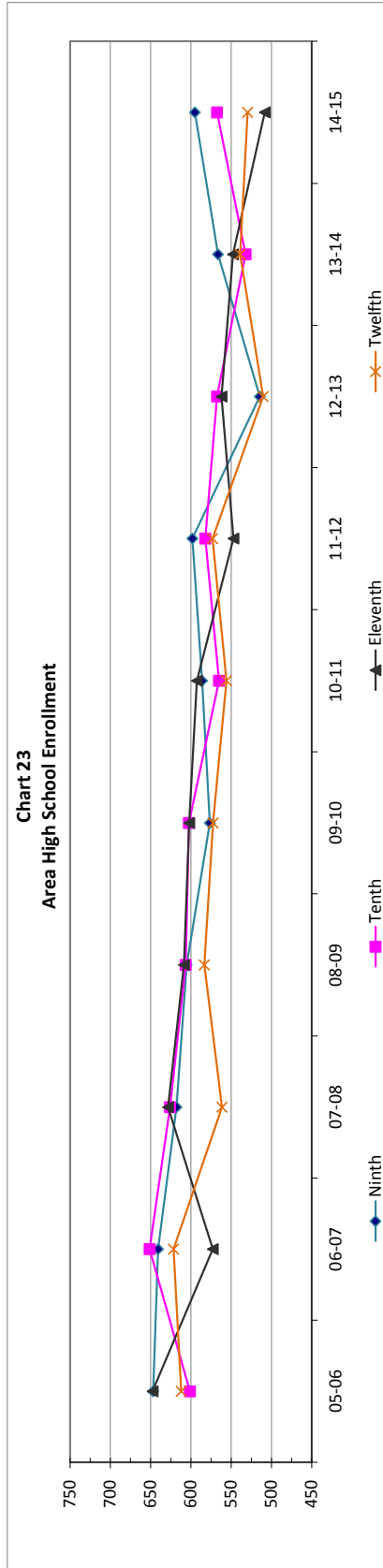


Table 37  
2014-2015\* Enrollment for Area School Districts (K-12)

	ISD #441 Marshall County Central Schools	ISD #561 Goodridge Public School District	ISD #564 TRF School District	ISD #593 Crookston Public School District	ISD #595 EGF Public Schools	ISD #600 Fisher Public School District	ISD #630 Red Lake Falls Public School District	ISD #2176 Warren- Alvarado-Olso School District	ISD #2683 Greenbush Middle-River	Total
<b>Kinder</b>	40	27	140	100	161	18	27	36	31	580
<b>1</b>	31	24	148	95	148	22	34	38	25	565
<b>2</b>	23	10	148	90	145	24	22	42	30	534
<b>3</b>	31	16	141	87	129	15	17	36	19	491
<b>4</b>	27	20	146	103	130	20	28	38	29	541
<b>5</b>	26	11	141	101	132	21	31	31	34	528
<b>6</b>	36	17	155	79	143	14	34	31	31	540
<b>7</b>	26	16	130	99	130	19	26	33	37	516
<b>8</b>	29	10	153	95	136	16	26	28	38	531
<b>9</b>	31	10	145	100	135	17	32	36	31	537
<b>10</b>	34	23	195	109	120	24	28	27	33	593
<b>11</b>	32	8	182	95	144	24	26	36	35	582
<b>12</b>	25	12	122	85	120	23	22	34	46	489
<b>Total</b>	<b>391</b>	<b>204</b>	<b>1,946</b>	<b>1,238</b>	<b>1,773</b>	<b>257</b>	<b>353</b>	<b>446</b>	<b>419</b>	<b>7,027</b>

Source: Minnesota Department of Education, Data Reports and Analytics, Minnesota Funding Reports, District/ADMs, AY2011 through AY2015;

\*AY 2015 reported enrollments preliminary based on MnDOE 2014-2015 Enrollment by Ethnicity/Gender Report

**Table 38**  
**Average Unemployment Rate**

	Pennington County	Polk County	Economic Development Region 1	Minnesota	United States
<b>2005</b>	5.5%	4.5%	5.2%	4.1%	5.1%
<b>2006</b>	5.5%	4.6%	5.5%	4.0%	4.6%
<b>2007</b>	6.9%	4.6%	6.0%	4.6%	4.6%
<b>2008</b>	7.1%	5.0%	5.9%	5.4%	5.8%
<b>2009</b>	8.8%	5.9%	7.5%	7.8%	9.3%
<b>2010</b>	9.0%	6.6%	7.5%	7.4%	9.6%
<b>2011</b>	7.6%	7.0%	7.0%	6.5%	8.9%
<b>2012</b>	6.5%	6.1%	6.1%	5.6%	8.1%
<b>2013</b>	6.2%	5.3%	5.7%	4.9%	7.4%
<b>2014</b>	5.0%	4.5%	4.7%	4.1%	6.2%
<b>2015</b>	4.9%	4.8%	4.8%	3.8%	5.6%

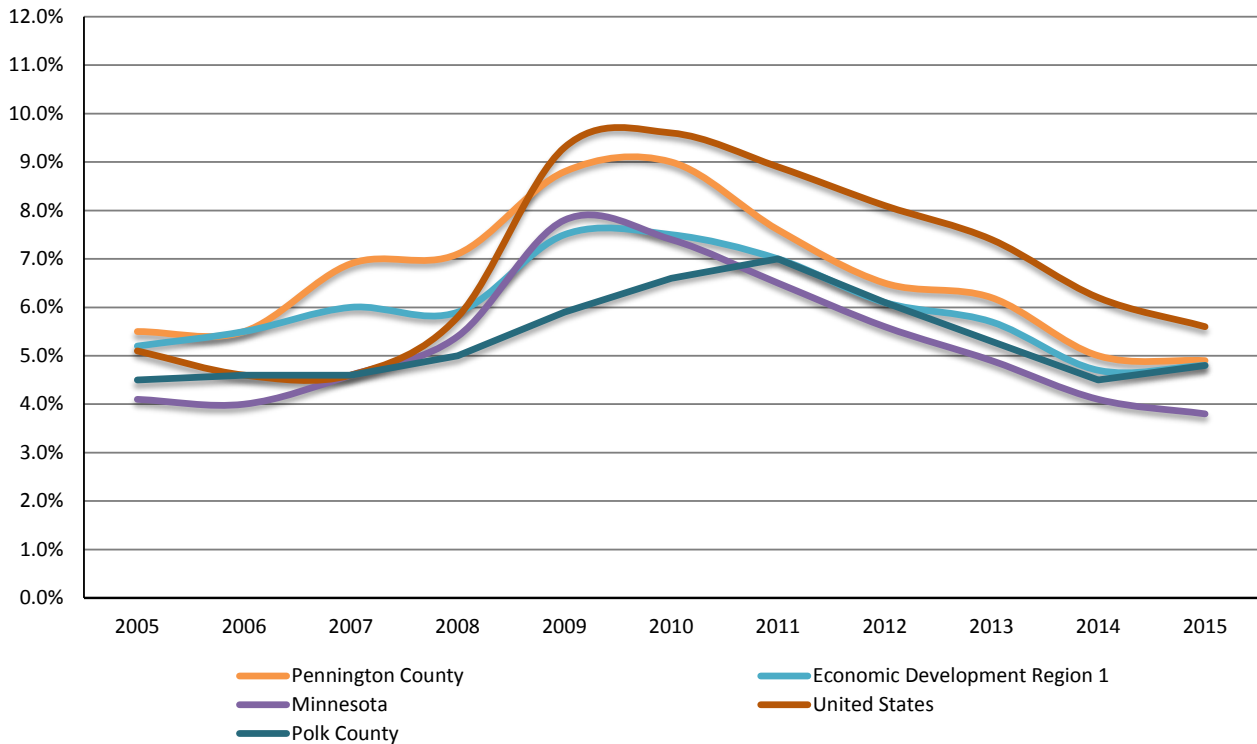
Source: Minnesota Department of Employment and Economic Development/Local Area Unemployment Statistics/MN Counties/Pennington and Polk Counties/Historical Data, Annual Unemployment Rate, 2002-2015, not seasonally adjusted

Unemployed includes those not employed but available for work and actively looking during the last four weeks; those waiting to be called back to a job from which they were laid off; or persons waiting to report to a new wage or salaried job.

Unemployment rate determined by dividing the total number unemployed by the total labor force (sum of employed and unemployed people).

\*as of June 2015

**Chart 24**  
**Unemployment Rates**



**Northland Community and Technical College**  
**Community College Survey of Student Engagement (CCSSE) and**  
**Survey of Entering Student Engagement (SENSE) Summary**

**Review of 2014 CCSSE Results**

Benchmark	2010	2012	2014
Active and Collaborative Learning	49.5	45	51
Student Effort	46.1	42.8	43.8
Academic Challenge	48.8	42.6	47.9
Student-Faculty Interaction	50.3	46.7	49.3
Support for Learners	49.6	48.4	47.3

**Aspects of Highest Student Engagement - 2014**

	NCTC	Cohort
Worked with other students on projects during class	60.4%	49.8%
Worked with classmates outside of class to prepare class assignments	29.7%	24.6%
Worked with instructors on activities other than coursework	13.0%	10.9%
Using information you have read or heard to perform a new skill	69.2%	64.8%
Number of assigned textbooks, manuals, books, or book-length packs of course readings	63.4%	55.8%

**Aspects of Lowest Student Engagement - 2014**

	NCTC	Cohort
Prepared two or more drafts of a paper or assignment before turning it in	39.3%	51.1%
Integrating ideas or information from various sources	52.4%	64.5%
Number of books read on your own (not assigned) for personal enjoyment or academic enrichment 5 or more	18.7%	22.9%
Number of written papers or reports of any length	49.2%	59.8%
Frequency: Peer or other tutoring	22.3%	30.3%

**Review of 2014 SENSE Results**

Benchmark	2010	2012	2014
Early Connections	55.9	58.3	53.1
High Expectations and Aspirations	41.9	47.3	49.3
Clear Academic Plan and Pathway	53.6	58.1	59.1
Effective Track to College Readiness	49.6	51.2	50.5
Engaged Learning	50.6	45.8	47.9
Academic and Social Support Network	49.5	49.2	47.4

**SENSE 2014 Highest Aspects**

	NCTC	Cohort
Able to meet with an academic advisor at times convenient for me	79.4%	63.4%
An advisor helped me to select a course of study, program, or major	77.4%	62.1%
An advisor helped me to set academic goals and to create a plan for achieving them	51.0%	42.3%
An advisor helped me to identify the courses I needed to take during my first semester	85.8%	72.2%
A college staff member helped me determine whether I qualified for financial assistance	47.0%	36.5%

**SENSE 2014 Lowest Aspects**

	NCTC	Cohort
At least one instructor learned my name	79.9%	86.9%
Frequency: Asked questions in class or contributed to class discussions	91.1%	92.1%
Frequency: Prepared at least two drafts of a paper or assignment before turning it in	69.0%	71.8%
Frequency: Asked for help from an instructor regarding questions or problems related to a class	72.8%	76.5%
Frequency: Used writing, math, or other skill lab	17.2%	35.8%

Source: Northland Community and Technical College

This page intentionally left blank.