



NORTHLAND
COMMUNITY & TECHNICAL COLLEGE

2016

Based on Fall 2015 Data



Fact Book

Thief River Falls ♦ East Grand Forks

Compiled: February 2016
Revised September 2016

**Prepared by: Northeast Higher Education District
Office of Institutional Research**

Tracey Roy, Director
1851 East Highway 169
Grand Rapids, MN 55744
(218) 322-2409
tracey.roy@itascacc.edu

and

Billie Sikkila
1001 West Chestnut Street
Virginia, MN 55792
(218) 471-0011
b.sikkila@mesabirange.edu



NORTHLAND

COMMUNITY & TECHNICAL COLLEGE

East Grand Forks Campus
2022 Central Avenue NE
East Grand Forks, MN 56721

Thief River Falls Campus
1101 Highway One East
Thief River Falls, MN 56701

Aerospace Site
13892 Airport Drive
Thief River Falls, MN 56701

Roseau Site
121 Center St E. Suite 200
Roseau, MN 56751

Phone: 1.800.959.6282

www.northlandcollege.edu

Fact Book

The Northland Community & Technical College Fact Book provides general statistical and descriptive information about the college which may be useful to those engaged in planning, assessment, preparing reports, writing grant proposals or other endeavors within the college. The Fact Book is a reference tool that provides a picture of Northland for fiscal year 2016 by using fall 2015 data, along with historical trend data. While not all available data has been gathered, the data accurately represents the major areas of the college.

Data may differ from other college and state reports. Such variances result from source of information used, the date on which the report was generated or the reporting period included in the data. Trends should be tracked using identical data sources over time.

Data reflects student enrollment by either full-year equivalent (FYE), full-time equivalent (FTE), or headcount:

Student Full-Year Equivalent

A full-time enrollment equivalent for a year – total credits taken by all students over the academic year divided by 30 (the number of credits considered to be a full-time course load over the duration of the year).

Student Full-Time Equivalent

Student full-time equivalent for a semester – total credits taken during the semester for all students divided by 15.

Headcount

For this purpose, the headcount is the actual number of students enrolled at the 30th day of Fall Semester.

Northland Community & Technical College Mission and Vision

MISSION

Northland Community & Technical College is dedicated to creating a quality learning environment for all learners through partnership with students, communities, businesses, and other educational institutions.

VISION

Northland Community & Technical College will be widely recognized as a progressive leader in community and technical college education, responsive to the needs of our learners through the use of partnerships, innovation, and technology.

INSTITUTIONAL LEARNER OUTCOMES

1. **Communication Skills.** Students will be able to **communicate** effectively with a variety of audiences using verbal, non-verbal, listening, writing, interpersonal, and team skills.
2. **Critical Thinking Skills.** Students will be able to **separate** fact and opinion, recognize distinct points of view, and **analyze** and evaluate information, including mathematical information. Students will be able to **acknowledge** diverse values, and **employ** creativity and effective problem-solving skills in a variety of situations. Students will be able to **understand** implications and consequences of decision-making.
3. **Global and Civic Responsibility.** Students will be able to **interact** in ways that exhibit a sense of community and be sensitive to issues of cultural and global diversity, and understand the importance of exercising civic responsibility on local, regional, and national levels. Students will **understand** and **respect** the need to give service to others. Students will **respect** and **care** for our natural environment.
4. **Information and Applied Technology.** Students will be able to **access** and **analyze** appropriate information and/or resources using technology to solve problems.
5. **Personal Development.** Students will **develop** professional attitudes and habits of punctuality, honesty, respect, accountability, leadership, professional and personal integrity, and self-directedness while contributing to personal and group goals.

Accreditation

Northland Community and Technical College has maintained accreditation by the Higher Learning Commission of the North Central Association (www.ncahlc.org) since 1976.

Source: http://www.ncahlc.org/component/com_directory/Action,ShowBasic/Itemid,/instid,1794

Northland Community and Technical College Fact Book

TABLE OF CONTENTS

At-A-Glance Summary	1
Enrollment Trends	2-4
Fiscal Year Headcounts 2006 to 2015 (Table 1)	2
Historic & Projected Enrollment Trends (Table 2)	2
Headcount and FTE - 10 th Day - Fall Terms (Table 3)	3
Headcount and FTE - 30 th Day - Fall Terms (Table 4)	3
Full-time/Part-time - 30 th Day - Fall Terms (Table 5)	3
Average Credit Load by Term (Table 6)	4
Enrollment Trends (Chart 5)	4
Student Demographic and Academic Profile	5-12
Gender Distribution (Table 7)	5
Age Groups (Table 8)	5
Gender by Age Group – Fall 2015 (Table 9)	5
Traditional vs. Non-Traditional Age Students (Table 10)	6
Average Age (Table 11)	6
Race/Ethnicity (Table 12)	7
Ethnicity of New Students (Table 13)	7
Student Level (Table 14)	8
New Students (Table 15)	8
New Students by Admission Status (Table 16)	9
New/Return Students by Full-/Part-time Status - Fall 2015 (Table 17)	9
County of Residence (Table 18)	10
High School Attended of New Students (Table 19)	11
Financial Aid Comparison (Table 20)	12
Students Receiving Financial Aid (Table 21)	12
Academic Progress and Degrees Earned	13-23
Discipline Summary by FYE – 5 Year Comparison (Table 22)	13
Fall Majors Headcount by CIP Code – 5 Year Comparison (Table 23)	15
Fall Majors FYE by CIP Code – 5 Year Comparison (Table 24)	17
On-line Enrollment (Table 25)	18
Fall to Following Fall Retention – New, Full-time Students (Chart 14)	19
Fall to Spring Retention – New, Full-time Students (Chart 15)	19
Enrollment by Program (Table 26)	20
Degrees Awarded by Fiscal Year (Table 27)	20
Awards by Major by Fiscal Year (Table 28)	21
Persistence and Completion Rates for Fall 2011 Cohort (Table 29)	23
Persistence and Completion Rates for Fall 2012 Cohort (Table 30)	24
IPEDS 3-Year Graduation & Transfer-out Rates (Table 31)	25

Faculty and Staff	26
Employee Headcount (Table 32).....	26
Employee Full-Time Equivalent (Table 33)	26
Employee Diversity (Table 34)	26
 Regional Population and Employment	 27-2
Population Estimates for Region 1 2011-2015 (Table 35)	27
Projected 30-Year Population Change (Table 36).....	28
Polk County Population Projections by Age Group (Chart 20)	28
Pennington County Population Projections by Age Group (Chart 21).....	28
High School Enrollment for Area Districts (Table 37)	29
2015-2016 Enrollment for Area School Districts (K-12) (Table 38).....	29
Average Unemployment Rate (Table 39).....	30
 CCSSE/SENSE Benchmark Summary for NCTC	 31



At a Glance

Northland Community & Technical College

5-Year Comparison - Fall 30th Day Enrollment

	Fall 11	Fall 15
Headcount	3,912	3,491
FTE	2,504.6	2,123.0
New Students	38%	42%
Gender		
Female	57%	56%
Male	42%	41%
Student Load		
Full-time	45%	40%
Part-time	55%	60%
Average Credit Load		
Full-time	14.3	14.6
Part-time	5.7	5.5
All Students	9.6	9.1
Admission Category		
High School	10%	15%
Undergraduate Regular	40%	32%
Undergraduate Transfer	38%	34%
Undergraduate Other	13%	19%
Average Age		
Full-time	24.2	23.4
Part-time	28.4	26.2
All Students	26.5	25.1
Underrepresented	56%	48%
Students of Color	16%	18%
Pell Eligible	43%	33%
First Generation Minnesota	23%	19%
First Generation Federal (TRIO)	64%	58%

Source: MnSCU ISRS Operational Data; Fall 30th Day Enrollment, unknowns are included in the denominator

Definitions: FTE - full time equivalent per semester (total credits/15); full time student = 12 or more credits; Pell Eligible - receipt of or eligibility for federal need-based grant; First Generation Minnesota - neither parent received postsecondary education; First Generation Federal - neither parent has bachelor's degree, Student of Color - all racial-ethnic categories excluding White, Nonresident Alien and unknown status; Underrepresented Students - ONE or more attributes: student of color, Pell eligible, or first generation Minnesota.

This page intentionally left blank.

Enrollment Trends

Table 1
Fiscal Year Headcounts 2006 to 2015

	FY 2006	FY 2007	FY 2008	FY 2009	FY 2010	FY 2011	FY 2012	FY 2013	FY 2014	FY 2015
Summer I	1,037	1,097	1,055	1,120	1,204	1,182	1,025	882	923	852
Fall	3,956	4,373	5,156	5,380	5,752	5,668	5,360	5,497	5,092	4,877
Spring	4,430	4,466	5,219	5,352	5,703	5,429	5,187	5,268	5,026	4,504
FY Duplicated HC	9,423	9,936	11,430	11,852	12,659	12,279	11,572	11,647	11,041	10,233
FY Unduplicated HC	5,011	5,572	5,540	5,601	5,822	5,485	5,328	5,411	5,215	4,875

Source: MnSCU ISRS Operational Data/ITS Management Reports/Enrollment/FYE by Campus

Chart 1
Fiscal Year Unduplicated Headcount

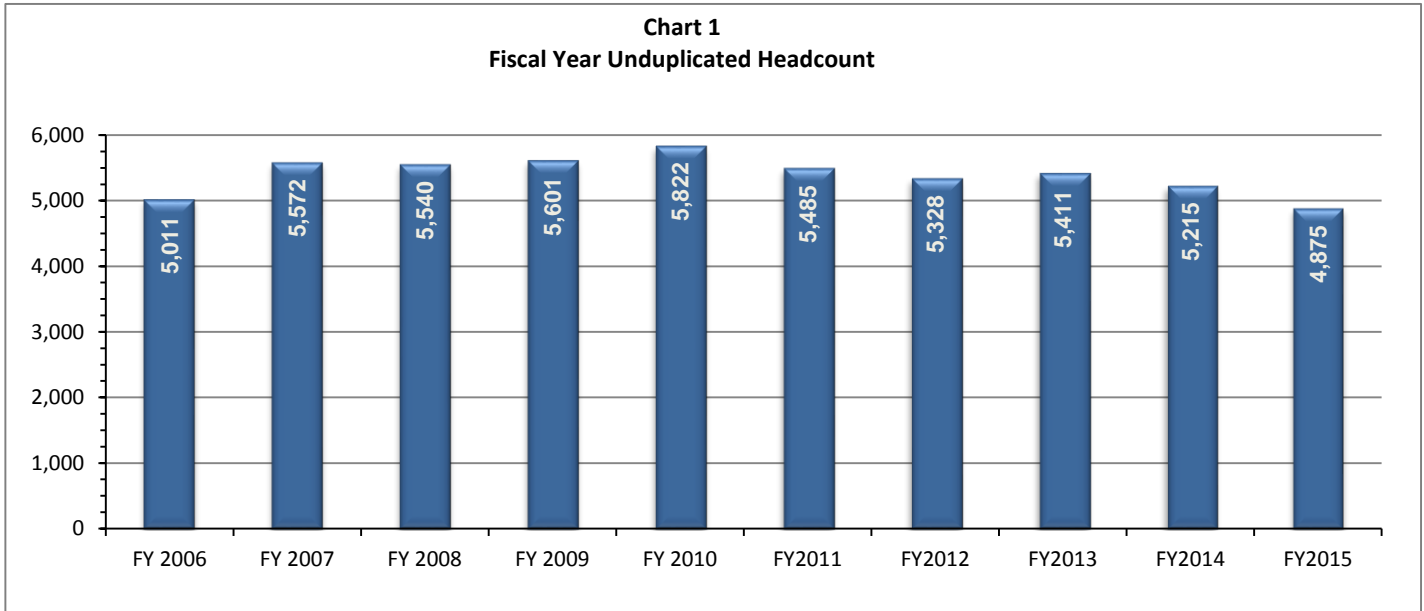


Table 2
Historic & Projected Enrollment Trends

	Actual FY2008	Actual FY2009	Actual FY2010	Actual FY2011	Actual FY2012	Actual FY2013	Actual FY2014	Actual FY2015	Projected FY2016	Projected FY2017	Projected FY2018
Northland	2,814	2,788	2,938	2,828	2,659	2,717	2,558	2,299	2,295	2,315	2,335

Source: MnSCU Finance Division as of November 2015

Chart 2
Historic and Projected Enrollment Trends

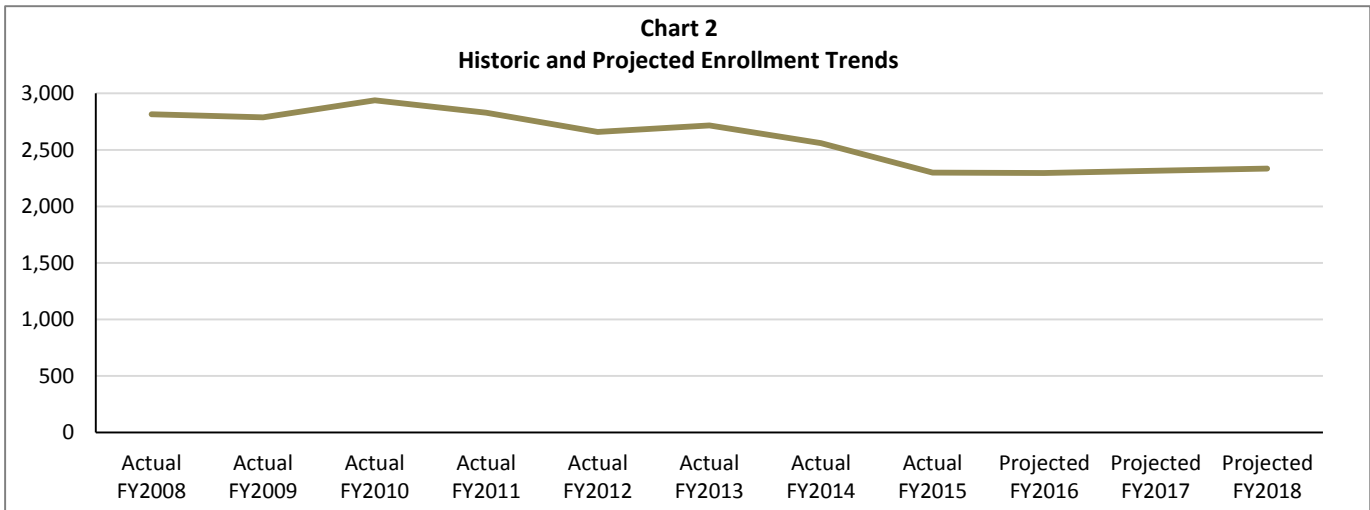


Table 3
Headcount and FTE - 10th Day - Fall Terms

	Fall 11	Fall 12	Fall 13	Fall 14	Fall 15
Headcount	3,761	3,835	3,618	3,465	3,343
FTE	2,463	2,546	2,415	2,199	2,080

Source: 10th Day Enrollment Tables, ST_03/MnSCU ISRS Operational Data, 1.11.16

Table 4
Headcount and FTE - 30th Day - Fall Terms

	Fall 11	Fall 12	Fall 13	Fall 14	Fall 15
Headcount	3,912	3,999	3,753	3,584	3,491
FTE	2,505	2,593	2,452	2,232	2,123

Source: 30th Day Enrollment Tables, ST_03/MnSCU ISRS Operational Data, 1.11.16

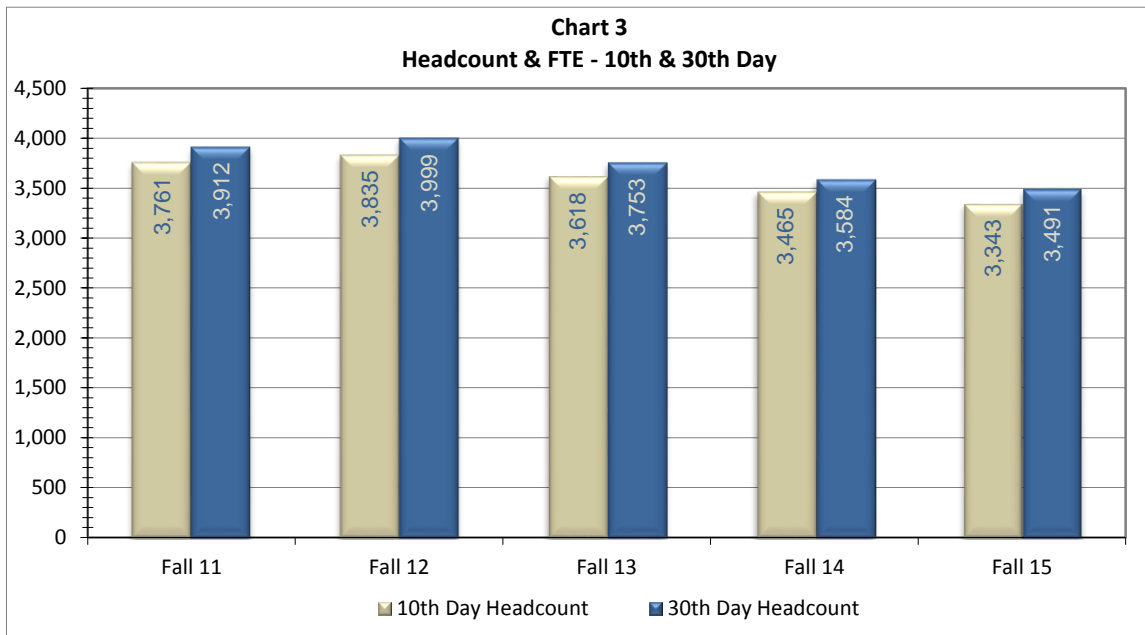


Table 5
Full-time/Part-time - 30th Day - Fall Terms

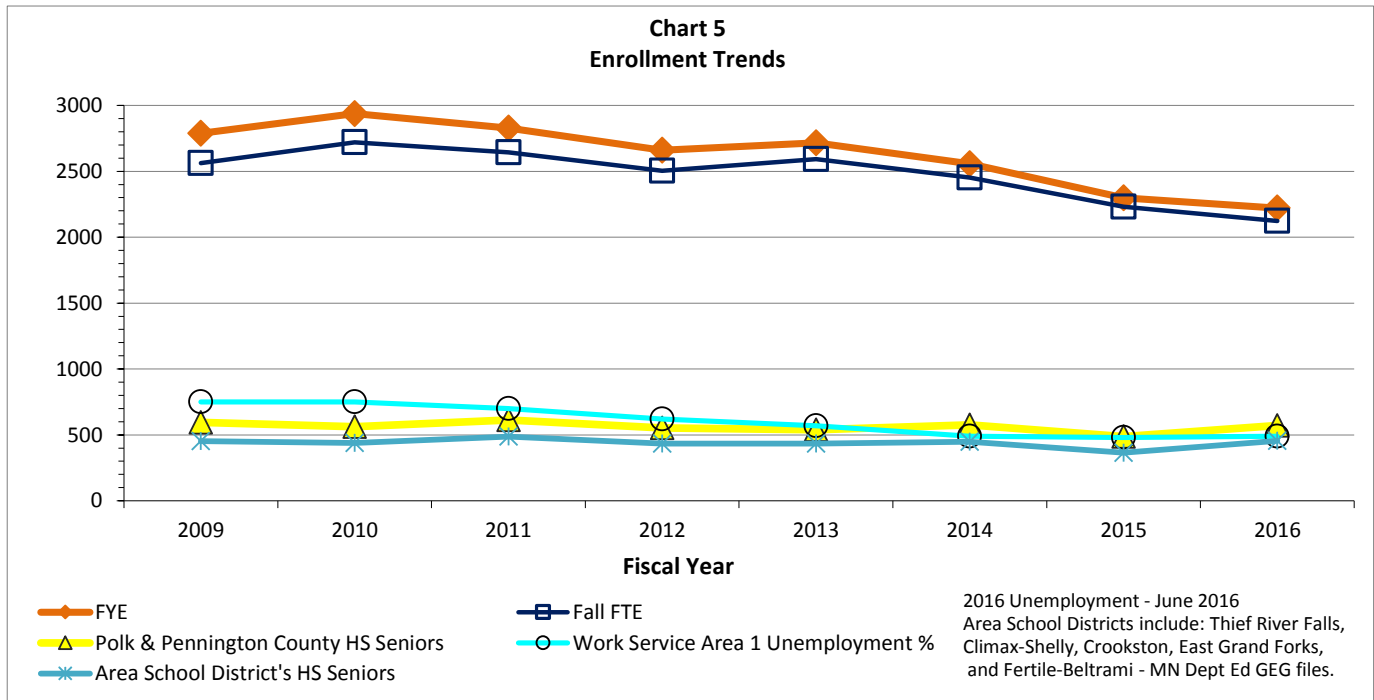
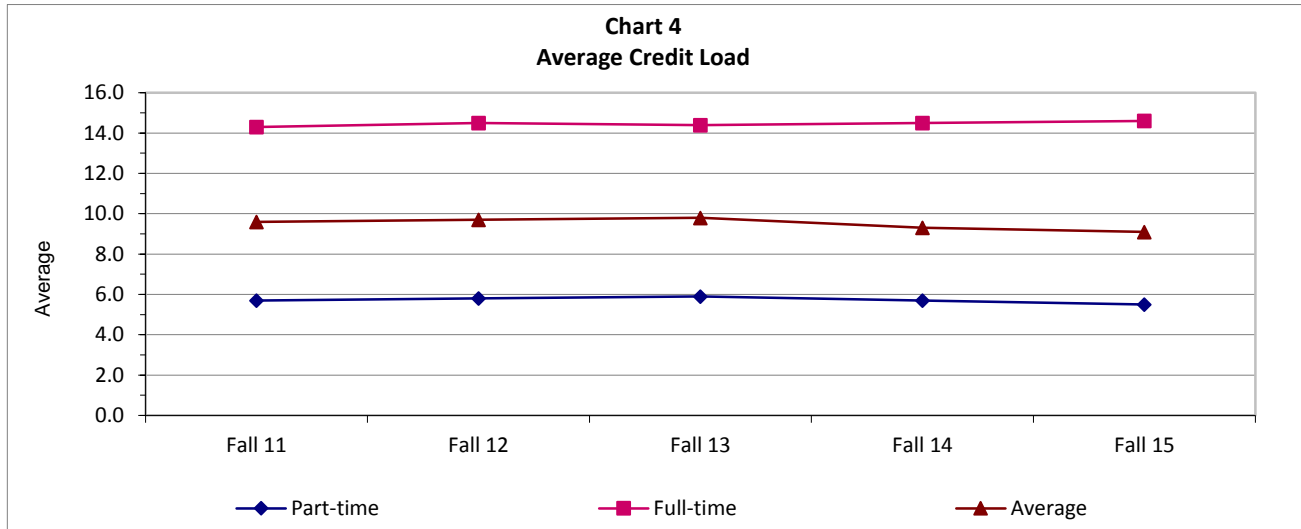
	Fall 11		Fall 12		Fall 13		Fall 14		Fall 15	
	Count	Percent	Count	Percent	Count	Percent	Count	Percent	Count	Percent
Part-time	2,139	55%	2,183	55%	2,034	54%	2,108	59%	2,102	60%
Full-time	1,773	45%	1,816	45%	1,719	46%	1,476	41%	1,389	40%
Total	3,912		3,999		3,753		3,584		3,491	

Source: 30th Day Enrollment Tables, ST_03/MnSCU ISRS Operational Data, 1.11.16

Table 6
Average Credit Load by Term

	Fall 11 Mean	Fall 12 Mean	Fall 13 Mean	Fall 14 Mean	Fall 15 Mean
Part-time	5.7	5.8	5.9	5.7	5.5
Full-time	14.3	14.5	14.4	14.5	14.6
Average	9.6	9.7	9.8	9.3	9.1

Source: 30th Day Enrollment Tables, ST_03/MnSCU ISRS Operational Data, 1.11.16



This page intentionally left blank.

Student Demographic and Academic Profile

Table 7
Gender Distribution

	Fall 11		Fall 12		Fall 13		Fall 14		Fall 15	
	Count	Percent	Count	Percent	Count	Percent	Count	Percent	Count	Percent
Male	1,662	42%	1,710	43%	1,621	43%	1,487	41%	1,444	41%
Female	2,236	57%	2,275	57%	2,119	56%	2,084	58%	1,967	56%
Unknown	14	0%	14	0%	13	0%	13	0%	80	2%
Total	3,912		3,999		3,753		3,584		3,491	

Source: 30th Day Enrollment Tables, ST_03/MnSCU ISRS Operational Data, 1.11.16

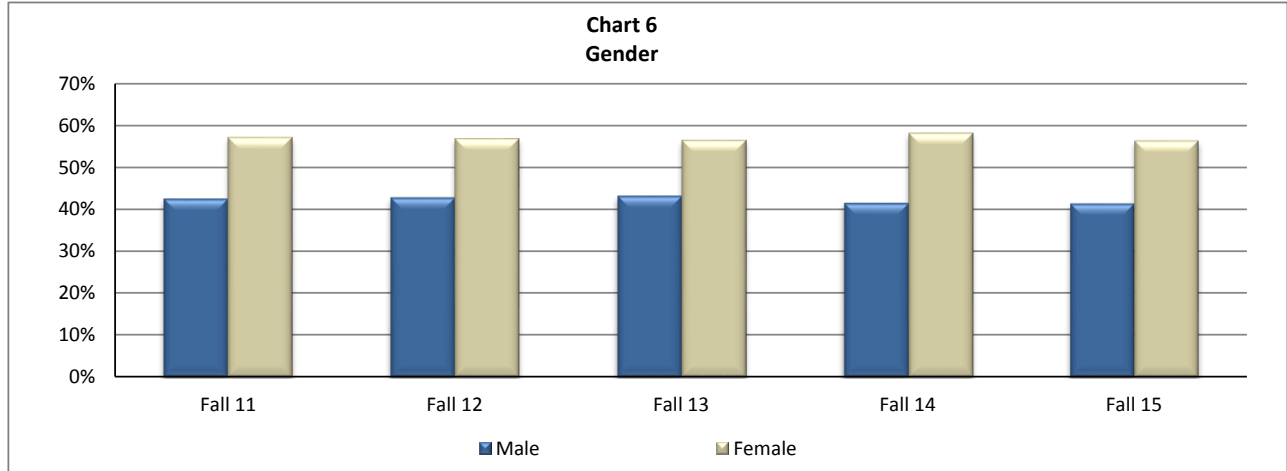


Table 8
Age Groups

	Fall 11		Fall 12		Fall 13		Fall 14		Fall 15	
	Count	Percent	Count	Percent	Count	Percent	Count	Percent	Count	Percent
Under 18	388	10%	482	12%	451	12%	512	14%	564	16%
18-20	1,053	27%	1,182	30%	1,127	30%	991	28%	950	27%
21-24	832	21%	801	20%	758	20%	742	21%	724	21%
25-29	541	14%	534	13%	471	13%	449	13%	414	12%
30-39	503	13%	482	12%	463	12%	457	13%	435	12%
40 and older	551	14%	500	12%	453	12%	404	11%	367	11%
No response	44	1%	20	0%	30	1%	29	1%	37	1%
Total	3,912		4,001		3,753		3,584		3,491	

Source: 30th Day Enrollment Tables, ST_03/MnSCU ISRS Operational Data, 1.11.16

Table 9
Gender by Age Group - Fall 2015

	Female		Male		Unknown		Total	
	Count	Percent	Count	Percent	Count	Percent	Count	Percent
Under 18	333	17%	170	12%	61	76%	564	16%
18-20	472	24%	472	33%	6	8%	950	27%
21-24	465	24%	257	18%	2	3%	724	21%
25-29	254	13%	158	11%	2	3%	414	12%
30-39	270	14%	164	11%	1	1%	435	12%
40 and older	169	9%	195	14%	3	4%	367	11%
No response	4	0%	28	2%	5	6%	37	1%
Total	1,967		1,444		80		3,491	

Source: 30th Day Enrollment Tables, ST_03/MnSCU ISRS Operational Data, 1.11.16

Table 10
Traditional Age (24 or less) vs. Non-Traditional Age Students

	Fall 11		Fall 12		Fall 13		Fall 14		Fall 15	
	Count	Percent	Count	Percent	Count	Percent	Count	Percent	Count	Percent
Traditional	2,273	58%	2,463	62%	2,336	62%	2,245	63%	2,238	64%
Non-traditional	1,595	41%	1,516	38%	1,387	37%	1,310	37%	1,216	35%
No response	44	1%	20	1%	30	1%	29	1%	37	1%
Total	3,912		3,999		3,753		3,584		3,491	

Source: 30th Day Enrollment Tables, ST_03/MnSCU ISRS Operational Data, 1.11.16

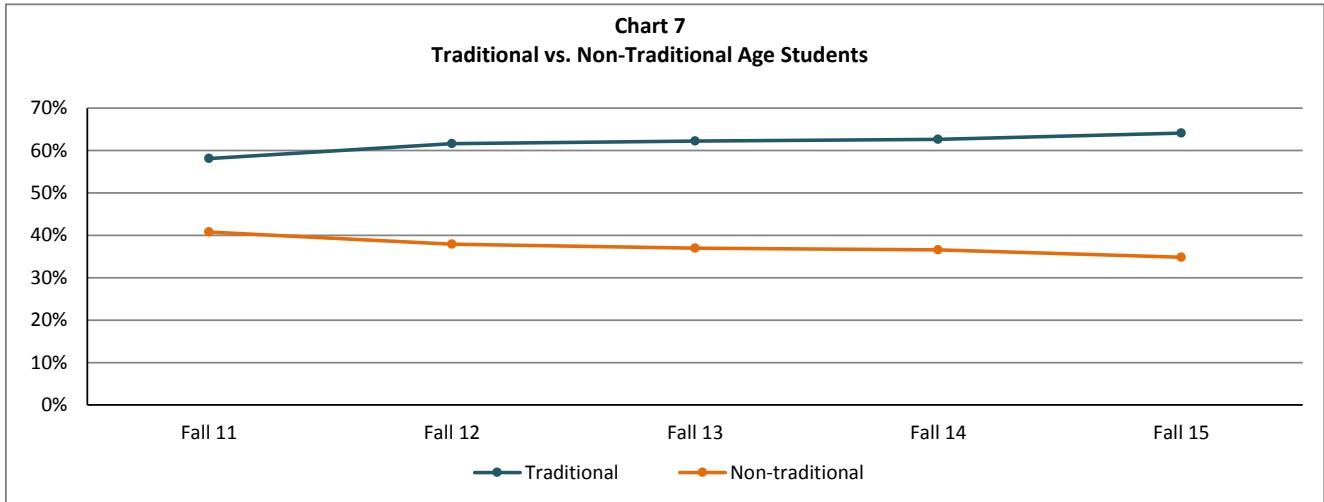


Table 11
Average Age

	All Students Mean	Full-Time Mean	Part-Time Mean
Fall 2011	26.5	24.2	28.4
Fall 2012	25.9	23.5	27.9
Fall 2013	25.8	23.1	28.0
Fall 2014	25.6	23.9	26.9
Fall 2015	25.1	23.4	26.2

Source: 30th Day Enrollment Tables, ST_03/MnSCU ISRS Operational Data, 1.11.16

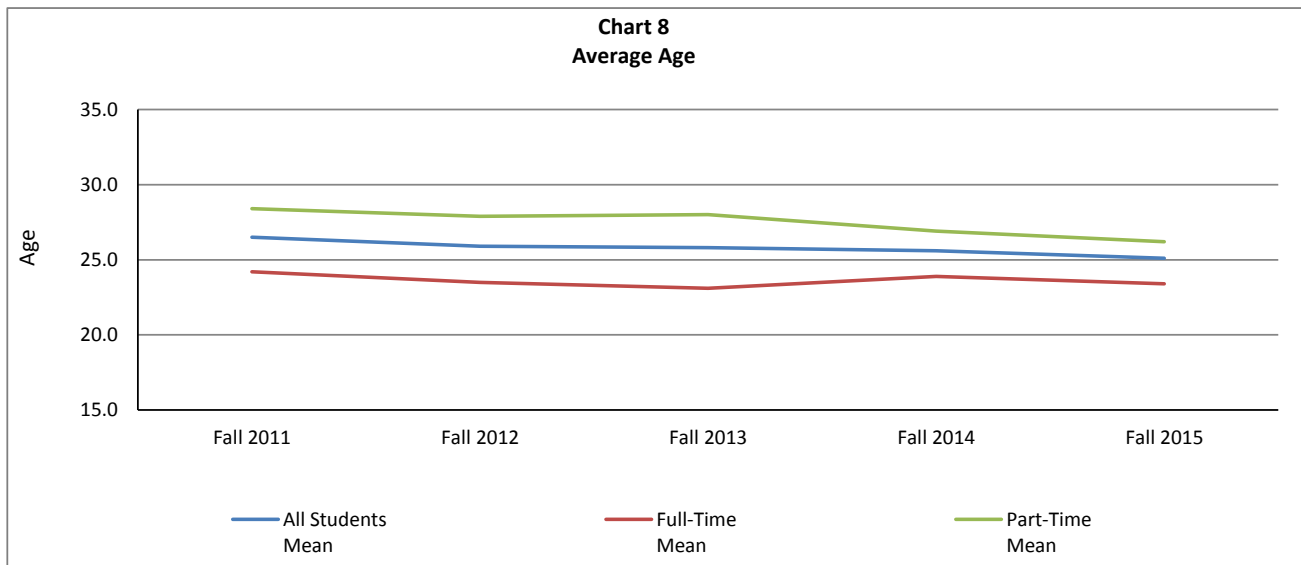


Table 12
Race/Ethnicity

	Fall 11		Fall 12		Fall 13		Fall 14		Fall 15	
	Count	Percent	Count	Percent	Count	Percent	Count	Percent	Count	Percent
African American	230	6%	222	6%	199	5%	189	5%	239	7%
Native American / Alaskan Native	136	3%	142	4%	120	3%	131	4%	130	4%
Asian	49	1%	40	1%	57	2%	78	2%	79	2%
Pacific Islander	3	0%	7	0%	7	0%	4	0%	6	0%
Hispanic	106	3%	103	3%	103	3%	98	3%	114	3%
White	3,327	85%	3,407	85%	3,181	85%	3,006	84%	2,705	77%
Unknown	61	2%	78	2%	86	2%	78	2%	218	6%
Total	3,912		3,999		3,753		3,584		3,491	

Source: 30th Day Enrollment Tables, ST_03/MnSCU ISRS Operational Data, 1.11.16

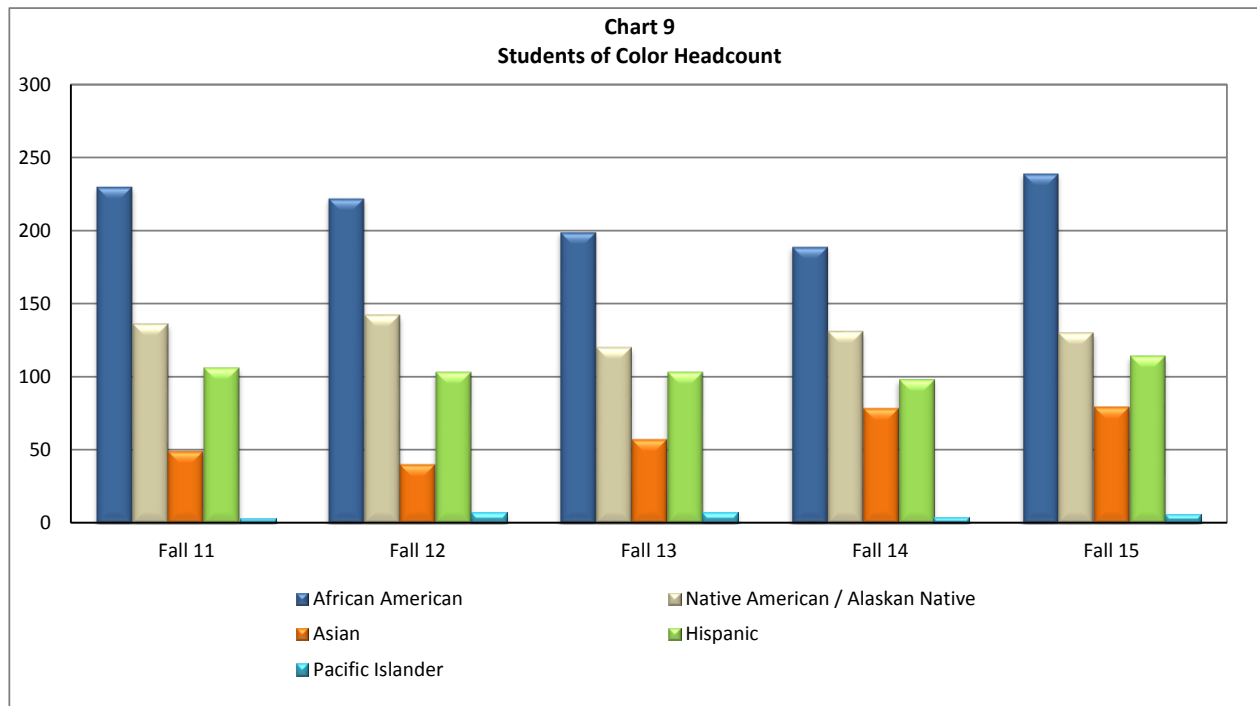


Table 13
Ethnicity of New* Students

	Fall 11		Fall 12		Fall 13		Fall 14		Fall 15	
	Count	Percent	Count	Percent	Count	Percent	Count	Percent	Count	Percent
African American	101	7%	95	6%	95	7%	85	6%	113	8%
Native American / Alaskan Native	64	4%	60	4%	52	4%	58	4%	61	4%
Hispanic/Asian/Hawaiian/ Pacific Islander	64	4%	65	4%	63	4%	89	6%	96	7%
White	1,204	82%	1,379	84%	1,172	82%	1,135	80%	1,007	69%
Unknown	43	3%	50	3%	42	3%	44	3%	176	12%
Total	1,476		1,649		1,424		1,411		1,453	

Source: 30th Day Enrollment Tables, ST_03/MnSCU ISRS Operational Data, 1.11.16

*New student in the summer or fall.

Table 14
Student Level

	Fall 11		Fall 12		Fall 13		Fall 14		Fall 15	
	Count	Percent	Count	Percent	Count	Percent	Count	Percent	Count	Percent
Freshman	2,018	52%	2,148	54%	1,979	53%	1,911	53%	2,013	58%
Sophomore	1,894	48%	1,851	46%	1,774	47%	1,673	47%	1,478	42%
Total	3,912		3,999		3,753		3,584		3,491	

Source: 30th Day Enrollment Tables, ST_03/MnSCU ISRS Operational Data, 1.11.16

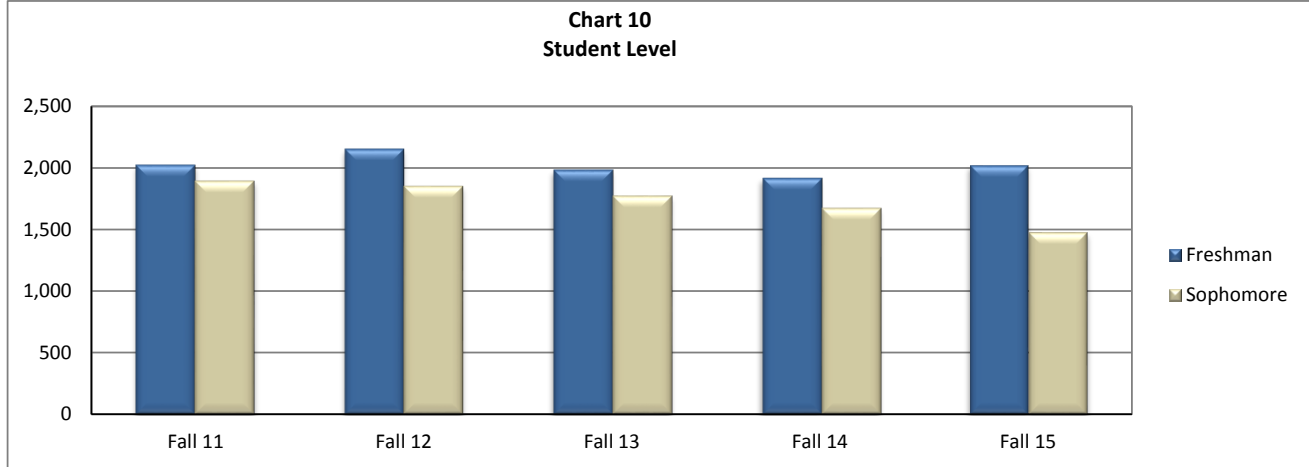


Table 15
New Students

	Fall 11		Fall 12		Fall 13		Fall 14		Fall 15	
	Count	Percent	Count	Percent	Count	Percent	Count	Percent	Count	Percent
New*	1,476	38%	1,649	41%	1,424	38%	1,411	39%	1,453	42%
Return	2,436	62%	2,350	59%	2,329	62%	2,173	61%	2,038	58%
Total	3,912		3,999		3,753		3,584		3,491	

Source: 30th Day Enrollment Tables, ST_03/MnSCU ISRS Operational Data, 1.11.16

*New student in the summer or fall.

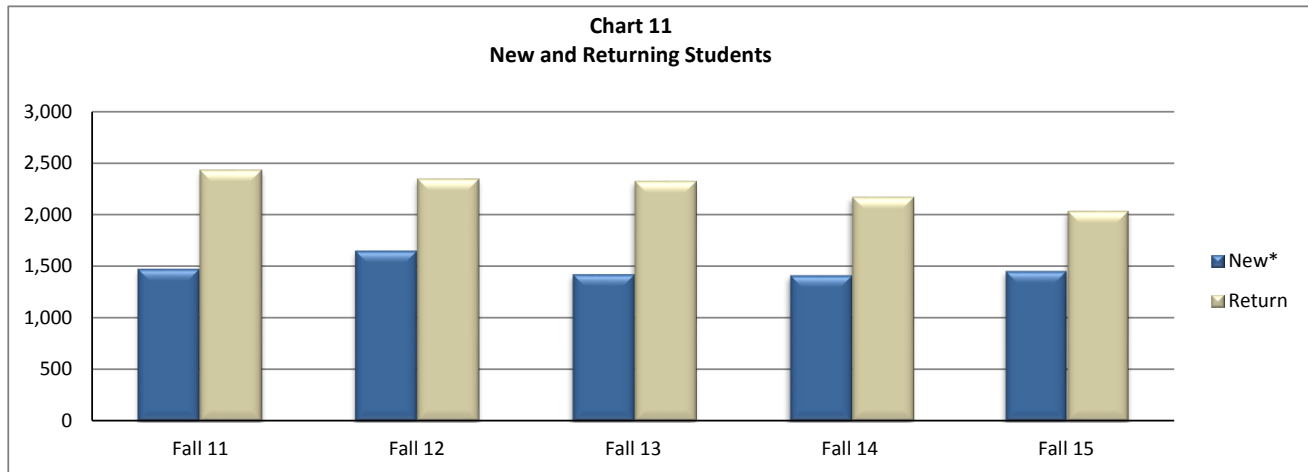


Table 16
New/Returning Students by Admission Status

	Fall 11		Fall 12		Fall 13		Fall 14		Fall 15	
	Count	Percent	Count	Percent	Count	Percent	Count	Percent	Count	Percent
New* Students										
Undergrad Regular	533	36%	607	37%	539	38%	417	30%	450	31%
Undergrad Transfer	334	23%	392	24%	350	25%	329	23%	264	18%
PSEO Regular	261	18%	331	20%	266	19%	356	25%	333	23%
Undergrad Unclassified	348	24%	319	19%	269	19%	309	22%	406	28%
Total New	1,476		1,649		1,424		1,411		1,453	
Returning Students										
Undergrad Regular	1031	42%	927	39%	851	37%	819	38%	663	33%
Undergrad Transfer	1052	43%	1032	44%	1014	44%	909	42%	873	43%
PSEO Regular	101	4%	118	5%	178	8%	135	6%	203	10%
Undergrad Unclassified	252	10%	273	12%	286	12%	310	14%	299	15%
Total Returning	2,436		2,350		2,329		2,173		2,038	
Total All	3,912		3,999		3,753		3,584		3,491	

Source: 30th Day Enrollment Tables, ST_03/MnSCU ISRS Operational Data, 1.11.16

*New student in the summer or fall.

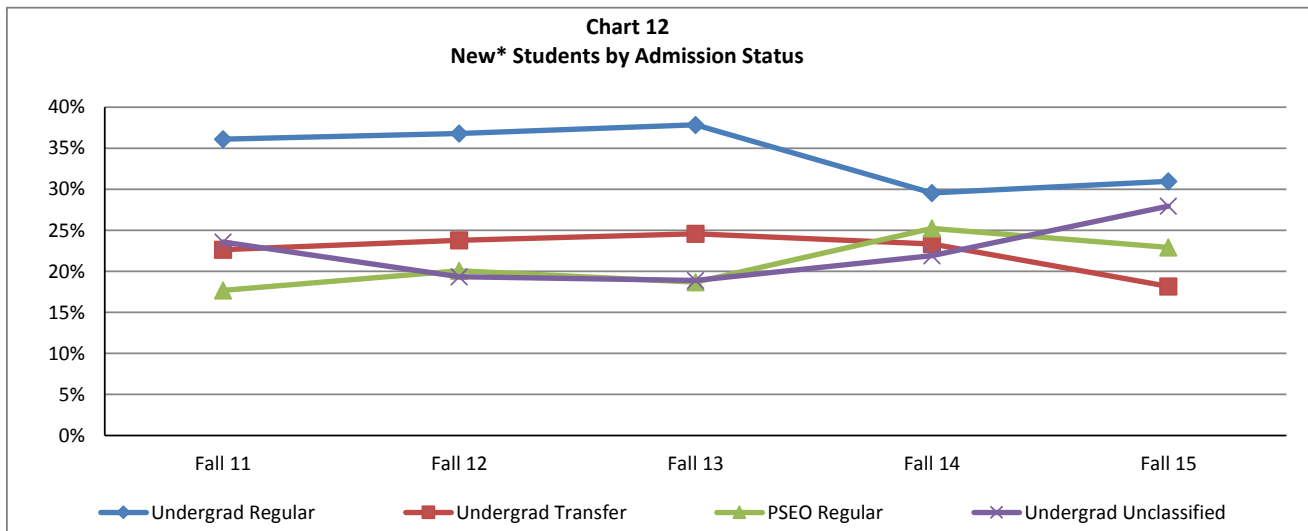


Table 17
New/Return Students by Full/Part-time Status - Fall 2015

	Part-time		Full-time		Total	
	Count	Percent	Count	Percent	Count	Percent
New*	900	43%	553	40%	1,453	42%
Returning	1,202	57%	836	60%	2,038	58%
Total	2,102		1,389		3,491	

Source: 30th Day Enrollment Tables, ST_03/MnSCU ISRS Operational Data, 1.11.16

*New student in the summer or fall.

Table 18
County of Residence

	Fall 11		Fall 12		Fall 13		Fall 14		Fall 15	
	Count	Percent	Count	Percent	Count	Percent	Count	Percent	Count	Percent
Polk	465	12%	521	13%	508	14%	481	13%	442	13%
Pennington	283	7%	263	7%	295	8%	332	9%	351	10%
Marshall	144	4%	144	4%	144	4%	190	5%	192	5%
Roseau	166	4%	157	4%	147	4%	154	4%	155	4%
Red Lake	71	2%	64	2%	76	2%	75	2%	75	2%
Kittson	55	1%	52	1%	65	2%	74	2%	73	2%
Clearwater	57	1%	52	1%	59	2%	58	2%	69	2%
Hennepin	53	1%	53	1%	36	1%	56	2%	47	1%
Beltrami	39	1%	33	1%	31	1%	46	1%	45	1%
Clay	72	2%	69	2%	58	2%	48	1%	45	1%
Norman	54	1%	61	2%	63	2%	64	2%	43	1%
Mahnomen	24	1%	40	1%	51	1%	51	1%	42	1%
Hubbard	25	1%	18	0%	27	1%	14	0%	32	1%
Becker	23	1%	20	1%	28	1%	26	1%	22	1%
Otter Tail	46	1%	31	1%	29	1%	24	1%	20	1%
Dakota	18	0%	19	0%	14	0%	13	0%	15	0%
Ramsey	4	0%	8	0%	9	0%	14	0%	15	0%
Itasca	6	0%	11	0%	7	0%	10	0%	12	0%
Crow Wing	10	0%	12	0%	11	0%	10	0%	10	0%
Anoka	16	0%	11	0%	9	0%	9	0%	9	0%
Stearns	9	0%	7	0%	13	0%	13	0%	9	0%
Lake of the Woods	13	0%	18	0%	13	0%	11	0%	8	0%
Douglas	6	0%	7	0%	8	0%	6	0%	7	0%
St. Louis	12	0%	11	0%	14	0%	12	0%	7	0%
Wright							9	0%	7	0%
Wadena	9	0%	8	0%	6	0%	3	0%	6	0%
Cass	3	0%	6	0%	6	0%	6	0%	5	0%
Koochiching	7	0%	6	0%	4	0%	10	0%	5	0%
Washington	5	0%	4	0%	12	0%	7	0%	4	0%
Wilkin	5	0%	4	0%	4	0%	3	0%	3	0%
Other MN*	75	2%	67	2%	59	2%	55	2%	57	2%
North Dakota	1013	26%	1169	29%	1137	30%	1008	28%	941	27%
Out of State	158	4%	155	4%	168	4%	136	4%	180	5%
Unknown (MN)	181	5%	141	4%	118	3%	82	2%	62	2%
Unknown	785	20%	757	19%	524	14%	474	13%	476	14%
Total	3,912		3,999		3,753		3,584		3,491	

Source: 30th Day Enrollment Tables, ST_03/MnSCU ISRS Operational Data, 1.11.16

2011 "Other" includes 32 counties
2012 "Other" includes 28 counties

2013 "Other" includes 32 counties
2014 "Other" includes 27 counties

2015 "Other" includes 33 counties

Table 20
Financial Aid Comparison

		Gift Aid	Loans	Work Study
	Northland CTC (FY15)	38%	60%	2%
	Northland CTC (FY14)	34%	64%	2%
	Northland CTC (FY13)	32%	66%	2%
Fiscal Year 15	MNSCU 2 yr	41%	57%	1%
	MNSCU 4 yr	33%	65%	1%
	University of MN	46%	53%	1%
	Private 4 yr (Not for Profit)	65%	34%	1%
	Private For-Profit Schools	34%	66%	0%
	All MN Institutions	49%	50%	1%

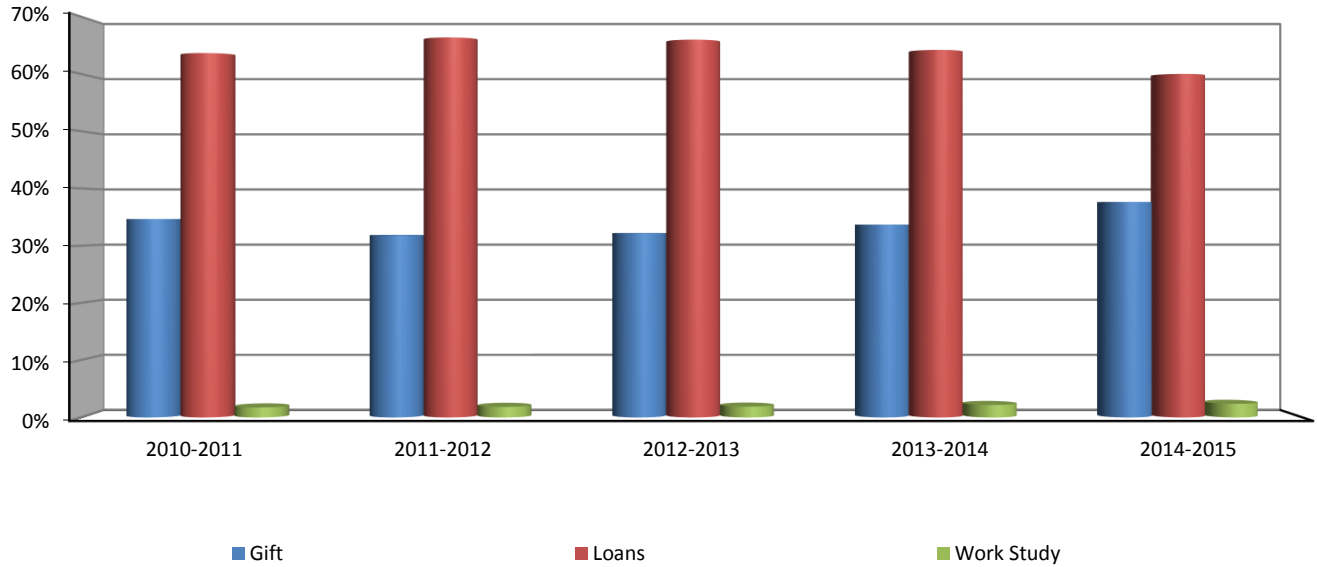
Source: MN Office of Higher Ed/Research, Data & Reports/Financial Aid Data/8.5.16

Table 21
Students Receiving Financial Aid

	2010-2011		2011-2012		2012-2013		2013-2014		2014-2015	
	Amount	Percent	Amount	Percent	Amount	Percent	Amount	Percent	Amount	Percent
Gift	8,152,562	35%	7,319,963	32%	7,407,968	32%	7,099,710	34%	6,949,694	38%
Loans	14,963,547	64%	15,255,613	66%	15,185,388	66%	13,528,697	64%	11,068,721	60%
Work Study	409,027	2%	424,020	2%	433,391	2%	459,855	2%	439,953	2%
Total \$	23,525,136		22,999,596		23,026,747		21,088,262		18,458,368	

Source: College Financial Aid Data

Chart 13
Financial Aid Trends



Academic Progress and Degrees Earned

Table 22
Discipline Summary by FYE - 5 Year Comparison

Subject	Discipline Description	FY 2012	FY 2013	FY 2014	FY 2015	FY 2016	FY 2015 FYE %	5 Yr Difference	5 Yr Difference %
ACCT	Accounting	41.4	39.1	31.0	25.6	25.2	1%	-16.3	-0.4
ADMM	Medical Admin Secretary	30.3	25.2	24.9	22.3	14.2	1%	-16.1	-0.5
ADMS	Administrative Secretary	31.7	27.7	27.6	23.8	20.5	1%	-11.2	-0.4
AGRI	Farm Operations Management	27.1	28.3	27.8	22.8	24.8	1%	-2.3	-0.1
ANTH	Anthropology	17.5	18.8	20.5	21.4	20.9	1%	3.4	0.2
ARCH	Architectural Technology	27.2	30.9	32.1	28.8	31.8	1%	4.6	0.2
ART/ARTS	Art	25.7	27.9	27.7	26.0	24.7	1%	-0.9	0.0
AUBO	Auto Body Collision Technology	18.8	17.5	15.4	17.8	21.0	1%	2.2	0.1
AUMO	Automotive Service Tech	42.6	31.4	27.2	25.7	27.1	1%	-15.5	-0.4
AVET	Aviation Electronics Tech			5.2	3.4	3.4	0%	3.4	0.0
AVIA	Aviation Maintenance Tech	85.6	88.8	74.0	82.6	72.7	3%	-12.8	-0.2
BIOL	Biology	232.9	257.7	240.1	226.3	222.2	10%	-10.8	0.0
BLDG	Building Technology	5.8	10.0	7.3	4.6	6.5	0%	0.8	0.1
BUS/BUSN	Business	27.4	33.1	30.9	24.0	25.2	1%	-2.2	-0.1
CARP	Carpentry	15.3	15.7	14.6	14.2	7.0	0%	-8.3	-0.5
CDEV	Early Childhood and Paraprofessiona	16.9	16.4	19.5	20.5	20.0	1%	3.0	0.2
CHEM	Chemistry	35.0	34.7	37.5	34.6	32.9	1%	-2.1	-0.1
CLST	Phlebotomy	1.0	2.0				0%	-1.0	-1.0
CMAE	360 Programs/Ctr. Mfg/Mfg & Appli	0.3	0.9	1.5	5.6	5.1	0%	4.8	15.5
COMM	Communications		0.8	0.4	0.4	0.3	0%	0.3	0.0
CONE	Construction Electricity	48.9	45.5	39.5	38.5	43.2	2%	-5.6	-0.1
CPTR	Computer Network Tech	78.0	87.2	76.5	68.2	60.5	3%	-17.5	-0.2
CRJU	Criminal Justice - Law Enforcement	47.4	34.8	28.7	28.4	34.7	2%	-12.8	-0.3
CRLT	Career Related Topics	4.9	5.2	5.3	4.2	3.5	0%	-1.4	-0.3
CSBT	Computer Science Business	0.2	0.1				0%	-0.2	-1.0
CVOP	Commercial Vehicle Oper	19.2	10.7	9.0	13.8	12.6	1%	-6.6	-0.3
CVST	Cardiovascular Technology	8.3	6.9	5.0	7.3	1.1	0%	-7.2	-0.9
DMED	Digital Media				3.4	0.5	0%	0.5	0.0
ECE					0.1		0%	0.0	0.0
ECON	Economics	23.5	21.5	21.7	20.1	21.9	1%	-1.6	-0.1
EDUC	Education			0.1	1.3	0.9	0%	0.9	0.0
ELTR	CTCE-Electronics Tech	10.4	7.9	8.3	8.6	12.0	1%	1.6	0.2
EMTB	Emergency Medical Tech	8.5	7.7	8.7	4.9	8.8	0%	0.3	0.0
EMTP	Paramedicine	18.6	18.4	12.2	11.4	11.8	1%	-6.9	-0.4
ENGL	English	183.4	209.3	200.2	176.0	172.0	8%	-11.4	-0.1
ETAS	Electronics Technology	14.5	12.1	13.8	18.5	20.1	1%	5.5	0.4
FBMT	Farm Business Management	145.1	135.3	126.2	113.1	102.1	5%	-43.0	-0.3
FIRE	Fire Technology	25.5	29.9	35.4	27.3	14.8	1%	-10.7	-0.4
FITN	Fitness Specialist		2.5	1.9	0.3		0%	0.0	0.0
FYEC	Pathways to Success			11.0	8.0	6.5	0%	6.5	0.0
GEOG	Geography	1.5	0.3	1.2	0.9	1.1	0%	-0.5	-0.3
GINT	Geospatial Intelligence Analysis			5.1	12.3	8.2	0%	8.2	0.0
GTEC	General Courses/Technology/Study	0.9	0.3	1.0	0.4	0.5	0%	-0.4	-0.4
HEAT	HVAC - Heating, Ventilation,...	8.7	21.4	12.5	7.6	17.3	1%	8.5	1.0
HIST	History	49.4	47.8	36.0	33.9	34.3	2%	-15.1	-0.3
HLTH	Health Education	78.5	88.6	74.2	61.6	55.5	2%	-23.0	-0.3
HPER	Health, Physical Education,	28.5	31.4	31.3	23.0	27.0	1%	-1.6	-0.1
HUM/HUMN	Humanities	7.8	9.2	4.8	8.0	5.0	0%	-2.8	-0.4
IMAG	Imagery Analyst		12.3	36.0	17.8	2.2	0%	2.2	0.0
ITEC	Information Technology	0.5	0.3				0%	-0.5	-1.0
JOUR	Journalism				3.2	2.2	0%	2.2	0.0

Subject	Discipline Description	FY 2012	FY 2013	FY 2014	FY 2015	FY 2016	FY 2015 FYE %	5 Yr Difference	5 Yr Difference %
LEGL	Legal Administrative Assistant	0.1					0%	-0.1	-1.0
MANF	CTCE-Manufacturing	1.7	3.1	1.4	2.4	0.7	0%	-1.0	-0.6
MATH	Mathematics	203.4	214.4	210.4	171.9	166.4	7%	-37.0	-0.2
MFPT	Manufacturing Process T	1.4	1.5	0.3	0.3		0%	-1.4	-1.0
MKTG	Sales, Marketing, Manage	43.4	46.0	42.5	37.9	35.1	2%	-8.3	-0.2
MSTH	Massage Therapy	11.5	8.2	7.1	6.8	0.1	0%	-11.4	-1.0
MUSC	Music	27.5	31.4	28.7	25.2	20.6	1%	-6.9	-0.3
NMED	New Media	5.5	8.1	3.6			0%	-5.5	-1.0
NSCI	Natural Science	11.9	14.5	18.5	13.6	6.9	0%	-5.0	-0.4
NURS	Nursing - Registered	68.2	62.2	63.2	64.5	59.6	3%	-8.6	-0.1
OTAC	Occupational Therapy Asst	23.9	23.9	21.0	26.6	30.4	1%	6.5	0.3
PAET	Precision Agriculture Equipment Tec					2.9	0%		
PHIL	Philosophy	108.1	102.3	92.5	83.0	76.1	3%	-32.1	-0.3
PHLB	Phlebotomy			1.2	1.1	1.1	0%	1.1	0.0
PHRM	Pharmacy Technology	14.2	13.1	10.7	10.3	12.5	1%	-1.7	-0.1
PHYS	Physics	2.0	0.9	3.1	2.6	2.9	0%	0.9	0.4
PLBG	Plumbing Technology	5.7	5.5	10.7	4.9	6.1	0%	0.4	0.1
PLSC/POLS/PSCI	Political Science	15.1	14.4	15.9	8.5	9.7	0%	-5.4	-0.4
PNSG	Practical Nursing	193.6	179.6	165.8	153.2	161.8	7%	-31.8	-0.2
PPT		0.1					0%	-0.1	-1.0
PSYC	Psychology	97.5	93.9	90.3	75.4	68.3	3%	-29.2	-0.3
PTAS	Physical Therapist Asst	25.5	28.3	29.7	25.9	28.6	1%	3.0	0.1
RADT	Radiologic Technology	29.9	28.8	27.3	29.2	27.7	1%	-2.2	-0.1
READ	Reading	24.1					0%	-24.1	-1.0
REFR	Refrigeration/Heating,Vent,AC	2.4	5.8	3.2	1.9		0%	-2.4	-1.0
RESP	Respiratory Care Therapist	22.2	22.9	16.8	16.7	20.4	1%	-1.8	-0.1
SCMT	Specialty Crops Management	4.3					0%	-4.3	-1.0
SOC/SOCI	Sociology	54.8	58.7	63.6	53.1	53.3	2%	-1.5	0.0
SOCS	Social Sciences	2.7	2.8	1.9	1.5	2.7	0%	0.0	0.0
SPAN	Spanish	9.8	10.7	8.8	5.9	8.0	0%	-1.8	-0.2
SPCH	Speech	69.1	71.5	65.4	57.4	57.6	3%	-11.5	-0.2
SSCI	General Courses	23.6	25.4	21.2	18.9	15.1	1%	-8.6	-0.4
SUPL	Supervisory Management	0.4	0.9	1.4	1.2	1.6	0%	1.3	3.5
SURT	Surgical Technology	23.8	22.7	18.0	16.3	18.2	1%	-5.6	-0.2
UAST	Unmanned Aerial System	3.4	18.7	9.0	4.3	2.9	0%	-0.4	-0.1
WELD	Welding Technology	33.5	43.2	34.6	26.7	37.3	2%	3.8	0.1
Total		2,658.9	2,717.0	2,558.3	2,299.3	2,220.2		-438.6	-0.2

Source: MnSCU ISRS Operational Data, ST06-Students by Course, SUBJ, 9.12.16

FYE=Student Full Year Equivalent

Table 23
Fall Majors Headcount by CIP Code - 5 Year Comparison
Sorted by Fall 2015 Headcount - Descending Order

CIP Code	Major/CIP Code Description	Fall 2011	Fall 2012	Fall 2013	Fall 2014	Fall 2015	% Change from 2014	5 Yr Difference	5 Yr Difference %
240101	Liberal Arts and Sciences	670	681	699	544	505	-7%	-165.0	-25%
513901	Licensed Practical	547	538	477	505	439	-13%	-108.0	-20%
512601	Health Aide					402	0%	402.0	0%
010104	Farm/Farm and Ranch M	340	301	326	266	238	-11%	-102.0	-30%
513801	Registered Nursing/Re	163	194	170	140	175	25%	12.0	7%
240102	General Studies				475	149	-69%	149.0	0%
520201	Business Administration	43	67	55	75	94	25%	51.0	119%
430107	Criminal Justice/Poli	85	73	62	59	71	20%	-14.0	-16%
510911	Radiologic Technology	99	93	82	80	69	-14%	-30.0	-30%
510803	Occupational Therapis	58	59	58	55	57	4%	-1.0	-2%
470607	Airframe Mechanics an	66	70	56	65	55	-15%	-11.0	-17%
510806	Physical Therapy Tech	62	78	64	58	53	-9%	-9.0	-15%
510909	Surgical Technology/T	47	46	55	55	53	-4%	6.0	13%
521801	Sales, Distribution,	69	82	77	67	48	-28%	-21.0	-30%
131501	Teacher Assistant/Aid	47	42	48	52	46	-12%	-1.0	-2%
110901	Computer Systems Netw	67	64	78	59	45	-24%	-22.0	-33%
480508	Welding Technology/We	37	53	44		42	0%	5.0	14%
460302	Electrician	43	44	39	38	40	5%	-3.0	-7%
510908	Respiratory Care Ther	42	37	32	38	39	3%	-3.0	-7%
520302	Accounting Technology	62	58	51	34	39	15%	-23.0	-37%
151303	Architectural Draftin	36	41	34	34	33	-3%	-3.0	-8%
470604	Automobile/Automotive	53	46	33	34	32	-6%	-21.0	-40%
510805	Pharmacy Technician/A	51	35	28	33	32	-3%	-19.0	-37%
510904	Emergency Medical Tec	53	51	35	28	30	7%	-23.0	-43%
150406	Automation Engineer T		18	18	31	28	-10%	28.0	0%
520401	Administrative Assist	33	35	27	28	27	-4%	-6.0	-18%
430201	Fire Prevention and S	38	36	53	45	26	-42%	-12.0	-32%
470603	Autobody/Collision an	20	17	15	20	24	20%	4.0	20%
510000	Health Services/Allied			11	22	24	9%	24.0	0%
290203	Signal/Geospatial Int			44	51	20	-61%	20.0	0%
470201	Heating, Air Conditio	32	36	25	11	19	73%	-13.0	-41%
510713	Medical Insurance Cod	31	21	20	29	19	-34%	-12.0	-39%
510716	Medical Administrativ	43	38	40	27	14	-48%	-29.0	-67%
490205	Truck and Bus Driver/	11	8	1	13	12	-8%	1.0	9%
521909	Special Products Mark	16	14	15	13	10	-23%	-6.0	-38%
460201	Carpentry/Carpenter	19	20	17	17	8	-53%	-11.0	-58%
460503	Plumbing Technology/P	6	9	9	7	8	14%	2.0	33%
511009	Phlebotomy Technician	7	10	8	5	8	60%	1.0	14%
510710	Medical Office Assist	3	13	8	5	7	40%	4.0	133%
470609	Avionics Maintenance					5	0%	5.0	0%
10205	Agricultural Mechanic					4	0%	4.0	0%
111006	Computer Support Spec	3	3	1	1	4	300%	1.0	33%
010103	Agricultural Economic	34	26	23	17	3	-82%	-31.0	-91%
090702	Digital Communication	12	12	8	3	2	-33%	-10.0	-83%
150613	Manufacturing Engineering	21			1	2	100%	-19.0	-90%
430203	Fire Science/Fire-fig	3	6	1	1	2	100%	-1.0	-33%
510708	Medical Transcription	15	6	8	9	2	-78%	-13.0	-87%
513103	Dietetic Technician					2	0%	2.0	0%
513501	Massage Therapy/Thera	20	13	12	12	2	-83%	-18.0	-90%
520204	Office Management and	2	1	3		2	0%	0.0	0%
510901	Cardiovascular Techno	16	15	17	15	1	-93%	-15.0	-94%
513902	Nursing Assistant/Aid	4	4	1	7	1	-86%	-3.0	-75%
010301	Agricultural Production	27	36				0%	-27.0	-100%
010304	Crop Production	19					0%	-19.0	-100%

CIP Code	Major/CIP Code Description	Fall 2011	Fall 2012	Fall 2013	Fall 2014	Fall 2015	% Change from 2014	5 Yr Difference	5 Yr Difference %
090701	Radio and Television	1	6				0%	-1.0	-100%
150303	Electrical, Electroni	1	3	2			0%	-1.0	-100%
150702	Quality Control Techn	2					0%	-2.0	-100%
310507	Physical Fitness Tech		4	8	1		-100%	0.0	0%
439999	Homeland Security, La			1			0%	0.0	0%
480503	Machine Shop Technolo			1	36		-100%	0.0	0%
490101	Aeronautics/Aviation/	3	18	8	1		-100%	-3.0	-100%
520203	Logistics, Materials,	1	1	1			0%	-1.0	-100%
520205	Operations Management	1					0%	-1.0	-100%
520207	Customer Service Mana	3	1		3		-100%	-3.0	-100%
520301	Accounting	1					0%	-1.0	-100%
	Unknown/Blank	724	816	744	359	419	17%	-305.0	-42%
Total		3,912	3,999	3,753	3,584	3,491	-3%	-421.0	-11%

Source: 30th Day Enrollment Tables, ST_03/MnSCU ISRS Operational Data, 1.11.16

Table 24
Fall Majors FYE by CIP Code - 5 Year Comparison
Sorted by Fall 2015 FYE - Descending Order

CIP Code	Major/CIP Code Description	Fall 2011	Fall 2012	Fall 2013	Fall 2014	Fall 2015	% Change from 2014	5 Yr Difference	5 Yr Difference %
240101	Liberal Arts and Sciences	250.8	258.4	287.5	203.5	193.2	-5%	-57.6	-23%
513901	Licensed Practical	201.3	197.6	165.4	178.8	161.4	-10%	-39.9	-20%
512601	Health Aide			59.2		63.1	0%	63.1	0%
513801	Registered Nursing/Re	50.0	60.1	58.2	40.3	51.6	28%	1.6	3%
010104	Farm/Farm and Ranch M	55.5	47.6	53.9	44.9	38.7	-14%	-16.8	-30%
430107	Criminal Justice/Poli	42.7	35.4	30.4	30.6	36.1	18%	-6.6	-15%
470607	Airframe Mechanics an	46.4	47.1	35.9	42.9	35.5	-17%	-10.9	-24%
520201	Business Administration	16.0	25.2	19.8	23.7	29.8	26%	13.8	86%
460302	Electrician	26.2	26.6	23.3	23.5	25.9	10%	-0.3	-1%
510911	Radiologic Technology	37.6	34.9	29.4	29.8	25.3	-15%	-12.3	-33%
240102	General Studies				75.5	23.2	-69%	23.2	0%
480508	Welding Technology/We	20.2	27.1	22.3	17.9	21.9	23%	1.7	9%
510803	Occupational Therapis	19.7	21.5	20.2	19.0	20.1	6%	0.4	2%
510909	Surgical Technology/T	19.1	17.7	19.8	19.6	19.5	0%	0.4	2%
510806	Physical Therapy Tech	25.3	27.6	25.1	21.1	19.4	-8%	-5.9	-23%
110901	Computer Systems Netw	25.9	25.5	30.1	23.1	17.5	-24%	-8.4	-32%
151303	Architectural Draftin	17.1	20.2	17.8	16.9	17.5	3%	0.4	2%
521801	Sales, Distribution,	27.3	33.7	29.0	26.0	17.0	-35%	-10.3	-38%
470604	Automobile/Automotive	27.0	22.4	16.0	16.9	16.7	-1%	-10.3	-38%
131501	Teacher Assistant/Aid	15.7	15.8	17.6	18.0	15.3	-15%	-0.4	-3%
510908	Respiratory Care Ther	16.5	15.2	12.2	14.0	14.6	5%	-1.9	-11%
520302	Accounting Technology	22.3	21.6	19.4	12.4	13.0	5%	-9.3	-42%
150406	Automation Engineer T		6.6	7.9	12.7	12.2	-4%	12.2	0%
430201	Fire Prevention and S	14.8	15.5	22.0	21.9	11.9	-46%	-2.9	-20%
470603	Autobody/Collision an	10.6	8.1	7.0	9.1	10.8	19%	0.2	2%
510805	Pharmacy Technician/A	19.1	12.2	10.1	11.9	10.8	-9%	-8.3	-44%
510904	Emergency Medical Tec	18.7	19.4	12.8	10.6	10.7	1%	-8.0	-43%
470201	Heating, Air Conditio	12.7	20.4	11.6	5.5	10.5	91%	-2.2	-17%
520401	Administrative Assist	12.5	12.6	9.3	10.4	10.5	1%	-2.0	-16%
290203	Signal/Geospatial Int			21.2	23.6	9.0	-62%	9.0	0%
510000	Health Services/Allied			3.4	6.9	7.7	11%	7.7	0%
490205	Truck and Bus Driver/	6.6	4.7	0.4	7.8	7.4	-5%	0.8	12%
510713	Medical Insurance Cod	7.0	6.2	6.3	7.7	5.7	-26%	-1.3	-19%
460503	Plumbing Technology/P	3.5	5.3	6.4	3.3	4.5	35%	1.0	30%
510716	Medical Administrativ	13.7	14.2	12.8	9.5	4.5	-52%	-9.2	-67%
460201	Carpentry/Carpenter	9.8	10.2	9.4	9.1	4.4	-52%	-5.4	-55%
470609	Avionics Maintenance					3.6	0%	3.6	0%
510710	Medical Office Assist	0.9	4.0	2.5	1.6	2.5	56%	1.6	187%
521909	Special Products Mark	1.6	1.5	1.6	1.6	2.0	23%	0.4	23%
10205	Agricultural Mechanic					1.9	0%	1.9	0%
511009	Phlebotomy Technician	1.9	3.4	2.4	1.0	1.8	86%	-0.1	-4%
111006	Computer Support Spec	1.2	1.6	0.3	0.5	1.5	200%	0.3	22%
090702	Digital Communication	5.4	5.4	2.6	1.6	0.8	-50%	-4.6	-85%
430203	Fire Science/Fire-fig	1.3	1.4	0.4	0.3	0.7	159%	-0.6	-45%
510708	Medical Transcription	4.3	2.3	3.9	2.7	0.7	-74%	-3.6	-84%
513501	Massage Therapy/Thera	9.4	6.4	4.6	4.8	0.6	-87%	-8.8	-94%
010103	Agricultural Economic	3.8	2.3	1.9	1.5	0.5	-67%	-3.3	-87%
510901	Cardiovascular Techno	5.5	5.9	5.5	5.7	0.4	-93%	-5.1	-93%
513103	Dietetic Technician					0.4	0%	0.4	0%
150613	Manufacturing Engineering	9.0			0.1	0.3	329%	-8.7	-97%
520204	Office Management and	0.3	0.1	1.0		0.3	0%	0.0	0%
513902	Nursing Assistant/Aid	0.4	0.8	0.1	1.0	0.1	-90%	-0.3	-75%
010301	Agricultural Production	5.3	7.1				0%	-5.3	-100%

CIP Code	Major/CIP Code Description	Fall 2011	Fall 2012	Fall 2013	Fall 2014	Fall 2015	% Change from 2014	5 Yr Difference	5 Yr Difference %
010304	Crop Production	2.7					0%	-2.7	-100%
090701	Radio and Television	0.4	2.6	0.9			0%	-0.4	-100%
150303	Electrical, Electroni	0.4	1.3	0.8			0%	-0.4	-100%
150702	Quality Control Techn	0.1					0%	-0.1	-100%
310507	Physical Fitness Tech		1.8	3.2	0.5		-100%	0.0	0%
439999	Homeland Security, La			1.0			0%	0.0	0%
480503	Machine Shop Technolo			0.2			0%	0.0	0%
490101	Aeronautics/Aviation/	1.6	10.3	6.2	0.5		-100%	-1.6	-100%
520203	Logistics, Materials,	0.2	0.1	0.1			0%	-0.2	-100%
520205	Operations Management	0.1					0%	-0.1	-100%
520207	Customer Service Mana	0.4	0.2		0.6		-100%	-0.4	-100%
520301	Accounting	0.2					0%	-0.2	-100%
	Unknown/Blank	104.1	121.4	53.7	43.8	46.7	7%	-57.4	-55%
Total		1,252.3	1,296.3	1,226.1	1,116.0	1,061.7	-5%	-190.6	-15%

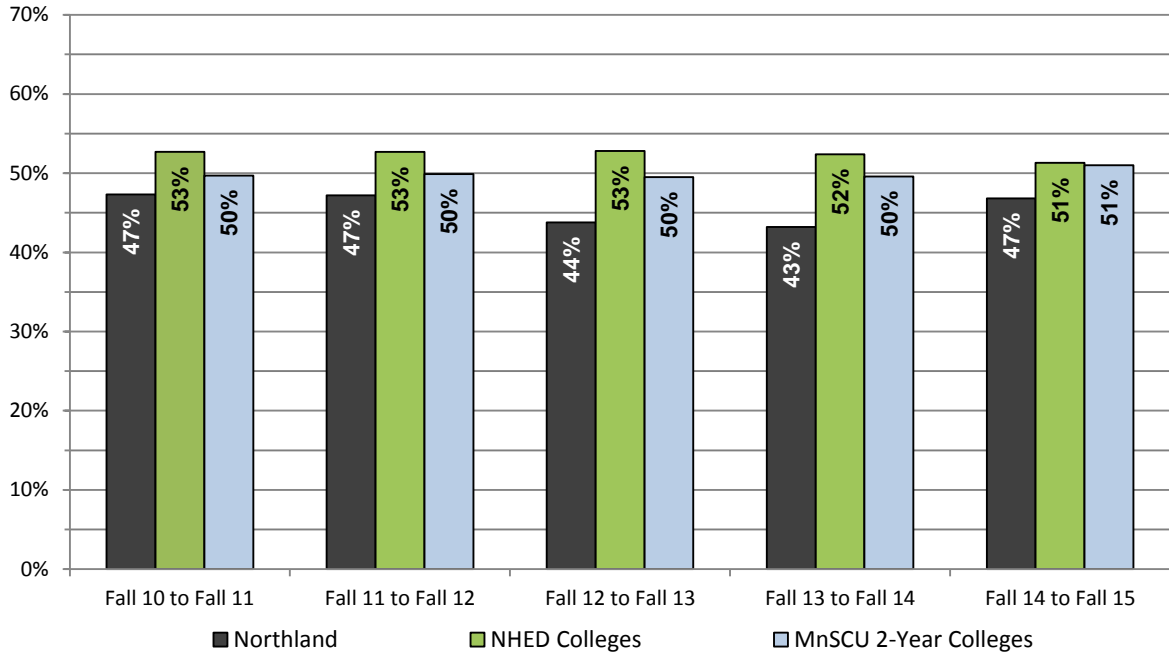
Source: 30th Day Enrollment Tables, ST_03/MnSCU ISRS Operational Data, 1.11.16

Table 25
On-line Enrollment

	Fiscal Year				
	2012	2013	2014	2015	2016
Sections Offered	331	302	273	298	288
FYE	535.8	504.5	529.3	493.9	470.8
Duplicated Headcount	6,342	5,940	6,136	5,701	5,612

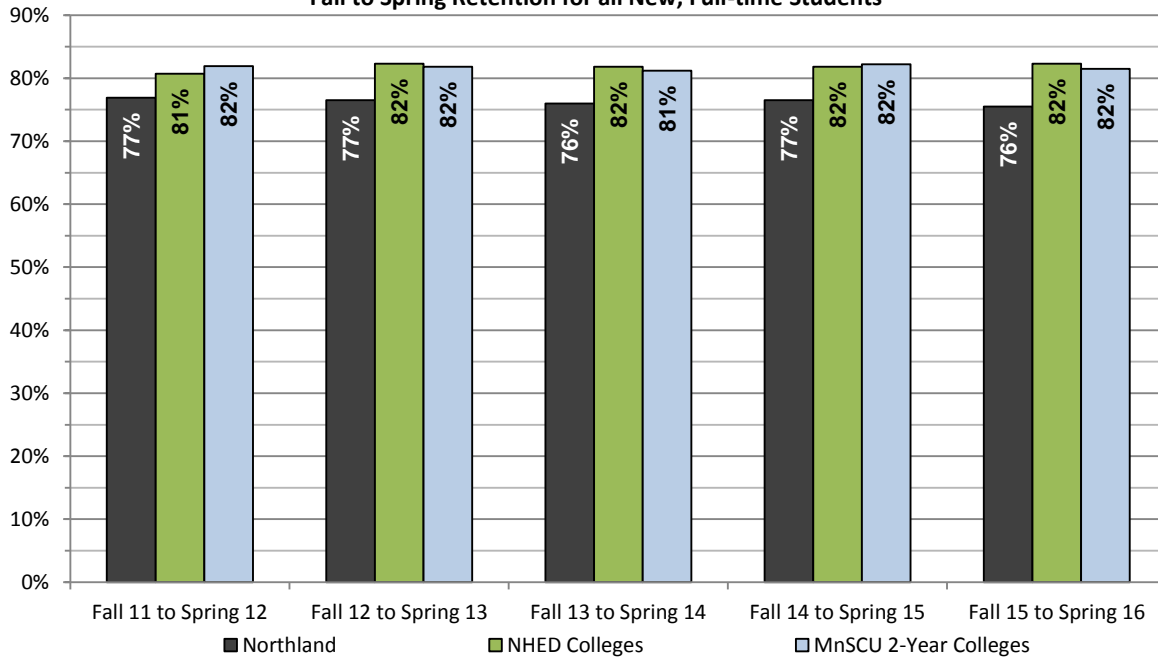
Source: MnSCU ISRS Operational Data, ST06 Student by Course/
Media Codes 03, 12, 13/9.12.16

Chart 14
Northland Community and Technical College
Fall to Following Fall Retention for all New, Full-time Students



NHED Colleges - Hibbing CC, Itasca CC, Mesabi Range, Rainy River CC and Vermilion CC
 Source: MnSCU ISRS Operational Data/Student Persistence Tables/all adm stat, new, full-time

Chart 15
Northland Community and Technical College
Fall to Spring Retention for all New, Full-time Students



NHED Colleges/Northeast Higher Education District - Hibbing CC, Itasca CC, Mesabi Range, Rainy River CC and Vermilion CC
 Source: MnSCU ISRS Operational Data/Student Persistence Tables/all adm stat, new, full-time
 Fall 15 to Spring 16 is Preliminary as of 7/28/16

Table 26
Enrollment by Program

	Fall 11		Fall 12		Fall 13		Fall 14		Fall 15	
	Count	Percent	Count	Percent	Count	Percent	Count	Percent	Count	Percent
Liberal Arts	670	17%	681	17%	728	19%	756	21%	656	19%
Occupational	2,518	64%	2,502	63%	2,641	70%	2,459	69%	2,416	69%
Undecided	724	19%	816	20%	384	10%	369	10%	419	12%
Total	3,912		3,999		3,753		3,584		3,491	

Source: 30th Day Enrollment Tables, ST_03/MnSCU ISRS Operational Data/CIP Code 240101, 240102, 1.14.16

Table 27
Degrees Awarded by Fiscal Year

	2012		2013		2014		2015		2016*	
	Count	Percent	Count	Percent	Count	Percent	Count	Percent	Count	Percent
AA	139	11%	160	12%	203	15%	200	20%	209	17%
AAS	341	27%	335	25%	313	23%	305	31%	306	25%
AS	119	9%	128	10%	121	9%	107	11%	131	11%
ATC/Certificate	433	34%	516	39%	546	40%	246	25%	402	33%
Diploma	250	19%	193	16%	196	14%	138	14%	161	13%
Total Degrees	1,282		1,332		1,379		996		1,209	
Total Students	1,126		1,167		1,230		864		1,096	

Source: Academic Awards by CIP/Major, updated 8.23.16

*FY16 preliminary as of 8.23.16

Chart 16
Degrees Awarded by Year

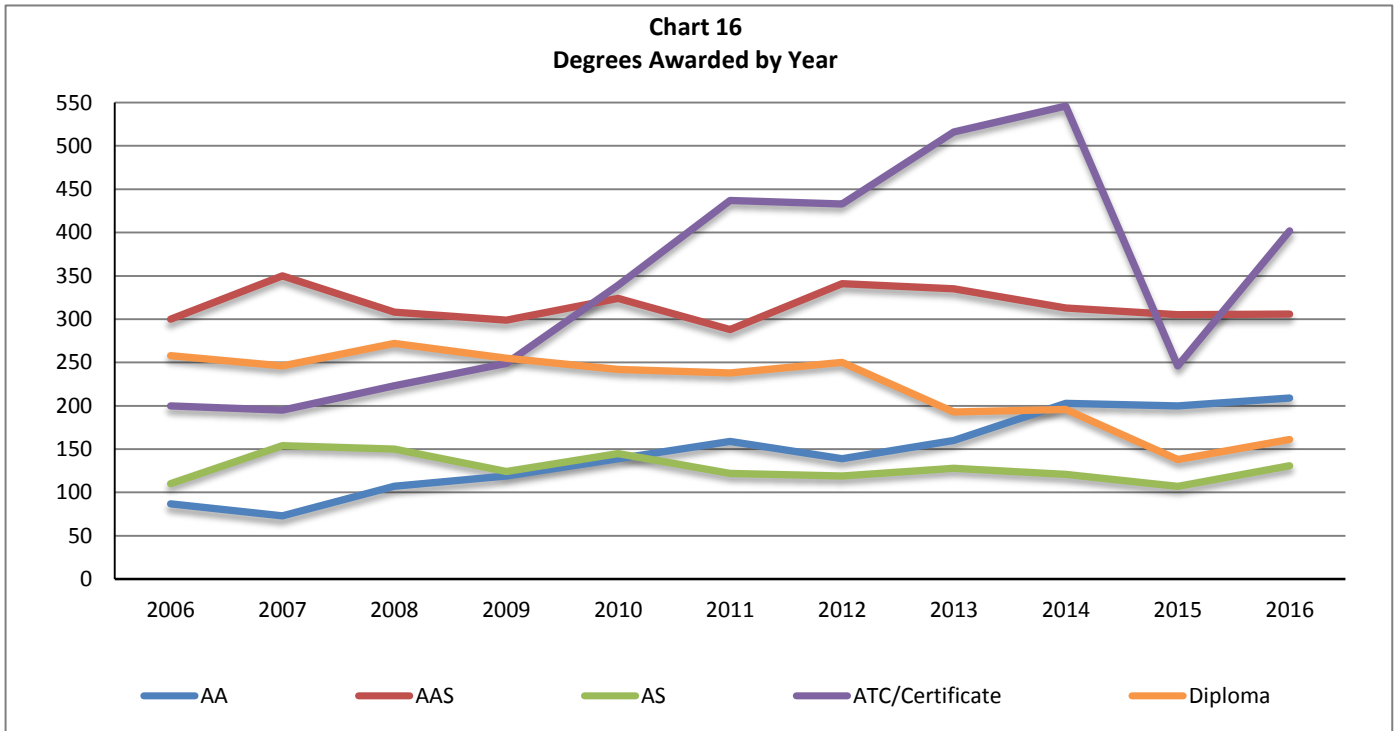


Table 28
Awards by Major - Fiscal Year

Degree	Major	2012	2013	2014	2015	2016*
		Count	Count	Count	Count	Count
AA	Liberal Arts and Sciences	139	160	204	200	209
AAS	Accounting/Associate Accounting	4	13	9	7	10
AAS	Administrative Assistant	10	12	7	4	6
AAS	Administrative Support Software Specialist	4	4	1		3
AAS	Architectural Technology and Design	5	3	9	10	9
AAS	Auto Body Collision Technology	2	1	2	1	
AAS	Automotive Service Technology	10	7	2	2	3
AAS	Aviation Maintenance Technology	7	8	11	7	16
AAS	Cardiovascular Technology--Invasive	4	4	1	6	1
AAS	Computer and Network Technology	12	7	13	11	6
AAS	Digital Media Production					1
AAS	Electronics Technology/Automated Systems	9	11	4	12	11
AAS	Fire Technology	10	7	13	14	5
AAS	Firefighter/Intensive Care Paramedic	13	15	7	8	7
AAS	Geospatial Intelligence Analysis				21	16
AAS	Heating, Ventilation and Air Conditioning/Control	1	1	2		1
AAS	Medical Administrative Assistant	14	12	11	9	5
AAS	New Media Production	2	3	2		1
AAS	Occupational Therapy Assistant	16	15	11	12	17
AAS	Pharmacy Technology	13	10	14	8	13
AAS	Physical Therapist Assistant	14	14	17	13	15
AAS	Practical Nursing	106	116	114	97	103
AAS	Radiologic Technology	16	15	14	13	11
AAS	Respiratory Therapist	23	14	12	6	11
AAS	Sales, Marketing, and Management	25	20	21	28	20
AAS	Surgical Technology	21	23	16	16	15
AS	Business	3	11	13	6	15
AS	Criminal Justice - Law Enforcement	25	24	17	14	20
AS	Early Childhood and Paraprofessional Education	13	8	9	9	13
AS	Electronic Technology Marketing	1	1			
AS	Health Sciences Broad Field					2
AS	Manufacturing Technology		2			2
AS	Nursing	77	82	82	78	79
ATC	Advanced Farm Business Management	12	6	4		3
CERT	Advanced Agricultural Commodity Marketing	24	2	6		
CERT	Advanced Rescue			8	9	2
CERT	Applications in Farm Business Management		16	20	1	8
CERT	Architectural Technology and Design	8	12	10		
CERT	Automotive Electronics and Drivability	5	11	6	6	7
CERT	Automotive Engine Repair, Suspension and Brakes	1	19	3	16	9
CERT	Aviation Maintenance Technician Plus					1
CERT	Cisco Networking	13	8	12	14	7
CERT	Collision and Refinishing/Sheet Metal Technician				20	15
CERT	Commercial Vehicle Operator	23	13	13	19	17
CERT	Criminal Justice - Law Enforcement	1	1	3		2
CERT	Current Issues in Farm Business Management	110	134	163		176
CERT	Customer Service	3	4	1	5	4
CERT	Electronic Technology Marketing I	18	17	8	23	15
CERT	Electronic Technology Marketing II	8	6	11	6	5
CERT	Essentials of Farm Business Management		40	72	2	12
CERT	Fire Service Preparation	8	16	13	7	4
CERT	Health and Fitness Specialist		1	1	2	
CERT	Imagery Analysis			35	23	2
CERT	Lean Manufacturing/Continuous Improvement	2		1		

Degree	Major	2012	2013	2014	2015	2016*
		Count	Count	Count	Count	Count
CERT	Medical Coding Specialist	38	28	12	18	15
CERT	Medical Transcription	4				
CERT	New Media Production		1			
CERT	Nursing Assistant	136	138	112	58	72
CERT	Patient Access Specialist					3
CERT	Phlebotomy	3	6	5	2	7
CERT	Rescue Technician	1	9	3	3	
CERT	Supervisory Leadership	1	3	2	4	4
CERT	Unmanned Aerial Systems Maintenance Tech	3	13	17	6	4
CERT	Welding Process Technology	11	12	5	2	8
DIP	Accounting Clerk	2	2	5	2	6
DIP	Administrative Support	11	12	12	5	7
DIP	Administrative Support Microcomputer Speci					1
DIP	Architectural Technology and Design	6	10	10	5	8
DIP	Auto Body Collision Technology	4	4	5	3	
DIP	Automotive Service Technology	4	8	10	3	6
DIP	Aviation Maintenance Technology	13	18	12	10	11
DIP	Carpentry-Residential	12	9	11	12	6
DIP	Construction Electricity	15	14	20	13	15
DIP	Construction Plumbing	1	3	11	9	9
DIP	Criminal Justice - Law Enforcement		3	5	1	1
DIP	Electronic Technology Marketing	2	4	1		7
DIP	Farm Business Management	46				
DIP	Farm Operations and Management	12	13	13	12	11
DIP	Fire Protection Technician	10				
DIP	Fire Suppression Technician	7				
DIP	Heating, Ventilation and Air Conditioning	3	27	13	8	12
DIP	Intro Architectural Technology & Design				17	8
DIP	Massage Therapist	12	5	7	8	1
DIP	Medical Office Specialist		14	14	11	9
DIP	Medical Secretary Technology	11				
DIP	Medical Transcriptionist/Editor	18	9	7	2	1
DIP	New Media Production	2				1
DIP	Pharmacy Technology		3	2		2
DIP	Plumbing Technology	5	1			
DIP	Practical Nursing	44	15	14	7	20
DIP	Radio Business	1	1	1		1
DIP	Specialty Crops Management	1				
DIP	Welding Process Technology	2	4	9	1	1
DIP	Welding Technology	6	14	13	9	17
Total Awards		1282	1332	1379	996	1209

Source: Academic Awards by CIP/Major, updated 8.23.16

*FY16 preliminary as of 8.23.16

**Table 29
Persistence and Completion Rates for New, Fall, Full-Time Students
Fall 2011**

	Fall 2011 Entering Cohort	Fall to Spring			Fall to Fall			2-Year		3-Year	
		First Spring Retention Rate	First Spring Success Rate	Second Fall Retention Rate	Second Fall Success Rate	Third Fall Retention Rate	Third Fall Success Rate	Three Year Grad Rate	Fourth Fall Retention Rate	Fourth Fall Success Rate	
Gender											
Female	312.	74%	84%	48%	70%	23%	64%	42%	10%	66%	
Male	391.	76%	82%	45%	64%	13%	62%	42%	6%	63%	
Race/Ethnicity											
American Indian or Alaska Native	19.	63%	74%	47%	63%	5%	47%	47%	0%	53%	
Black or African American	46.	74%	80%	41%	65%	15%	61%	20%	9%	65%	
Hispanic of any race	39.	72%	79%	41%	51%	26%	54%	31%	8%	49%	
Two or more races	37.	73%	86%	46%	62%	14%	49%	32%	5%	51%	
White	553.	76%	84%	47%	69%	18%	65%	45%	8%	67%	
Age Group											
*Non-traditional Age	115.	74%	85%	36%	61%	11%	63%	48%	3%	59%	
*Traditional Age	589.	76%	83%	48%	68%	19%	63%	41%	8%	66%	
Underrepresented**											
Not	200.	75%	84%	52%	76%	22%	72%	50%	7%	72%	
Underrepresented	437.	76%	83%	44%	62%	17%	58%	38%	7%	59%	
Unknown	67.	72%	82%	42%	75%	12%	72%	46%	10%	78%	
Admission Status											
High School	8.	88%	88%	38%	88%	13%	75%	38%	13%	88%	
Undergraduate Other	54.	59%	69%	33%	56%	24%	61%	26%	9%	57%	
Undergraduate Regular	417.	77%	84%	46%	64%	16%	57%	38%	8%	59%	
Undergraduate Transfer	225.	75%	85%	50%	76%	19%	75%	54%	6%	75%	
Total	704.	75%	83%	46%	67%	18%	63%	42%	8%	65%	

Success rate is the retention, transfer, and graduation combined; measure at beginning of term.
 *Private data cell sizes less than 5 not reported. Racial/ethnic status for such reported in aggregate.
 **Underrepresented - Student of color, Pell eligible, or first generation (MN defined - neither parent has any post secondary education).
 Source: MnSCU ISRS Operational Data; Student Persistence Tables; Fall Cohort, New, Full-time Students; Undergrad Regular, Transfer, Other and High School

**Table 30
Persistence and Completion Rates for New, Fall, Full-Time Students
Fall 2012**

	Fall 2010 Entering Cohort	Fall to Spring			Fall to Fall			2-Year			3-Year		
		First Spring Retention Rate	First Spring Success Rate	Second Fall Retention Rate	Second Fall Success Rate	Third Fall Retention Rate	Third Fall Success Rate	Third Fall Retention Rate	Third Fall Success Rate	Three Year Grad Rate	Fourth Fall Retention Rate	Fourth Fall Success Rate	
Gender													
Female	364.	74%	81%	46%	69%	23%	65%	43%	10%	65%			
Male	426.	79%	84%	42%	65%	12%	61%	42%	5%	62%			
Race/Ethnicity													
American Indian or Alaska Native	17.	65%	71%	24%	29%	12%	35%	29%	0%	35%			
Asian	11.	91%	100%	55%	64%	45%	64%	18%	27%	45%			
Black or African American	40.	85%	90%	43%	68%	15%	65%	15%	8%	65%			
Hispanic of any race	33.	91%	94%	45%	76%	12%	67%	42%	3%	67%			
Two or more races	27.	67%	67%	37%	56%	7%	41%	33%	0%	41%			
Unknown	4.	75%	100%	50%	75%	0%	75%	75%	0%	75%			
White	649.	75%	82%	44%	67%	18%	64%	45%	7%	65%			
Age Group													
* Non-traditional Age	115.	79%	87%	47%	73%	20%	70%	55%	9%	69%			
* Traditional Age	670.	76%	82%	43%	66%	17%	62%	40%	7%	62%			
55 or Greater	5.	60%	80%	20%	60%	0%	60%	60%	0%	60%			
Underrepresented**													
Not	228.	79%	86%	54%	77%	20%	75%	56%	7%	73%			
Underrepresented	480.	75%	81%	39%	61%	17%	56%	35%	7%	57%			
Unknown	82.	80%	84%	45%	72%	11%	72%	50%	5%	73%			
Admission Status													
High School	13.	77%	77%	46%	85%	0%	77%	46%	0%	77%			
Undergraduate Other	49.	78%	80%	41%	61%	18%	61%	29%	6%	57%			
Undergraduate Regular	464.	75%	80%	41%	61%	18%	57%	37%	7%	57%			
Undergraduate Transfer	264.	80%	88%	50%	77%	17%	74%	55%	8%	75%			
Total	790.	76%	83%	44%	67%	17%	63%	42%	7%	63%			

Success rate is the retention, transfer, and graduation combined; measure at beginning of term.

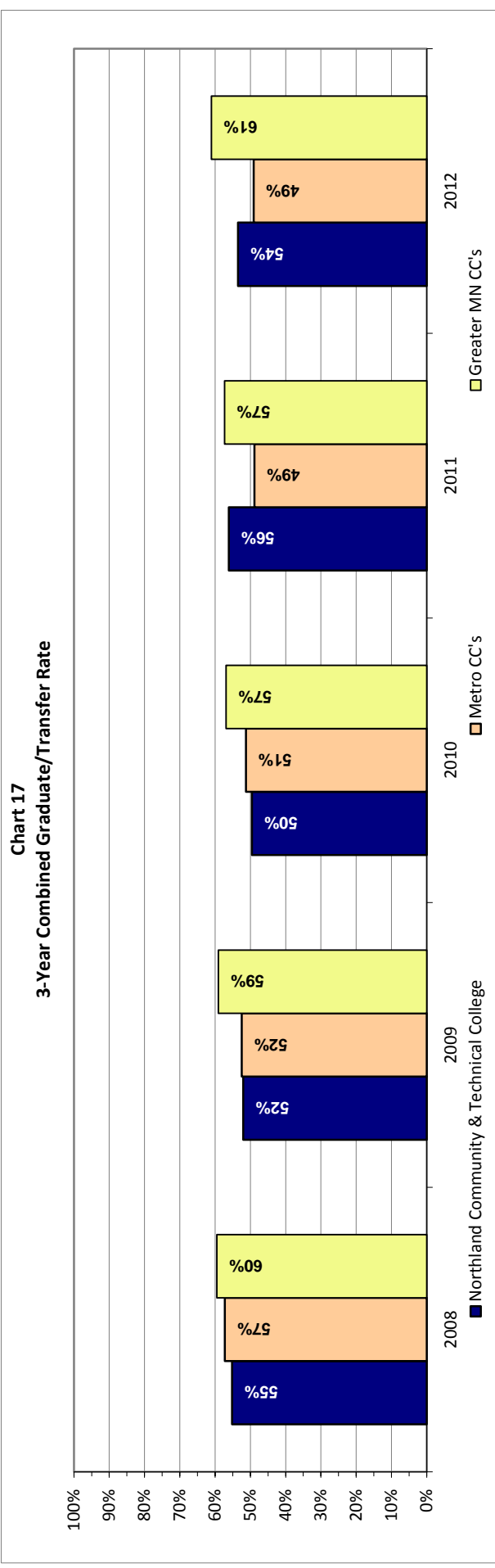
*Private data cell sizes less than 5 not reported. Racial/ethnic status for such reporting in aggregate.

**Underrepresented - Student of color, Pell eligible, or first generation (MN defined - neither parent has any post secondary education).

Source: MnSCU ISRS Operational Data; Student Persistence Tables; Fall Cohort, New, Full-time Students; Undergrad Regular, Transfer, Other and High School

Table 31
 IPEDS 3-Year Graduation and Transfer-out Rates
 Fall 2008, Fall 2009, Fall 2010, Fall 2011 and Fall 2012 First-time, Full-time, Degree Seeking Students

COLLEGE	Cohort				Graduation Rate				Transfer Rate				Combined Grad/Trans Rate			
	2008	2009	2010	2011	2012	2008	2009	2010	2011	2012	2008	2009	2010	2011	2012	
Cohort	426	527	456	417	467	30%	29%	28%	35%	37%	26%	23%	21%	21%	16%	
Northland Community & Technical College																
Metro CC's	3,691	3,836	3,560	2,808	2,662	17%	17%	14%	19%	20%	40%	35%	37%	30%	29%	
Metro CTC's	2,689	3,101	2,583	2,549	2,406	15%	17%	15%	15%	16%	28%	24%	24%	23%	21%	
Metro TC's	1,189	1,326	1,020	894	955	30%	28%	31%	28%	30%	17%	17%	14%	15%	15%	
Greater MN CC's	699	833	798	773	695	31%	29%	29%	28%	32%	28%	30%	28%	29%	29%	
Greater MN CTC's	6,535	7,004	7,518	6,715	6,298	33%	33%	33%	34%	37%	23%	19%	19%	19%	17%	
Greater MN TC's	1,787	2,078	546	414	412	40%	38%	28%	31%	26%	24%	20%	17%	12%	18%	
Total Colleges	16,590	18,178	16,025	14,153	13,428	27%	27%	27%	25%	27%	28%	24%	24%	22%	21%	



Source: MnSCU System Office Research
 Note: Starting with 2010 cohort St Cloud Technical and Community College moved from Greater MN TC to Greater MN CTC comparison group
 Note: Starting with 2010 cohort Alexandria Technical and Community College moved from Greater MN TC to Greater MN CTC comparison group

This page intentionally left blank.

Faculty and Staff

Employee Headcount, FTE, and Diversity Measures
Northland Community and Technical College
Fiscal Years 2012-2014

Table 32
Employee Headcount

Employee Role	2012	2013	2014	Change	% Change
Instructional Faculty	191	230	254	63	33.0%
Service and Support	63	60	58	-5	-7.9%
Professionals	39	43	41	2	5.1%
Managers and Supervisors	10	11	11	1	10.0%
Administrators	14	11	11	-3	-21.4%
Total	317	355	375	58	18.3%

Table 33
Employee Full-Time Equivalent (FTE)

Employee Role	2012	2013	2014	Change	% Change
Instructional Faculty	159.0	164.0	161.0	2	1.3%
Service and Support	52.0	50.2	48.7	-3.3	-6.3%
Professionals	36.2	41.3	40.0	3.8	10.5%
Managers and Supervisors	10.3	10.2	10.7	0.4	3.9%
Administrators	13.3	11.3	10.9	-2.4	-18.0%
Total	270.8	277	271.3	0.5	0.2%

Table 34
Employee Diversity (Headcount)

Employee Role	2012	2013	2014	Change	% Change
Percent Employees of Color	3.8%	5.6%	5.9%	2.1%	
Number Employees of Color	12	20	22	10	83.3%
Percent Faculty of Color	2.1%	3.9%	4.7%	2.6%	
Number Faculty of Color	4	9	12	8	200.0%
Percent All Other Employees of Color	6.3%	8.8%	8.3%	2.0%	
Number All Other Employees of Color	8	11	10	2	25.0%

Source: Northland Community and Technical College HR Office / System Office of Human Resources

This page intentionally left blank.

Regional Population and Employment

Table 35
Population Estimates for Region 1 Counties and State

	2011	2012	2013	2014	2015	2010-2015 % Change	2005 - 2015 % Change
Kittson County	4,528	4,496	4,498	4,440	4,422	-3%	-8%
Marshall County	9,473	9,445	9,424	9,420	9,417	0%	-5%
Norman County	6,859	6,656	6,634	6,643	6,666	-3%	-6%
Pennington County	14,018	14,075	14,121	14,119	14,206	2%	4%
Polk County	31,489	31,429	31,569	31,545	31,529	0%	2%
Red Lake County	4,105	4,086	4,071	4,048	4,039	-1%	-6%
Roseau County	15,536	15,484	15,522	15,663	15,771	1%	-4%
Region 1	86,008	85,671	85,839	85,878	86,050	0%	-1%
Minnesota	5,344,861	5,379,139	5,420,380	5,453,218	5,485,238	1%	5%

Source: Minnesota State Demographic Center and the Metropolitan Council/9.5.16

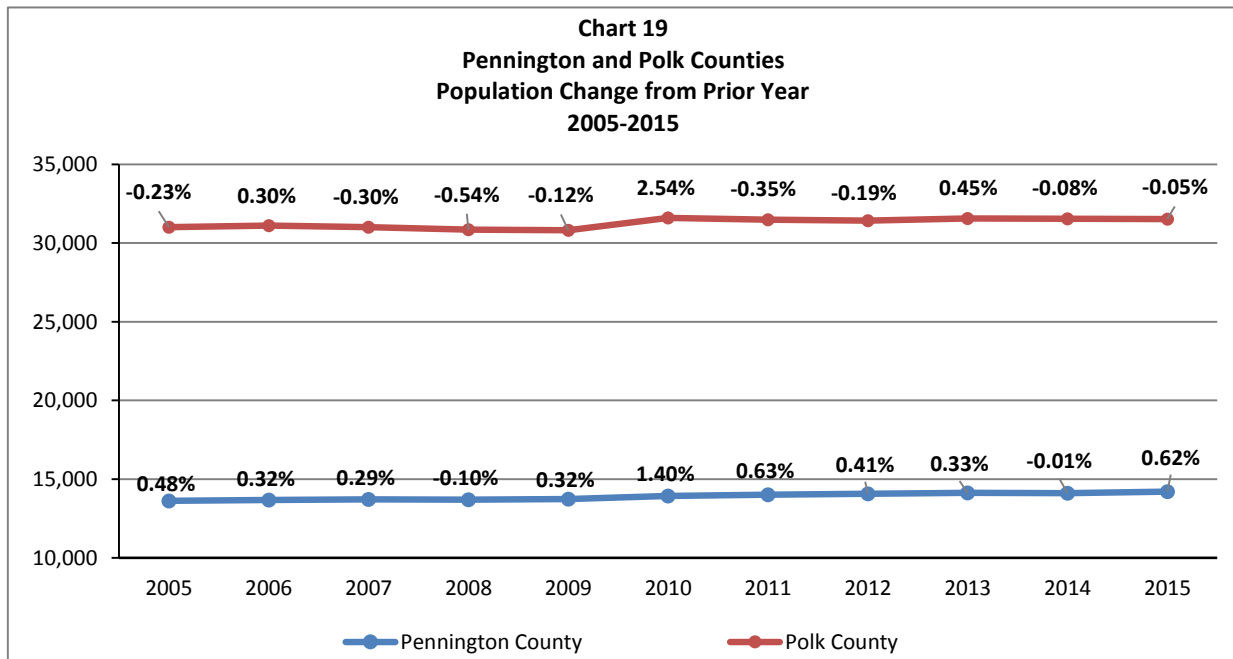
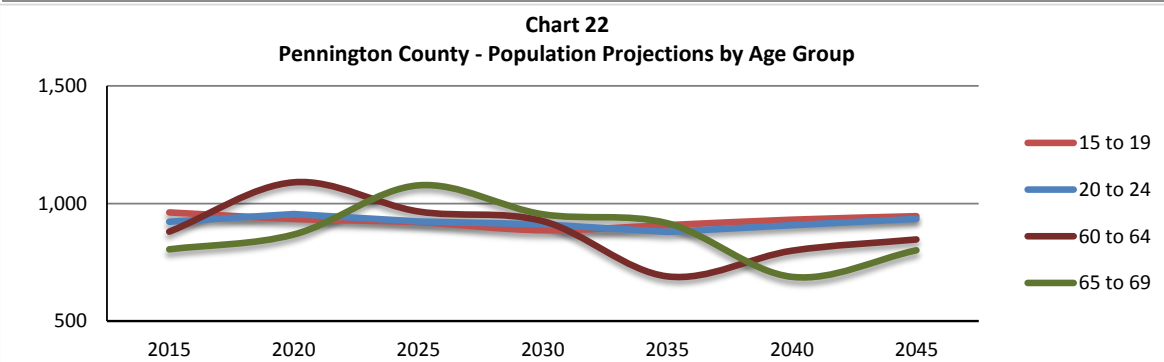
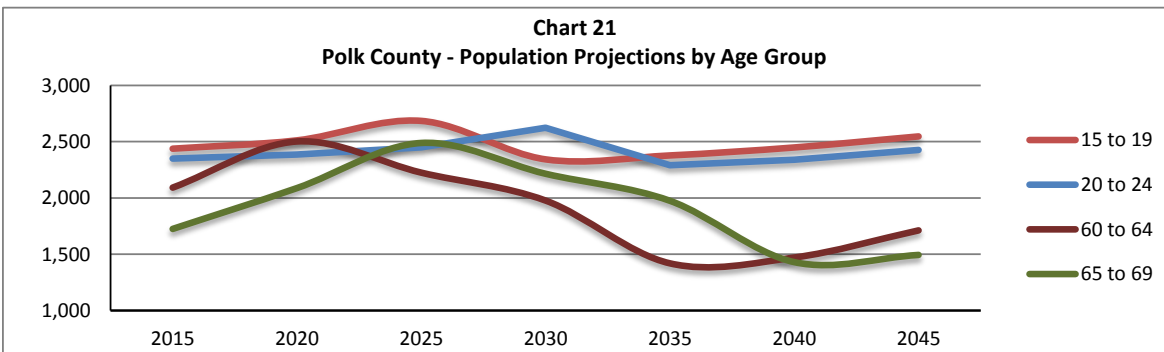
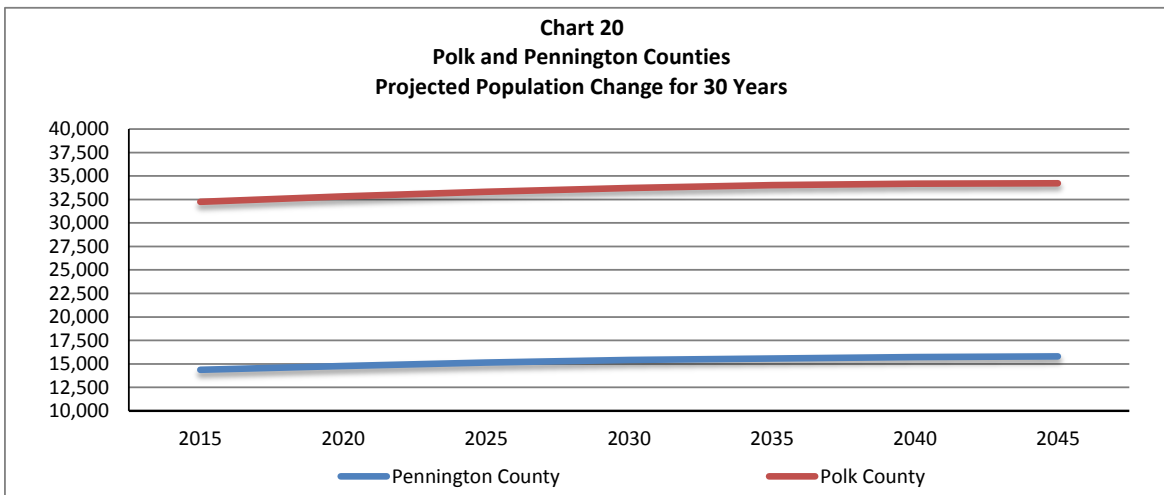


Table 36
Projected 30 Year Population Change for County, Region, and State

County	2015	2020	2025	2030	2035	2040	2045	2015 - 2025 % Change	2015 - 2045 % Change
Kittson County	4,597	4,621	4,654	4,659	4,622	4,537	4,455	1.2%	-3.1%
Marshall County	9,592	9,718	9,838	9,920	9,937	9,893	9,866	2.6%	2.9%
Norman County	7,011	7,091	7,183	7,259	7,307	7,307	7,272	2.5%	3.7%
Pennington County	14,372	14,764	15,153	15,415	15,580	15,715	15,799	5.4%	9.9%
Polk County	32,252	32,844	33,317	33,725	34,024	34,191	34,229	3.3%	6.1%
Red Lake County	4,216	4,312	4,393	4,435	4,435	4,445	4,445	4.2%	5.4%
Roseau County	16,279	16,703	17,221	17,771	18,073	18,260	18,449	5.8%	13.3%
Region 1	88,319	90,053	91,759	93,184	93,978	94,348	94,515	3.9%	7.0%
Minnesota	5,497,933	5,677,582	5,841,619	5,982,601	6,093,729	6,175,801	6,234,930	6.3%	13.4%

Source: MN Dept. of Administration/Office of Geographic Demographic Analysis/State Demographic Center March 2014
 *Most recent data available as of 1.30.15



Source: MN State Demographic Center, March 2014/MN County Population Projections by Age and Gender, 2015-2045

Table 37
High School Enrollment for Area Districts

	11-12	12-13	13-14	14-15	15-16
Ninth	515	566	595	536	546
Tenth	568	532	567	587	539
Eleventh	562	548	508	559	586
Twelfth	510	539	529	468	564
Total	2,155	2,185	2,200	2,150	2,235

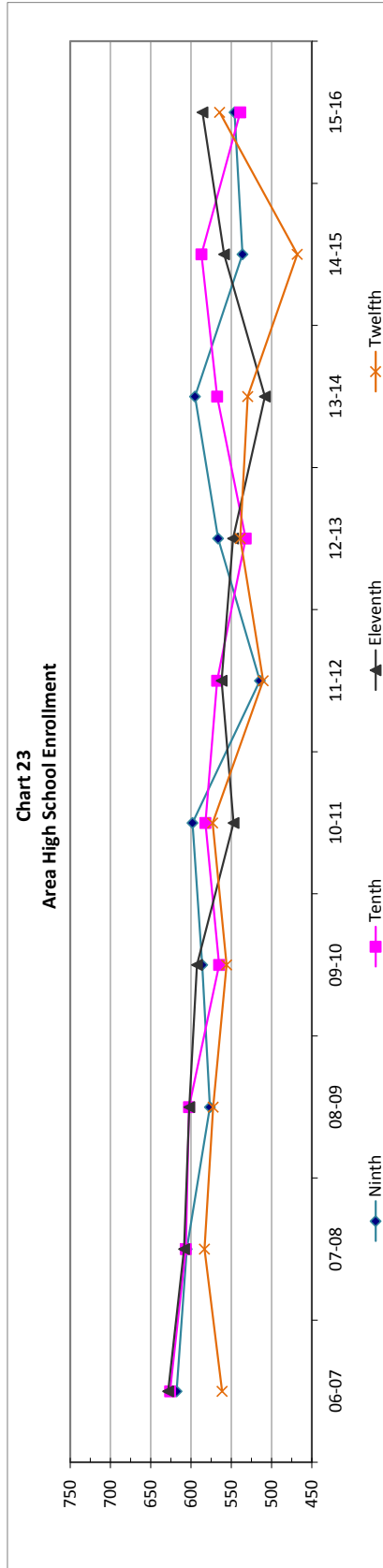


Table 38
2015-2016* Enrollment for Area School Districts (K-12)

	ISD #441 Marshall County Central Schools	ISD #561 Goodridge Public School District	ISD #564 TRF School District	ISD #593 Crookston Public School District	ISD #595 EGF Public Schools	ISD #600 Fisher Public School District	ISD #630 Red Lake Falls Public School District	ISD #2176 Warren- Alvarado-Olso School District	ISD #2683 Greenbush Middle-River	Total
Kinder	22	15	146	88	151	21	32	38	30	543
1	34	21	144	87	162	21	28	32	24	553
2	32	22	153	103	157	22	31	33	30	583
3	21	12	154	91	152	21	21	45	20	537
4	33	15	143	85	132	14	21	38	30	511
5	28	21	150	106	132	17	29	42	35	560
6	28	10	160	103	135	21	31	32	32	552
7	37	16	152	90	146	16	32	31	37	557
8	28	15	132	97	140	19	29	32	38	530
9	28	10	160	103	144	16	24	30	31	546
10	31	9	146	105	135	17	30	33	33	539
11	35	20	189	106	123	26	27	24	36	586
12	30	9	158	94	151	23	25	33	41	564
Total	387	195	1,987	1,258	1,860	254	360	443	417	7,161

Source: Minnesota Department of Education, Data Reports and Analytics, Student, Enrollment by Ethnicity/Gender
*Preliminary as of 9.6.16

Table 39
Average Unemployment Rate

	Pennington County	Polk County	Economic Development Region 1	Minnesota	United States
2007	6.9%	4.6%	6.0%	4.6%	4.6%
2008	7.1%	5.0%	5.9%	5.4%	5.8%
2009	8.8%	5.9%	7.5%	7.8%	9.3%
2010	9.0%	6.6%	7.5%	7.4%	9.6%
2011	7.7%	7.0%	7.0%	6.5%	8.9%
2012	6.6%	6.2%	6.2%	5.6%	8.1%
2013	6.3%	5.3%	5.7%	4.9%	7.4%
2014	5.1%	4.6%	4.9%	4.2%	6.2%
2015	5.2%	4.2%	4.8%	3.7%	5.3%
2016	4.3%	4.6%	4.7%	3.7%	5.1%

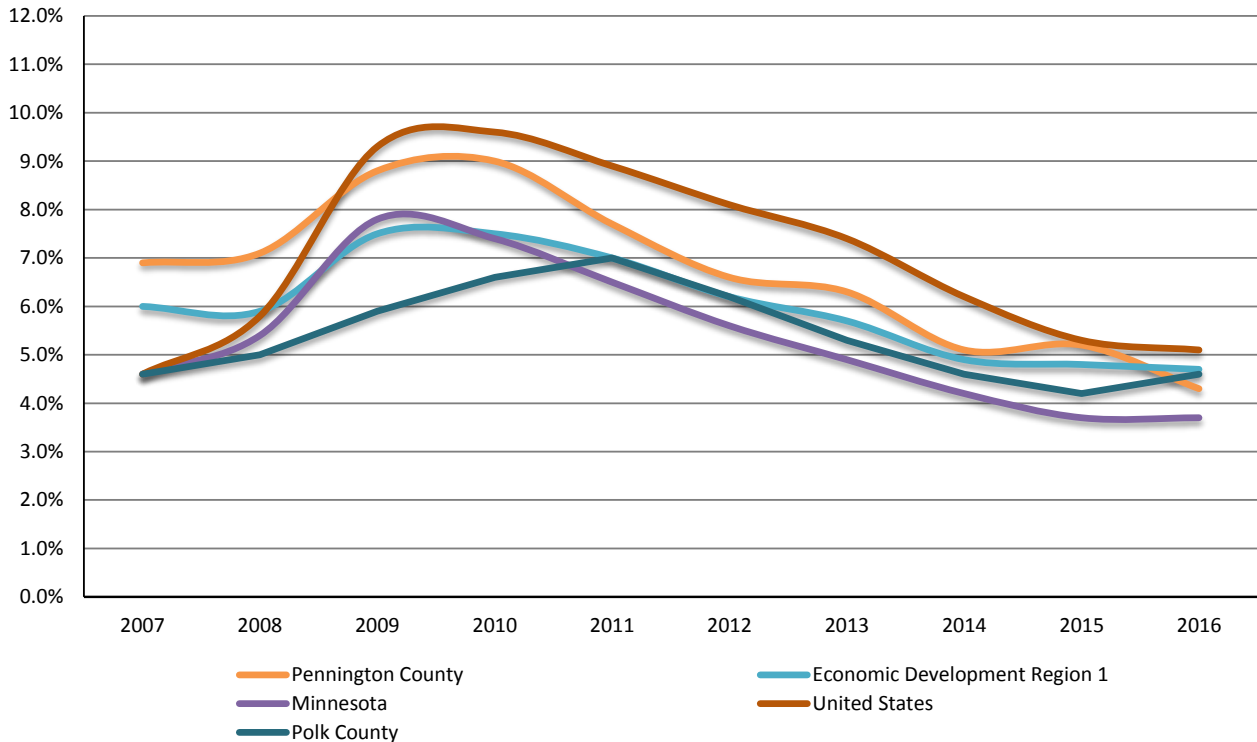
Source: Minnesota Department of Employment and Economic Development/Local Area Unemployment Statistics/MN Counties/Pennington and Polk Counties/Historical Data, Annual Unemployment Rate, 2002-2016, not seasonally adjusted

Unemployed includes those not employed but available for work and actively looking during the last four weeks; those waiting to be called back to a job from which they were laid off; or persons waiting to report to a new wage or salaried job.

Unemployment rate determined by dividing the total number unemployed by the total labor force (sum of employed and unemployed people).

*July 2016

Chart 24
Unemployment Rates



Northland Community and Technical College
Community College Survey of Student Engagement (CCSSE) and
Survey of Entering Student Engagement (SENSE) Summary

Review of 2016 **CCSSE** Results

Benchmark	2012	2014	2016
Active and Collaborative Learning	45.0	51.0	48.6
Student Effort	42.8	43.8	44.0
Academic Challenge	42.6	47.9	48.1
Student-Faculty Interaction	46.7	49.3	50.4
Support for Learners	48.4	47.3	48.9

Aspects of Highest Student Engagement - 2016

	NCTC	Cohort
Worked with other students on projects during class	56.4%	50.8%
Worked with classmates outside of class to prepare class assignments	29.1%	24.4%
Using information you have read or heard to perform a new skill	71.9%	65.6%
Mark the box that best represents the extent to which your examinations during the current school year have challenged you to do your best work	71.2%	66.0%
Providing the support you need to help you succeed at this college	81.7%	74.9%

Aspects of Lowest Student Engagement - 2016

	NCTC	Cohort
Prepared two or more drafts of a paper or assignment before turning it in	38.2%	51.1%
Participated in a community-based project as a part of a regular course	4.8%	8.0%
Number of books read on your own (not assigned) for personal enjoyment or academic enrichment 5 or more	15.5%	21.8%
Number of written papers or reports of any length	46.0%	59.7%
Frequency: Career counseling	24.6%	29.9%

Review of 2016 **SENSE** Results

Benchmark	2012	2014	2016
Early Connections	58.3	53.1	56.9
High Expectations and Aspirations	47.3	49.3	46
Clear Academic Plan and Pathway	58.1	59.1	58.7
Effective Track to College Readiness	51.2	50.5	49
Engaged Learning	45.8	47.9	48.6
Academic and Social Support Network	49.2	47.4	48.9

SENSE 2016 Highest Aspects

	NCTC	Cohort
Able to meet with an academic advisor at times convenient for me	79.2%	65.2%
An advisor helped me to select a course of study, program, or major	80.5%	63.6%
Advisory helped me to identify the courses I needed to take during my first semester	88.7%	73.6%
A college staff member helped me determine whether I qualified for financial assistance	51.0%	37.5%
Worked with classmates outside of class on class projects or assignments	42.0%	36.7%

SENSE 2016 Lowest Aspects

	NCTC	Cohort
Came to class without completing readings or assignments	46.5%	56.7%
Used an electronic tool to communicate with another student about coursework	56.8%	60.2%
Used an electronic tool to communicate with an instructor about coursework	60.3%	68.9%
Skipped class	66.6%	75.3%
Used writing, math, or other skill lab	15.0%	35.0%

Source: Northland Community and Technical College

This page intentionally left blank.